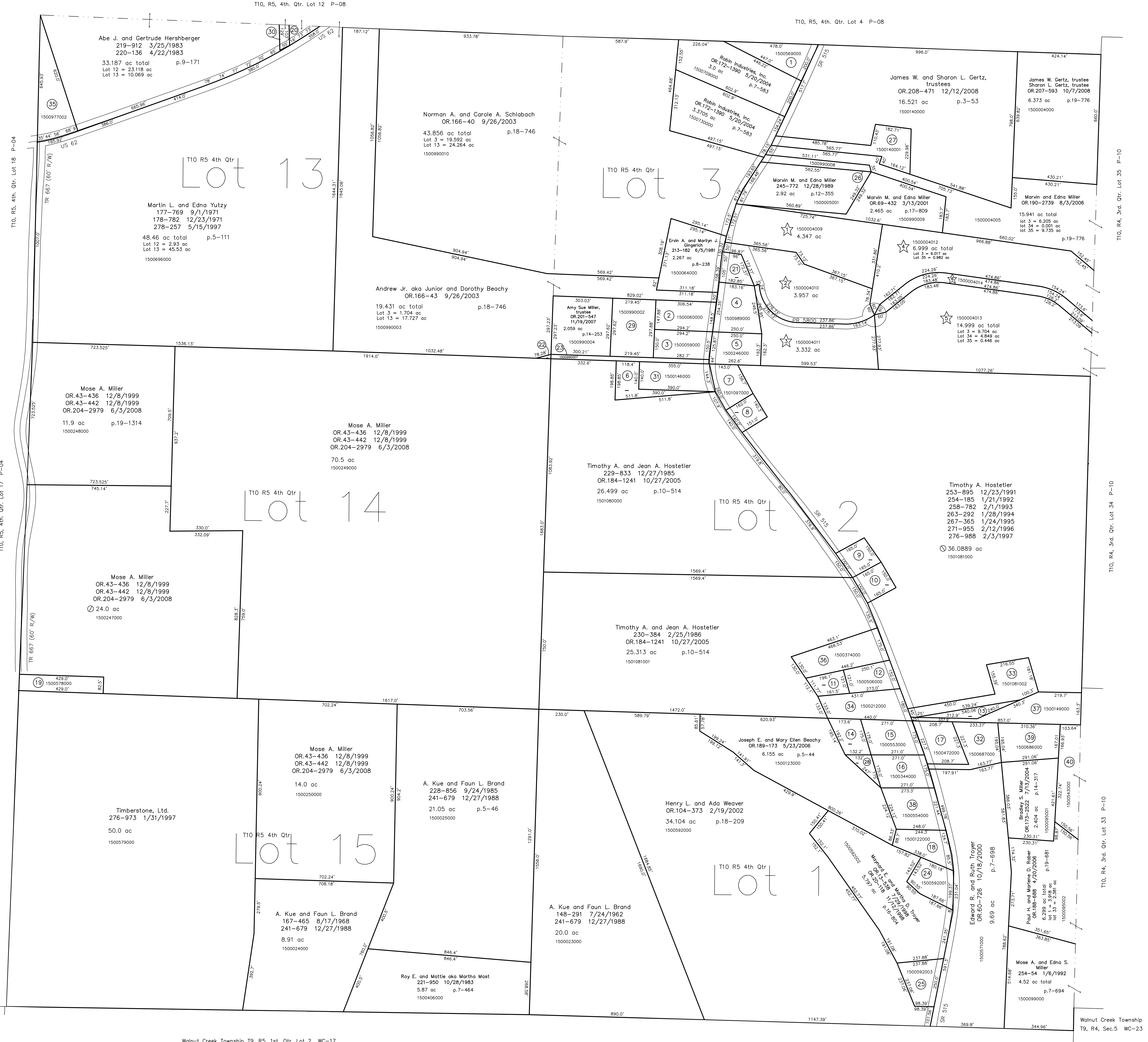
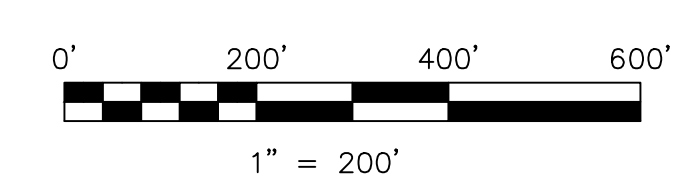


- 1500569000 ① Delores J. Troyer, trustee
OR.83-863 12/12/2000
1.026 ac p.2-112
- 1500600000 ② Richard and Dorothy Gerber
185-774 12/14/1973
1.02 ac p.7-174
- 1500599000 ③ Richard N. and Dorothy Gerber
151-57 8/28/1983
158-121 3/18/1986
1.0 ac p.4-5
- 1500989000 ④ Abe A. and Doris M. Miller
221-38 7/21/1983
OR.206-1754 6/29/2008
1.23 ac p.10-192
- 1500246000 ⑤ Mose A. Miller
OR.43-436 12/8/1999
OR.43-442 12/8/1999
OR.204-2979 6/3/2008
1.005 ac p.7-760
- 1500147000 ⑥ Timothy A. and Jean A. Hostetter
213-40 5/20/1991
OR.184-1241 10/27/2005
0.7241 ac p.8-743
- 1501097000 ⑦ Loren and Mary Hostetter
127-486 2/2/1983
150-572 3/18/1955
0.77 ac
- 1500145000 ⑧ Mary Hostetter
143-120 5/7/1960
0.5 ac p.3-80
- 1500144000 ⑨ Timothy A. Hostetter
OR.190-2697 8/3/2006
OR.190-2699 8/3/2006
0.58 ac
- 1500135000 ⑩ Timothy A. Hostetter
OR.190-2694 8/3/2006
0.57 ac
- 1500211000 ⑪ John E. and Ruth Ann Ware, co-trustees
OR.205-318 6/6/2008
0.455 ac p.8-143
- 1500506000 ⑫ Stanley and Roberta Sommers
148-89 5/28/1962
OR.189-503 12/30/2003
0.8 ac
- 1500150000 ⑬ Elmer J. and Shirley M. Rober
241-334 11/22/1988
0.364 ac p.8-142
- 1500552000 ⑭ June I. Troyer
150-58 4/4/1963
209-571 5/29/1980
0.58 ac p.3-868
- 1500553000 ⑮ June Troyer
127-136 8/28/1952
209-571 5/29/1980
0.58 ac
- 1500344000 ⑯ Malcolm D. and Sandra L. Miller
197-829 5/6/1977
0.9 ac p.3-5
- 1500472000 ⑰ Johnny Schneider
OR.186-604 4/17/2007
OR.186-606 4/17/2007
1.0 ac
- 1500122000 ⑱ Joseph E. and Mary Ellen Beachy
OR.189-173 5/23/2006
0.905 ac
- 1500578000 ⑲ Timberstone, Ltd.
276-973 1/31/1997
1.0 ac
- 1500997000 ⑳ Amy Sue Miller, trustee
OR.201-547 11/19/2007
0.122 ac
- 1500990001 ㉑ Abe A. and Doris M. Miller
245-593 12/8/1989
0.492 ac p.12-345
- 1500990006 ㉒ Mose A. Miller
OR.43-440 12/8/1999
OR.204-2979 6/3/2008
0.019 ac p.14-473
- 1500990007 ㉓ Mose A. Miller
OR.43-440 12/8/1999
OR.204-2979 6/3/2008
0.41 ac p.14-473
- 1500592001 ㉔ Maynard E. and Martha Troyer
OR.69-911 3/19/2001
0.89 ac p.16-804
- 1500592003 ㉕ Ray Alan and Laura Weaver
OR.68-318 2/23/2001
0.898 ac p.17-790
- 1500990008 ㉖ Marvin M. and Edna Miller
OR.69-432 3/13/2001
0.447 ac p.17-809
- 1500140001 ㉗ Christopher J. and Kristina K. Gertz
OR.84-315 8/13/2001
1.475 ac p.18-46
- 1500123001 ㉘ Malcolm D. and Sandra L. Miller
OR.153-263 6/17/2003
0.253 ac p.18-645
- 1500990002 ㉙ Amy Sue Miller, trustee
OR.201-547 11/19/2007
1.5 ac p.12-848
- 1500977001 ㉚ Dwayne R. and Marlene R. Kline
OR.184-784 10/21/2005
0.134 ac p.19-529
- 1500146000 ㉛ Timothy A. and Jean A. Hostetter
OR.189-519 1/2/1975
OR.184-1241 10/27/2005
1.197 ac p.7-379
- 1500687000 ㉜ Paul A. and Barbara Ann Miller
265-260 7/18/1994
1.22 ac p.7-105
- 1501081002 ㉝ Jerry A. and Judith A. Rober
OR.190-2703 8/3/2006
1.5 ac p.19-775
- 1500212000 ㉞ John E. and Ruth Ann Ware, co-trustees
OR.205-318 6/6/2008
0.144 ac
- 1500977002 ㉟ Winesburg Hardwood Lumber Co.
OR.184-1573 1/24/2007
1.539 ac p.19-804
- 1500374000 ㊱ Verba A. Miller
200-856 1/19/1978
1.553 ac p.8-143
- 1500149000 ㊲ Elmer J. and Shirley M. Rober
241-334 11/22/1988
1.866 ac p.7-749
- 1500554000 ㊳ Nathan P. and Melissa R. Jones
OR.117-186 7/9/2002
1.26 ac p.4-179
- 1500686000 ㊴ Paul A. and Barbara Ann Miller
265-260 7/18/1994
1.25 ac p.7-181
- 1500543000 ㊵ Christena M. Yoder
276-849 6/15/1997
1.389 ac p.15-136



- ★ Deer Trace Subdivision
Plat 2-450 Platted 9/18/2007
- 150004009 ★ Robert H. and Mary E. Klinger
OR.200-2483 11/1/2007
4.347 ac p.2-450
- 150004010 ★ Eaton Realty, Ltd.
OR.205-2293 7/10/2008
3.357 ac p.2-450
- 150004011 ★ James I. Miller
OR.205-1986 6/27/2008
3.332 ac p.2-450
- 150004012 ★ Eaton Realty, Ltd.
OR.201-1980 12/11/2007
6.999 ac total p.2-450
- 150004013 ★ Eaton Realty, Ltd.
OR.201-1980 12/11/2007
14.999 ac total p.2-450
- 150004014 ★ Jonathan J. Yoder
OR.208-1327 8/25/2008
16.996 ac total p.2-450



LET IT BE KNOWN, THIS MAP HAS BEEN PREPARED AS A REFERENCE GUIDE TO PROPERTY OWNERSHIP. WE BELIEVE THIS INFORMATION TO BE CORRECT AND CURRENT; HOWEVER IT IS NOT INTENDED FOR ANY LEGAL USE, WHETHER IT BE IN SALES, TRANSFERS, TRADES, LEASES OF ANY TYPE, ETC., AND DO NOT ACCEPT RESPONSIBILITY FOR ERRORS OF ANY NATURE OR OMISSIONS CONTAINED HEREIN.

new survey required for next transfer

Last Revision: 12/12/2008
T-10, R-5, 4th. Qtr.
Lots 1,2,3,13,14,15
Paint Twp.
Holmes County, Ohio

P-07

Walnut Creek Township
T9, R5, 1st. Qtr. Lot 3 WC-11

Walnut Creek Township T9, R5, 1st. Qtr. Lot 2 WC-17

Walnut Creek Township T9, R5, 1st. Qtr. Lot 1 WC-17

Walnut Creek Township
T9, R4, Sec.5 WC-23

T10, R4, 3rd. Qtr. Lot 35 P-10

T10, R4, 3rd. Qtr. Lot 34 P-10

T10, R4, 3rd. Qtr. Lot 33 P-10

T10, R5, 4th. Qtr. Lot 4 P-08

T10, R5, 4th. Qtr. Lot 12 P-08