

1500046002 ① Robert L. and Esther R. Coblentz  
230-514 3/12/1986  
0.555 ac p.10-537

1500046001 ② Winesburg Choir Company, Ltd.  
OR.197-2598 6/14/2007  
0.384 ac p.9-2

1500508000 ③ Jonathan W. Sprunger and Stephen Berg  
213-372 6/19/1981  
1.105 ac p.7-679

1500484000 ④ Owen L. and Linda O. Coblentz  
265-444 8/5/1994  
268-979 6/9/1995  
1.064 ac p.5-149

1500963000 ⑤ Jeffery J. and Leah Coblentz  
OR.176-2263 11/24/2004  
1.322 ac p.19-102

1500467000 ⑥ Jon M. and Cassie R. Mast  
OR.173-541 6/18/2004  
1.266 ac p.19-102

1500463001 ⑦ Jon M. and Cassie R. Mast  
OR.173-541 6/18/2004  
0.452 ac p.19-102

1500042000 ⑧ Verna Coblentz  
198-166 10/20/1976  
259-252 3/23/1993  
1.35 ac p.7-672

1500473000 ⑨ Paul Mark and Beverly Sue Miller  
275-666 10/11/1996  
OR.13-717 7/31/1998  
1.851 ac p.5-149

1500509000 ⑩ Jonathan W. Sprunger and Stephen Berg  
213-372 6/19/1981  
1.267 ac p.8-498

1501043000 ⑪ Junior Swartzentruber, trustee  
OR.120-130 8/13/2002  
0.602 ac p.9-64

1500474000 ⑫ Junior Swartzentruber, trustee  
OR.120-130 8/13/2002  
0.819 ac p.9-64

1500416000 ⑬ Pleasant View Conservative Mennonite Church  
149-445 1/31/1963  
0.35 ac p.3-528

1500964001 ⑭ Conrad G. and Ruth A. Troyer  
OR.177-80 12/13/2004  
1.059 ac p.12-628

1500415001 ⑮ Melvin M. and Mary R. Miller  
OR.178-1094 2/17/2005  
1.358 ac p.19-314

1500582000 ⑯ Roger and Dianne Wornes  
207-177 8/13/1979  
0.447 ac p.8-470

1500944004 ⑰ Holmes County Board of Commissioners  
248-986 10/10/1990  
270-164 9/6/1995  
1.183 ac p.13-120

1500944017 ⑱ Allen R. and Ros Anna H. Troyer  
OR.185-2048 12/20/2005  
0.333 ac p.19-582

1500046005 ⑲ Robert L. and Esther R. Coblentz  
OR.188-3202 5/17/2006  
1.775 ac p.19-712

1500964008 ⑳ Owen L. and Linda O. Coblentz  
262-597 12/6/1993  
0.336 ac p.14-375

1500519004 ㉑ Dutch Brand Products, Inc.  
OR.192-781 10/11/2006  
0.16 ac p.14-381

1500473001 ㉒ Paul J. Miller, trustee 1/2  
Anna Miller, trustee 1/2  
OR.157-163 7/18/2003  
OR.157-166 7/18/2003  
0.839 ac p.14-939

1500944009 ㉓ Holmes County Board of Commissioners  
281-489 11/21/1997  
1.912 ac p.16-586

1500048001 ㉔ Fannie Swartzentruber  
OR.30-20 4/21/1999  
0.165 ac p.17-71

1500397000 ㉕ Bryan Coblentz  
OR.195-788 2/28/2007  
1.193 ac p.7-678

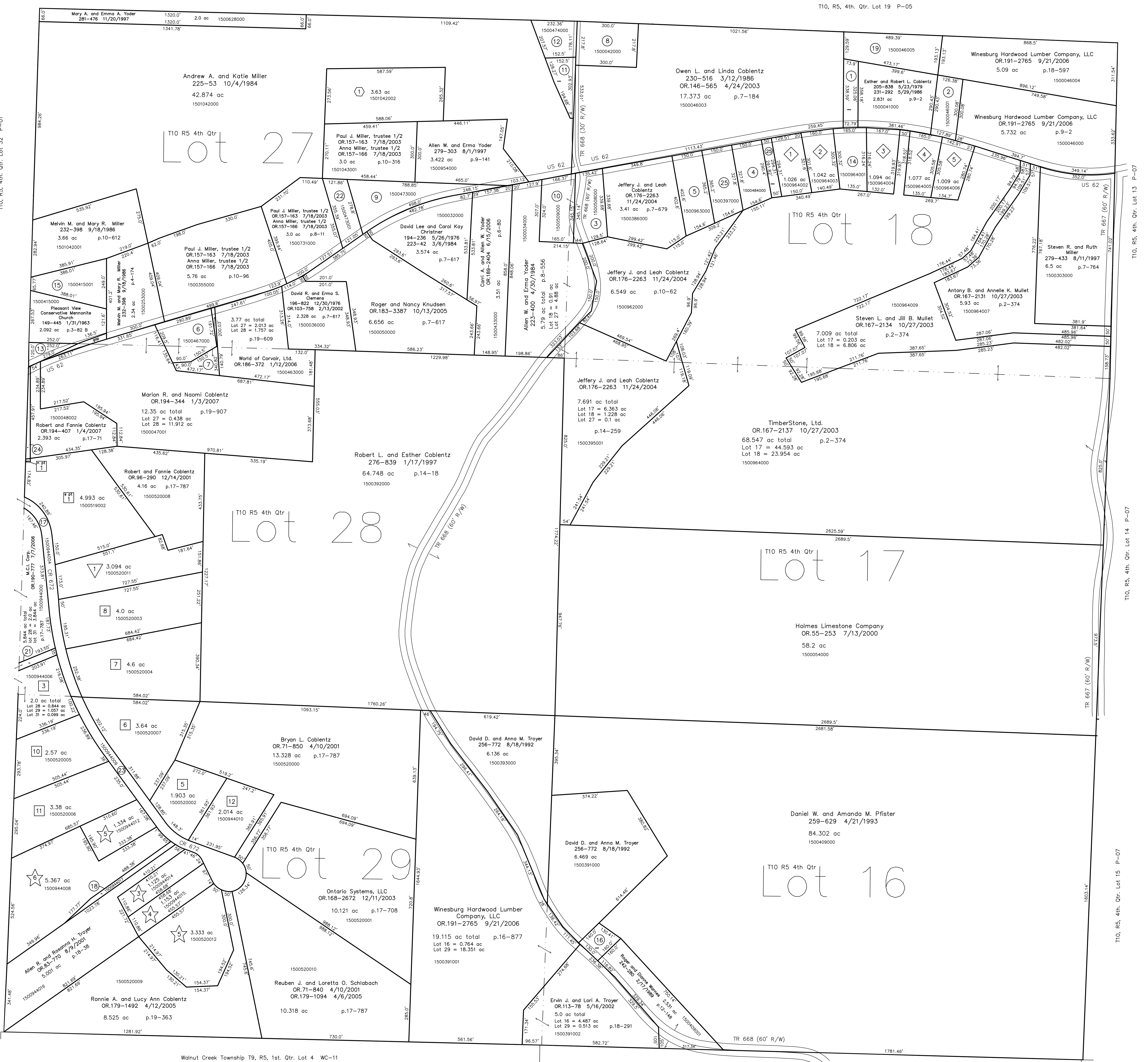
T10, R5, 4th. Qtr. Lot 26 P-05

T10, R5, 4th. Qtr. Lot 19 P-05

T10, R5, 4th. Qtr. Lot 32 P-01

T10, R5, 4th. Qtr. Lot 31 P-01

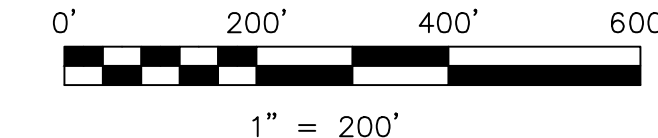
T10, R5, 4th. Qtr. Lot 30 P-01



- ◆ Seven Lick Estates  
Plat 13-172 Platted 10/16/1992
- 1500964002 Owen L. and Linda O. Coblentz  
262-597 12/6/1993  
1.026 ac p.13-172
- 1500964003 Karen E. and William E. Roloff  
OR.195-568 2/22/2007  
1.042 ac p.13-172
- 1500964004 Hal V. and Shannon N. Stutzman  
280-531 7/1/1993  
1.094 ac p.13-172
- 1500964005 Merlin R. Coblentz  
OR.199-721 8/23/2007  
1.077 ac p.13-172
- 1500964006 Charles B. Kretzer  
OR.199-210 8/17/2007  
1.009 ac p.13-172
- ▽ Blackberry Acres Subdivision  
Plat 18-148 Platted 12/12/2001
- 1500520011 Marlon Ray and Ruby Miller  
OR.96-286 12/14/2001  
3.094 ac p.18-148
- ◇ Coblentz Cove  
Plat 18-214 Platted 2/26/2002
- 1501042002 Michael R. and Marie M. Coblentz  
OR.87-405 9/14/2001  
3.63 ac p.18-214

- ☆ Click Estates  
Plat 17-866 Platted 5/8/2001
- 1500944014 R & T Miller, Ltd.  
OR.170-3190 3/25/2004  
1.125 ac p.17-866
- 1500944015 R & T Miller, Ltd.  
OR.170-3190 3/25/2004  
1.153 ac p.17-866
- Click Estates First Addition  
Plat 19-325 Platted 3/8/2005
- 1500520012 R & T Miller, Ltd.  
OR.179-2487 4/26/2005  
3.333 ac p.19-325
- Click Estates Second Addition  
Plat 19-623 Platted 2/3/2006
- 1500944012 James J. and Ina N. Kline  
OR.170-2391 3/16/2004  
OR.181-1912 9/26/2005  
1.334 ac p.19-623
- 1500944008 Edwin and Melonie S. Rober  
OR.107-694 3/20/2002  
OR.183-1812 9/26/2005  
OR.187-1571 3/20/2006  
5.367 ac p.19-623

- East Holmes Industrial Park Allotment No.1  
Plat 2-224 Platted 11/14/1990
- 1500519002 Spt M.C.I. Corp  
OR.170-3190 11/15/1990  
4.993 ac p.2-224
- 1500519003 NWpt Fannie Swartzentruber  
251-885 6/21/1991  
0.008 ac p.12-689
- East Holmes Industrial Park Allotment No.3  
Plat 13-197 Platted 7/16/1993
- 1500944006 Dutch Brand Products, Inc.  
OR.192-781 10/11/2006  
2.0 ac total p.13-197  
Lot 28=0.844 ac, Lot 29=1.057 ac  
Lot 31=0.099 ac
- East Holmes Industrial Park Allotment No.5  
Plat 2-329 Platted 2/15/2001
- 1500520002 Timberstone Ltd.  
OR.88-1 2/20/2001  
1.903 ac p.2-329
- 1500520007 Winesburg Hardwood Lumber Company, LLC  
OR.191-2765 9/21/2006  
3.64 ac p.2-329
- 1500520004 David J. and Kerri J. Weaver  
OR.196-593 4/16/2007  
4.6 ac p.2-329
- 1500520003 Al Yoder Estates, Ltd.  
OR.104-828 2/22/2002  
4.0 ac p.2-329
- 1500520005 Timberstone Ltd.  
OR.88-1 2/20/2001  
2.57 ac p.2-329
- 1500520006 Homespun Treasures of Walnut Creek, Inc.  
OR.70-674 3/27/2001  
3.30 ac p.2-329
- 1500944010 Timberstone Ltd.  
OR.88-1 2/20/2001  
2.014 ac p.2-329



LET IT BE KNOWN, THIS MAP HAS BEEN PREPARED AS A REFERENCE GUIDE TO PROPERTY OWNERSHIP. WE BELIEVE THIS INFORMATION TO BE CORRECT AND CURRENT, HOWEVER IT IS NOT INTENDED FOR ANY LEGAL USE, WHETHER IT BE IN SALES, TRANSFERS, TRADES, LEASES OF ANY TYPE, ETC., AND DO NOT ACCEPT RESPONSIBILITY FOR ERRORS OF ANY NATURE OR OMISSIONS CONTAINED HEREIN.

new survey required for next transfer

Last Revision: 8/23/2007  
**T-10, R-5, 4th. Qtr.**  
**Lots 16,17,18,27,28,29**  
**Paint Twp.**  
**Holmes County, Ohio**

**P-04**

T10, R5, 4th. Qtr. Lot 13 P-07

T10, R5, 4th. Qtr. Lot 14 P-07

T10, R5, 4th. Qtr. Lot 15 P-07

Walnut Creek Township  
T9, R5, 1st. Qtr.  
Lot 2 WC-17

Walnut Creek Township T9, R5, 1st. Qtr. Lot 3 WC-11