

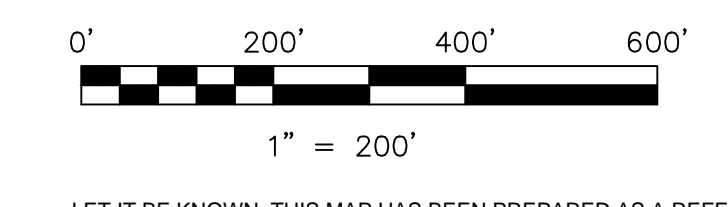
- 1500065000 ① John J. and Ruth R. Yoder
243-457 5/23/1989
262-168 11/3/1993
OR.103-885 2/14/2002
0.9 ac p.7-114
- 1500110000 ② Dennis J. and Lora A. Hershberger
236-405 9/8/1987
0.8 ac p.3-98
- 1500109000 ③ Dennis J. and Lora A. Hershberger
236-405 9/8/1987
0.8 ac p.3-98
- 1500222000 ④ George E. III and Beth A. Richards
OR.188-1318 4/26/2006
1.0 ac p.8-459
- 1501060000 ⑤ Carolyn A. Mathias
227-707 6/14/1985
OR.173-2590 7/13/2004
0.4551 ac p.10-424
- 1500223000 ⑥ Carolyn A. Mathias
237-119 9/18/1992
OR.173-2590 7/13/2004
1.01 ac p.8-188
- 1500336002 ⑦ John J. and Ruth Yoder
243-457 5/23/1989
0.8715 ac p.12-218
- 1500127001 ⑧ John J. and Ruth Yoder
243-457 5/23/1989
0.825 ac p.12-217
- 1500286002 ⑨ Norman J. and Karen Ann Troyer, co-trustees
281-515 11/24/1997
1.001 ac p.14-571
- 1501061008 ⑩ Glenn R. Parks
285-943 12/13/1994
OR.87-52 8/28/2001
1.0 ac p.14-661
- 1501061009 ⑪ Robert W. Jr. and Susanna E. Hippert
OR.110-436 4/19/2002
1.381 ac p.18-262
- 1500448000 ⑫ Atlee L. and Edna Schlabach
188-431 8/29/1974
1.41 ac p.3-11
- 1500093000 ⑬ David M. and Alice Lucille Hershberger
169-292 2/17/1969
253-658 12/4/1991
1.558 ac p.3-56
- 1500286003 ⑭ David E. Miller and Loretta Schlabach
276-500 12/17/1996
1.874 ac p.16-308
- 1500449000 ⑮ Atlee L. and Edna Schlabach
188-431 8/29/1974
1.672 ac p.5-67
- 1500127002 ⑯ Dennis J. and Lora A. Hershberger
OR.188-1318 4/26/2006
0.107 ac p.19-1015
- 1500286000 ⑰ Emanuel J.J. and Gertrude M. Miller, trustees
OR.198-1237 7/16/2007
0.207 ac p.19-1082



▽ Duvall Acres Allotment No.1
Plat 15-12 Platted 9/7/1993
1500224001 ▽ John J. and Ruth R. Yoder
265-405 7/29/1994
OR.103-885 2/14/2002
1.649 ac p.15-12

T10, R4, 3rd. Qtr. Lot 22 P-14

T10, R4, 3rd. Qtr. Lot 11 P-14



LET IT BE KNOWN, THIS MAP HAS BEEN PREPARED AS A REFERENCE GUIDE TO PROPERTY OWNERSHIP. WE BELIEVE THIS INFORMATION TO BE CORRECT AND CURRENT, HOWEVER IT IS NOT INTENDED FOR ANY LEGAL USE, WHETHER IT BE IN SALES, TRANSFERS, TRADES, LEASES OF ANY TYPE, ETC., AND DO NOT ACCEPT RESPONSIBILITY FOR ERRORS OF ANY NATURE OR OMISSIONS CONTAINED HEREIN.

- new survey required
- for next transfer

Last Revision: 8/15/2007
T-10, R-4, 2nd. Qtr. Lot 2
T-10, R-4, 3rd. Qtr.
Lots 9,10,23,24
Paint Twp.
Holmes County, Ohio

P-15

Tuscarawas County, Wayne Township
T10, R4, 3rd. Qtr. Lot 8
Tuscarawas County, Wayne Township
T10, R4, 3rd. Qtr. Lot 7