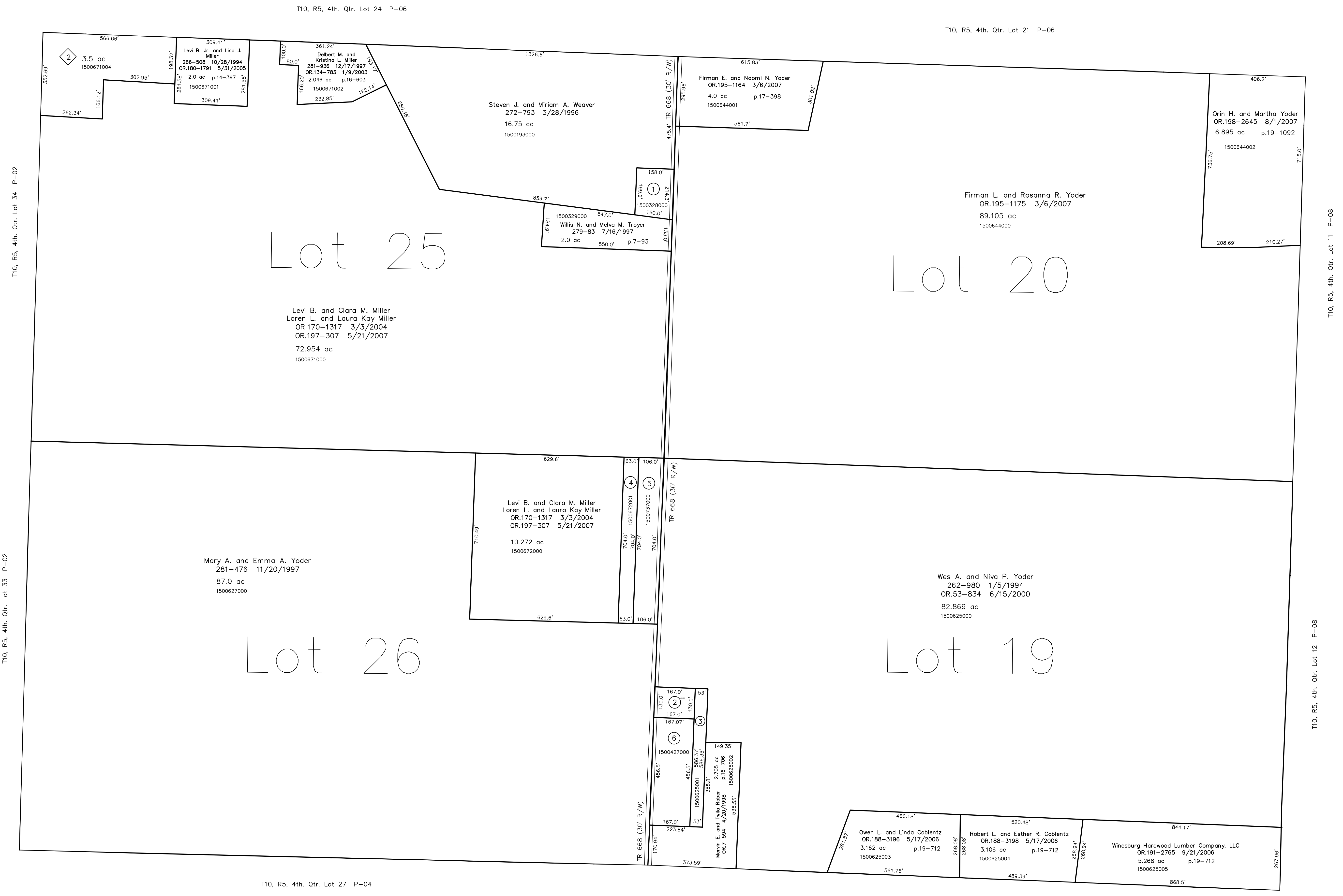


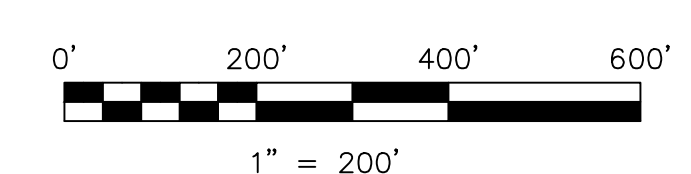
- 1500328000 ① Willis N. and Melva M. Troyer
279-83 7/16/1997
0.75 ac p.7-93
- 1590010000 ② American Telephone and Telegraph Company
175-151 10/8/1970
0.42 ac p.5-53
- 1500625001 ③ Mervin E. and Twila Rober
264-524 5/20/1994
0.719 ac p.14-514
- 1500672001 ④ Esther C. Fahr
OR.177-1337 1/3/2005
1.018 ac p.12-749
- 1500737000 ⑤ Esther C. Fahr
OR.177-1337 1/3/2005
1.71 ac
- 1500427000 ⑥ Mervin E. and Twila Rober
264-524 5/20/1994
1.751 ac p.8-112



Miller's Wooded Acres Subdivision Replat
Plat 19-893 Plotted 12/20/2006

1500671004 ⑦ Loren L. and Laura Kay Miller
OR.195-2149 3/19/2007
3.5 ac p.19-893

Last Revision: 8/1/2007
T-10, R-5, 4th. Qtr.
Lots 19,20,25,26
Paint Twp.
Holmes County, Ohio



LET IT BE KNOWN, THIS MAP HAS BEEN PREPARED AS A REFERENCE GUIDE TO PROPERTY OWNERSHIP. WE BELIEVE THIS INFORMATION TO BE CORRECT AND CURRENT; HOWEVER IT IS NOT INTENDED FOR ANY LEGAL USE, WHETHER IT BE IN SALES, TRANSFERS, TRADES, LEASES OR ANY TYPE, ETC., AND DO NOT ACCEPT RESPONSIBILITY FOR ERRORS OF ANY NATURE OR OMISSIONS CONTAINED HEREIN.

new survey required
for next transfer

P-05