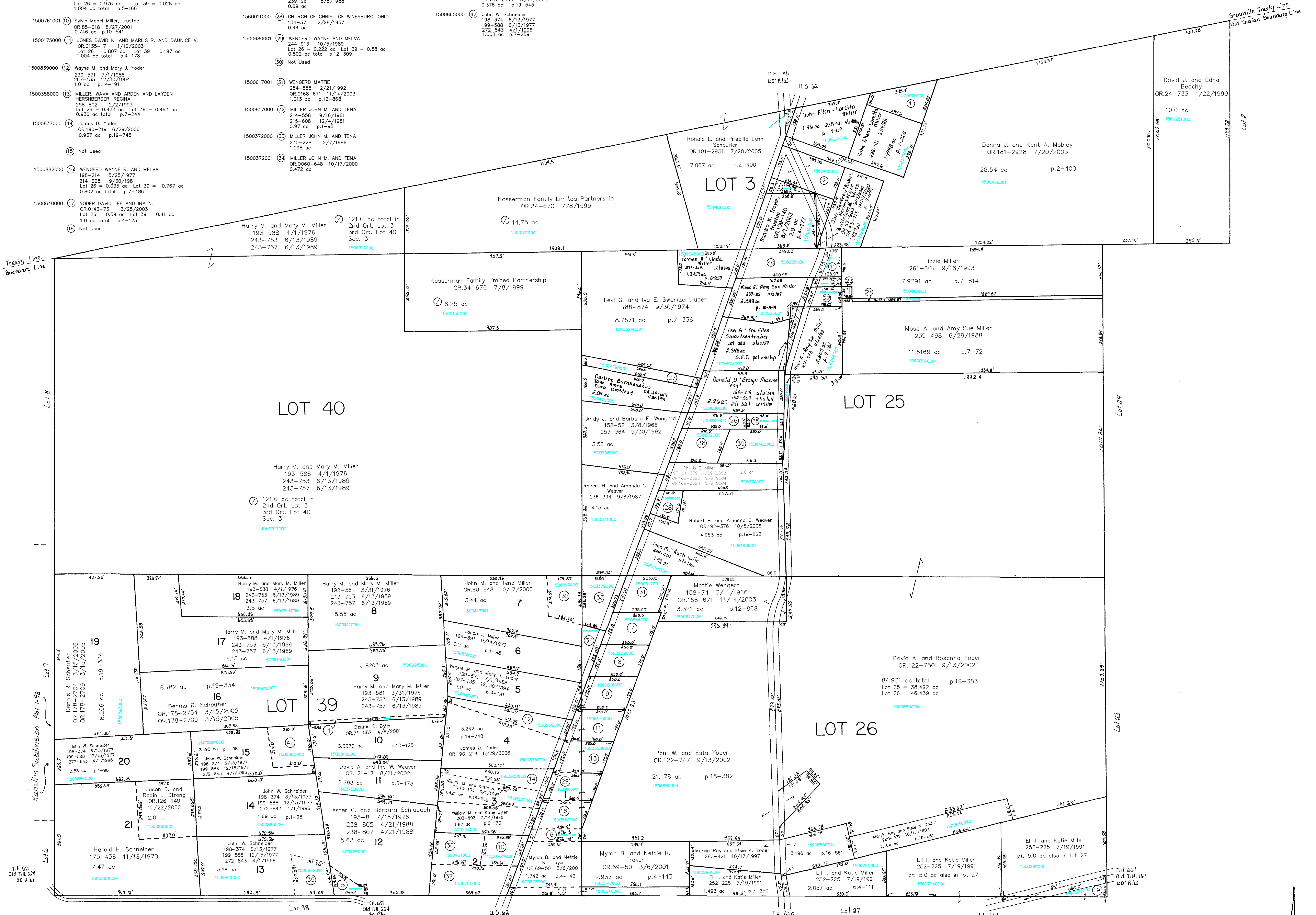


- 1500320000 ① MILLER JOHN ALLEN AND LORETTA  
238-111 3/14/1988  
1.0012 ac p.8-622
- 1500410000 ② TODARO, JAMES G. and VARDON, ALICE P.  
264-539 5/23/1994  
1.35 ac p.5-111
- 1500412000 ③ TROYER SANDRA K. TRUSTEE  
OR.0199-140 8/1/2003  
0.539 ac p.5-111
- 1500986000 ④ Dennis R. Byler  
OR.71-587 4/8/2001  
0.1797 ac p.10-125
- 1500790000 ⑤ STARN ROBERT W. AND IDA MAE  
249-248 11/2/1990  
0.33 ac
- 1500890000 ⑥ YODER PAUL W. AND ESTA  
OR.0122-747 9/13/2002  
0.294 ac p.18-382
- 1500346000 ⑦ MILLER JUDY A.  
OR.0013-146 7/21/1998  
1.004 ac p.4-84
- 1500289000 ⑧ MILLER FREEMAN A. AND DEBRA K.  
206-680 7/30/1979  
1.004 ac p.4-84
- 1500616000 ⑨ WENGER DEAN RAY  
261-354 8/30/1981  
Lot 26 = 0.976 ac Lot 39 = 0.028 ac  
1.004 ac total p.5-166
- 1500761001 ⑩ Sylvia Mabel Miller, trustee  
OR.85-618 8/27/2001  
0.746 ac p.10-164
- 1500175000 ⑪ JONES DAVID K. AND MARLIS R. AND DAUNICE V.  
OR.0135-17 1/10/2003  
Lot 26 = 0.807 ac Lot 39 = 0.197 ac  
1.004 ac total p.4-178
- 1500839000 ⑫ Wayne M. and Mary J. Yoder  
239-571 7/1/1988  
267-135 12/30/1994  
1.0 ac p.4-101
- 1500358000 ⑬ MILLER, WAVA AND ARDEN AND LAYDEN  
HERSBERGER, REGINA  
258-802 2/2/1993  
Lot 26 = 0.475 ac Lot 39 = 0.463 ac  
0.938 ac total p.7-244
- 1500837000 ⑭ James D. Yoder  
OR.190-219 6/29/2006  
0.937 ac p.19-748
- ⑮ Not Used
- 1500882000 ⑯ WENGER WAYNE R. AND MELVA  
198-214 5/25/1977  
214-698 9/30/1981  
Lot 26 = 0.035 ac Lot 39 = 0.767 ac  
0.802 ac total p.7-486
- 1500640000 ⑰ YODER DAVID LEE AND INA N.  
OR.0143-73 3/25/2003  
Lot 26 = 0.59 ac Lot 39 = 0.41 ac  
1.0 ac total p.4-125
- ⑱ Not Used

- 1500292003 ⑲ MILLER EUI I. AND KATIE  
252-225 7/19/1991  
Part of 5.0 ac
- 1500680005 ⑳ YODER DAVID A. AND ROSANNA  
OR.0122-750 9/13/2002  
0.167 ac p.18-383
- 1500414000 ㉑ MILLER LIZZIE  
261-601 9/16/1993  
0.1707 ac p.8-788
- 1500414001 ㉒ MILLER MOSE A. AND AMY SUE  
239-498 6/28/1988  
0.491 ac p.11-99
- 1500413001 ㉓ MILLER MOSE A. AND AMY SUE  
239-498 6/28/1988  
0.0709 ac p.11-99
- 1500606001 ㉔ MILLER LIZZIE  
261-601 9/16/1993  
0.4901 ac p.10-627
- 1500481001 ㉕ Robert H. and Amanda C. Weaver  
OR.182-395 7/29/2005  
0.374 ac p.3-828
- 1500481000 ㉖ Robert H. and Amanda C. Weaver  
OR.182-395 7/29/2005  
0.593 ac p.3-828
- 1500479000 ㉗ SWARTZENTRUBER LEVI G. AND IVA E.  
239-961 8/5/1988  
0.69 ac
- 1560011000 ㉘ CHURCH OF CHRIST OF WINESBURG, OHIO  
134-37 2/28/1957  
0.46 ac
- 1500680001 ㉙ WENGER WAYNE AND MELVA  
244-558 10/5/1989  
Lot 26 = 0.222 ac Lot 39 = 0.58 ac  
0.802 ac total p.12-309
- ㉚ Not Used
- 1500617001 ㉛ WENGER MATTIE  
254-555 2/21/1992  
OR.0168-671 11/14/2003  
1.013 ac p.12-868
- 1500817000 ㉜ MILLER JOHN M. AND TENA  
214-558 9/16/1981  
215-608 12/4/1981  
0.97 ac p.1-98
- 1500372000 ㉝ MILLER JOHN M. AND TENA  
238-228 2/7/1986  
1.098 ac
- 1500372001 ㉞ MILLER JOHN M. AND TENA  
OR.0060-648 10/17/2000  
0.472 ac

- 1500862001 ㉟ SCHNEIDER MATTHEW J. AND ANDREA J.  
OR.0109-485 4/9/2002  
0.81 ac p.18-254
- 1500761000 ㊱ Steven D. and Leanna W. Yoder  
OR.182-50 7/27/2005  
0.981 ac p.5-124
- 1500760000 ㊲ Steven D. and Leanna W. Yoder  
OR.182-50 7/27/2005  
1.4 ac p.4-180
- 1500272000 ㊳ MILLER PHYLLIS E.  
168-88 9/23/1968  
OR.101-377 1/29/2002  
OR.169-3320 2/9/2004  
OR.169-3324 2/9/2004  
1.0 ac
- 1500482000 ㊴ Robert H. and Amanda C. Weaver  
OR.182-395 7/29/2005  
1.15 ac
- 1500265000 ㊵ Calvin J. and Dorothy Jane Miller  
188-326 8/22/1974  
1.374 ac
- 1500265001 ㊶ Lizzie Miller  
OR.184-2849 11/16/2005  
0.375 ac p.18-545
- 1500865000 ㊷ John W. Schneider  
198-374 6/13/1977  
199-588 6/13/1977  
272-843 4/1/1996  
1.006 ac p.7-259



T-10, R-4  
2nd. Qtr. lot 3  
3rd. Qtr. lots 25, 26, 39, 40  
PAINT TWP.  
SCALE: 1" = 200'

Last Revision: 10/5/2006

LET IT BE KNOWN, THIS MAP HAS BEEN PREPARED AS A REFERENCE GUIDE TO PROPERTY OWNERSHIP. WE BELIEVE THIS INFORMATION TO BE CORRECT AND CURRENT. HOWEVER, IT IS NOT INTENDED FOR ANY LEGAL USE, WHETHER IT BE IN SALES, TRANSFERS, TRUSTS, LEASES OF ANY TYPE, ETC., AND DO NOT ACCEPT RESPONSIBILITY FOR ERRORS OF ANY NATURE OR OMISSIONS CONTAINED HEREIN.