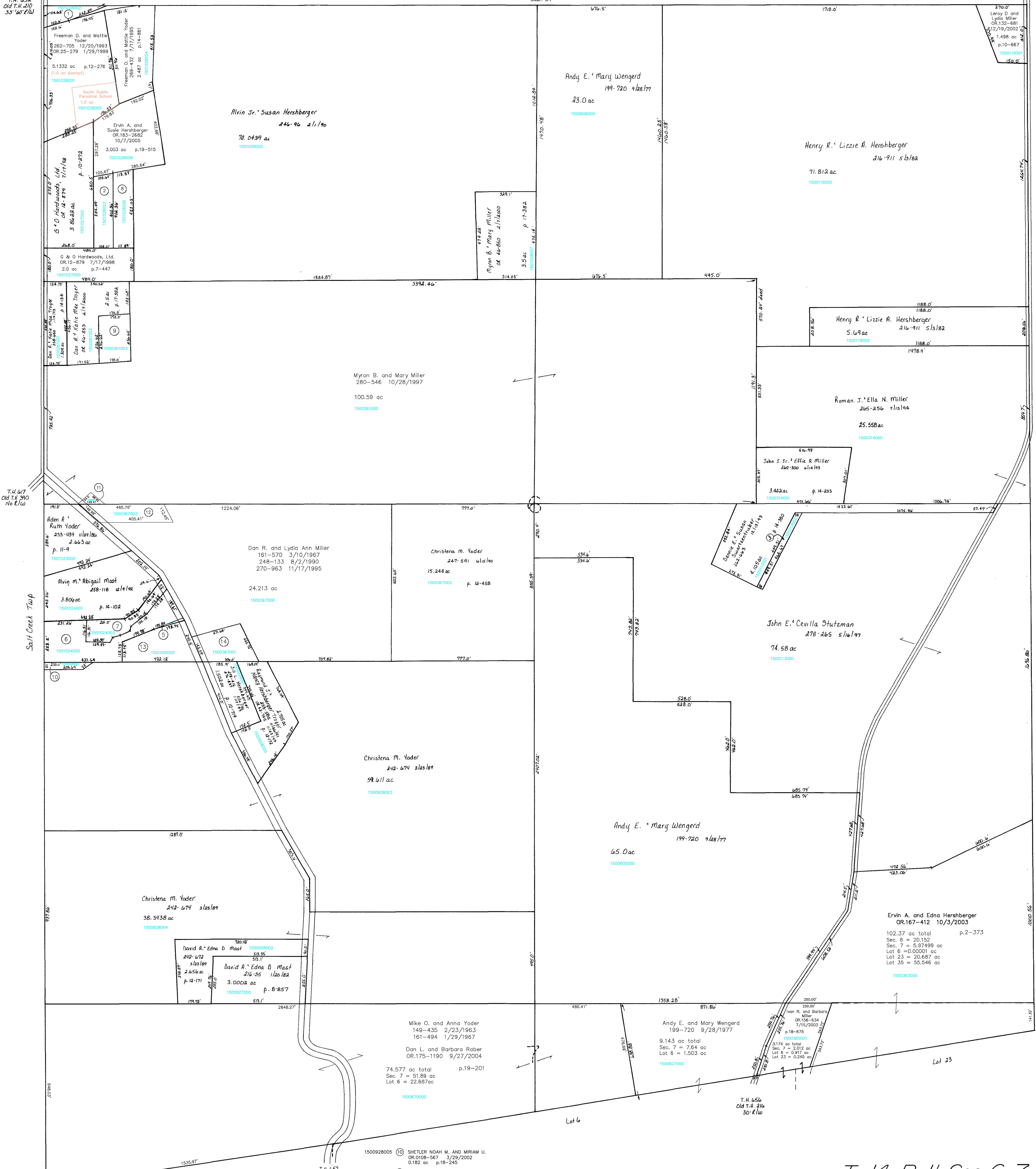


T.H. 652
Old T.H. 210
33' 40' E/W

Sec. 31

T.H. 656
Old T.H. 216
30' R/W



Greenville Treaty Line
Old Indian Boundary Line

- 1501028002 ① HILLSIDE WOOD, LTD.
277-795 4/11/1997
0.472 ac p.12-488
- 1501028003 ② G & O HARDWOODS, LTD.
OR.01012-879 7/17/1998
0.9403 ac p.14-335
- 1500113002 ③ SWARTZENTRUBER DANNIE E. AND SUSAN
268-802 5/31/1995
0.315 ac p.14-514
- ④ Not Used
- 1501024002 ⑤ MAST REUBEN E. AND FRED A.
OR.0171-3216 5/3/2004
0.029 ac p.14-992
- 1501024000 ⑥ SHELTER NOAH M. AND MIRIAM U.
271-459 12/27/1995
271-524 12/29/1995
272-958 4/11/1996
2.703 ac p.18-441
- 1501024003 ⑦ HOPEWOOD, INC.
272-922 4/8/1996
0.857 ac p.16-68
- 1501028006 ⑧ HERSHBERGER ERWIN A. AND SUSIE
278-223 5/13/1987
1.0584 ac p.16-421
- 1500261003 ⑨ MILLER IVA B.
OR.0048-188 3/3/2000
1.0 ac p.17-382
- 1500928005 ⑩ SHELTER NOAH M. AND MIRIAM U.
OR.0108-567 3/29/2002
0.182 ac p.18-245
- 1500262001 ⑪ YODER ADEN A. AND RUTH
OR.0130-195 11/26/2002
0.105 ac p.18-441
- 1500367003 ⑫ YODER ADEN A. AND RUTH
OR.0130-195 11/26/2002
1.0 ac p.18-441
- 1501000000 ⑬ MAST REUBEN E. AND FRED A.
OR.0171-3216 5/3/2004
1.58 ac p.9-212
- 1500367001 ⑭ Mark D. and Erma Miller
247-589 6/15/1990
1.143 ac p.12-458

T-14, R-11, Sec. 6, 7
PAINT TWP.
SCALE: 1" = 200'

Last Revision: 10/7/2005

LET IT BE KNOWN, THIS MAP HAS BEEN PREPARED AS A REFERENCE GUIDE TO PROPERTY OWNERSHIP. WE BELIEVE THIS INFORMATION TO BE CORRECT AND CURRENT, HOWEVER, IT IS NOT INTENDED FOR ANY LEGAL USE, WHETHER IT BE IN SALES, TRANSFERS, TRADES, LEASES OF ANY TYPE, ETC. AND DO NOT ACCEPT RESPONSIBILITY FOR ERRORS OF ANY NATURE OR OMISSIONS CONTAINED HEREIN.

10-16