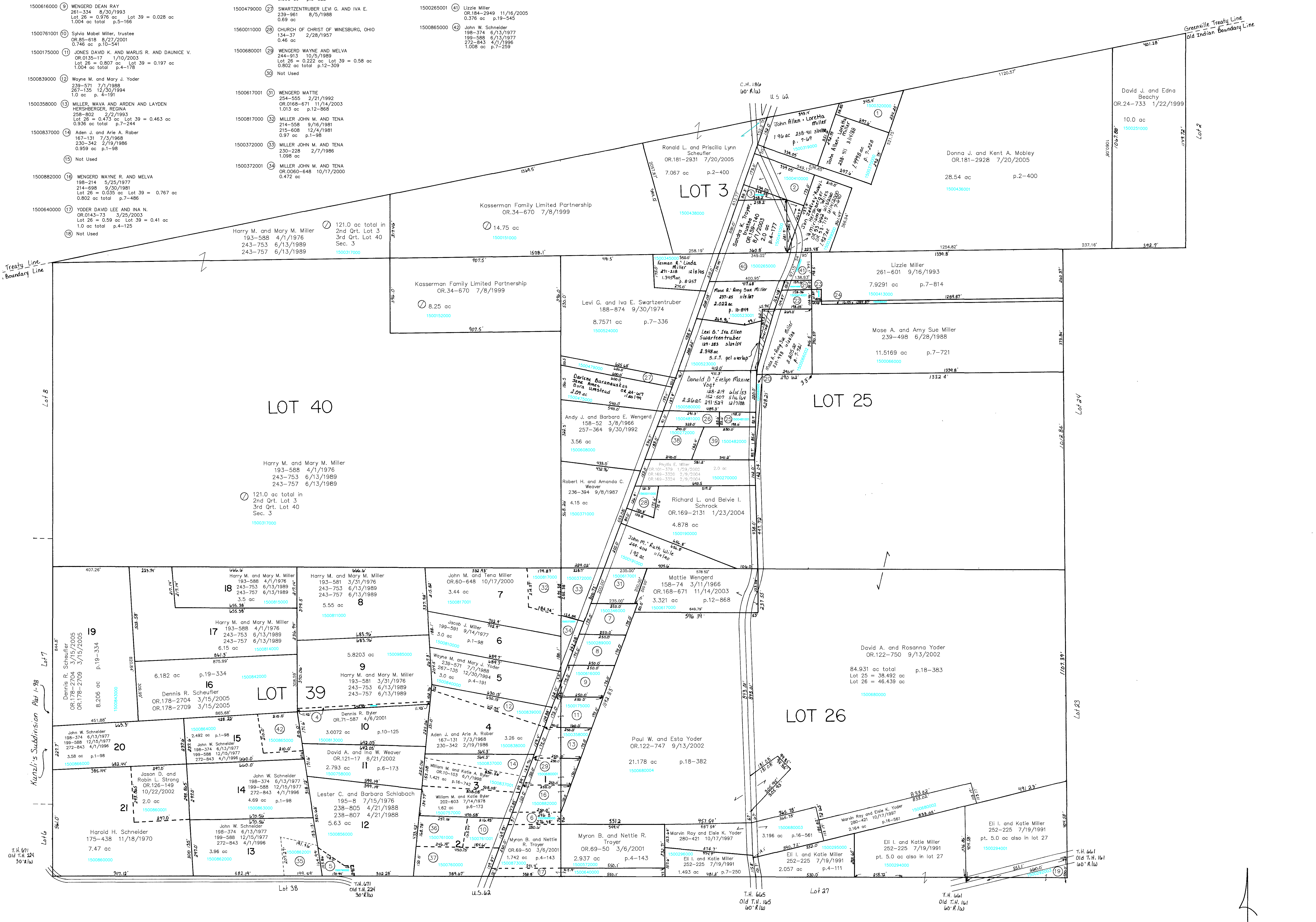


- 1500320000 ① MILLER JOHN ALLEN AND LORETTA
238-111 5/14/1989
1.0012 ac p.8-622
- 1500410000 ② TODARO, JAMES G. and VARDON, ALICE P.
264-539 5/23/1994
1.35 ac p.5-111
- 1500412000 ③ TROYER SANDRA K. TRUSTEE
OR.0159-140 8/1/2003
0.539 ac p.5-111
- 1500986000 ④ Dennis R. Byler
OR.71-587 4/8/2001
0.1797 ac p.10-125
- 1500790000 ⑤ STARN ROBERT W. AND IDA MAE
249-248 11/2/1990
0.33 ac
- 1500890000 ⑥ YODER PAUL W. AND ESTA
OR.0122-747 9/13/2002
0.294 ac p.18-382
- 1500346000 ⑦ MILLER JUDY A.
OR.0013-146 7/21/1998
1.004 ac p.4-84
- 1500289000 ⑧ MILLER FREEMAN A. AND DEBRA K.
208-680 7/30/1979
1.004 ac p.4-84
- 1500616000 ⑨ WENGER DEAN RAY
261-354 8/30/1981
Lot 26 = 0.976 ac Lot 39 = 0.028 ac
1.004 ac total p.5-166
- 1500761001 ⑩ Sylvia Mabel Miller, trustee
OR.85-618 8/27/2001
0.746 ac p.10-164
- 1500175000 ⑪ JONES DAVID K. AND MARLIS R. AND DAUNICE V.
OR.0135-17 1/10/2003
Lot 26 = 0.807 ac Lot 39 = 0.197 ac
1.004 ac total p.4-178
- 1500839000 ⑫ Wayne M. and Mary J. Yoder
239-571 7/1/1988
267-135 12/30/1994
1.0 ac p.4-101
- 1500358000 ⑬ MILLER, WAVA AND ARDEN AND LAYDEN
HERSBERGER, REGINA
258-802 2/2/1993
Lot 26 = 0.475 ac Lot 39 = 0.463 ac
0.938 ac total p.7-244
- 1500837000 ⑭ Aden J. and Arne A. Rober
167-131 7/3/1988
230-342 2/19/1988
0.999 ac p.1-98
- ⑮ Not Used
- 1500882000 ⑯ WENGER WAYNE R. AND MELVA
198-214 5/25/1977
214-698 9/30/1981
Lot 26 = 0.035 ac Lot 39 = 0.767 ac
0.802 ac total p.7-486
- 1500640000 ⑰ YODER DAVID LEE AND INA N.
OR.0143-73 3/25/2003
Lot 26 = 0.59 ac Lot 39 = 0.41 ac
1.0 ac total p.4-125
- ⑱ Not Used

- 1500292003 ⑲ MILLER EUI I. AND KATIE
252-225 7/19/1991
Part of 5.0 ac
- 1500680000 ⑳ YODER DAVID A. AND ROSANNA
OR.0122-750 9/13/2002
0.167 ac p.18-383
- 1500761000 ㉑ Steven D. and Leanna W. Yoder
OR.182-50 7/27/2005
0.981 ac p.5-124
- 1500760000 ㉒ Steven D. and Leanna W. Yoder
OR.182-50 7/27/2005
1.4 ac p.4-180
- 1500272000 ㉓ MILLER PHYLIS E.
168-88 9/23/1968
OR.101-377 1/29/2002
OR.169-3320 2/9/2004
OR.169-3324 2/9/2004
1.0 ac
- 1500481000 ㉔ Robert H. and Amanda C. Weaver
OR.182-395 7/29/2005
1.15 ac
- 1500265000 ㉕ Calvin J. and Dorothy Jane Miller
188-326 8/22/1974
1.374 ac
- 1500265001 ㉖ Lizzie Miller
OR.184-2849 11/16/2005
0.375 ac p.18-545
- 1500865000 ㉗ John W. Schneider
198-374 6/13/1977
199-588 6/13/1977
272-843 4/1/1996
1.006 ac p.7-259
- ⑳ Not Used

- 1500862001 ㉘ SCHNEIDER MATTHEW J. AND ANDREA J.
OR.0109-485 4/9/2002
0.81 ac p.18-254
- 1500414000 ㉙ MILLER LIZZIE
261-601 9/16/1993
0.1707 ac p.8-788
- 1500414001 ㉚ MILLER MOSE A. AND AMY SUE
239-498 6/28/1988
0.491 ac p.11-99
- 1500413001 ㉛ MILLER MOSE A. AND AMY SUE
239-498 6/28/1988
0.0709 ac p.11-99
- 1500606001 ㉜ MILLER LIZZIE
261-601 9/16/1993
0.4901 ac p.10-627
- 1500481001 ㉝ Robert H. and Amanda C. Weaver
OR.182-395 7/29/2005
0.374 ac p.3-828
- 1500481000 ㉞ Robert H. and Amanda C. Weaver
OR.182-395 7/29/2005
0.593 ac p.3-828
- 1500479000 ㉟ SWARTZENTRUBER LEVI G. AND IVA E.
239-961 8/5/1988
0.69 ac
- 1560011000 ㊱ CHURCH OF CHRIST OF WINESBURG, OHIO
134-37 2/28/1957
0.46 ac
- 1500680001 ㊲ WENGER WAYNE AND MELVA
244-913 10/5/1989
Lot 26 = 0.222 ac Lot 39 = 0.58 ac
0.802 ac total p.12-309
- ㊳ Not Used
- 1500617001 ㊴ WENGER MATTIE
254-555 2/21/1992
OR.0168-671 11/14/2003
1.013 ac p.12-868
- 1500817000 ㊵ MILLER JOHN M. AND TENA
214-558 9/16/1981
215-608 12/4/1981
0.97 ac p.1-98
- 1500372000 ㊶ MILLER JOHN M. AND TENA
230-228 2/7/1986
1.098 ac
- 1500372001 ㊷ MILLER JOHN M. AND TENA
OR.0060-648 10/17/2000
0.472 ac
- ㊸ Not Used



T-10, R-4
2nd. Qtr. lot 3
3rd. Qtr. lots 25, 26, 39, 40
PAINT TWP.
SCALE: 1" = 200'

Last Revision: 11/16/2005

LET IT BE KNOWN, THIS MAP HAS BEEN PREPARED AS A REFERENCE GUIDE TO PROPERTY OWNERSHIP. WE BELIEVE THIS INFORMATION TO BE CORRECT AND CURRENT. HOWEVER, IT IS NOT INTENDED FOR ANY LEGAL USE, WHETHER IT BE IN SALES, TRANSFERS, TRADES, LEASES OF ANY TYPE, ETC., AND DO NOT ACCEPT RESPONSIBILITY FOR ERRORS OF ANY NATURE OR OMISSIONS CONTAINED HEREIN.