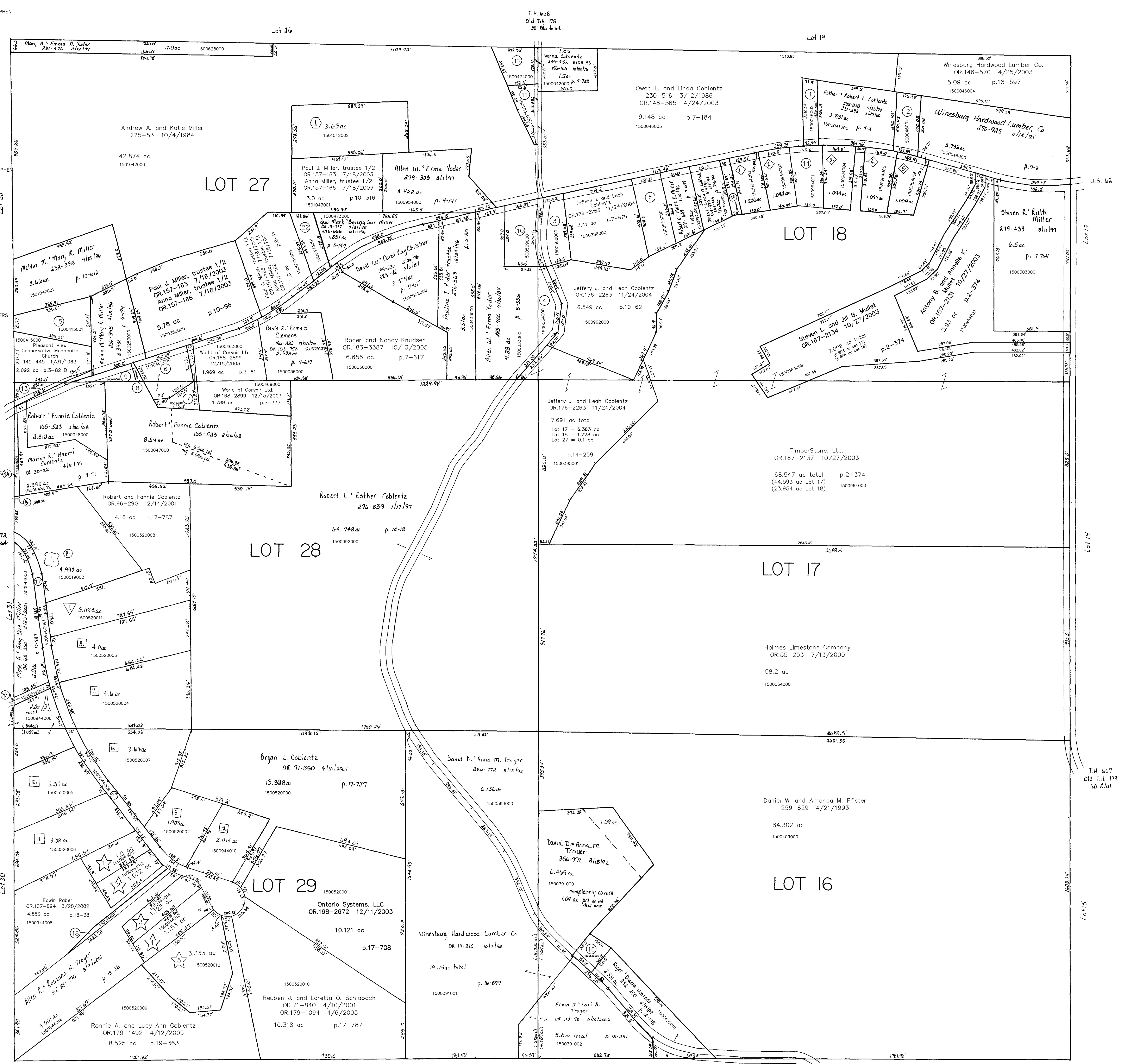


- 1500046002 ① COBLENTZ ROBERT L. AND ESTHER R.
230-514 3/12/1986
0.555 ac p.10-537
- 1500046001 ② WINESBURG HARDWOOD LUMBER
OR.0015-51 8/20/1998
0.854 ac p.3-2
- 1500508000 ③ SPRUNGER, JONATHAN W. and BERG, STEPHEN
213-372 6/19/1981
1.105 ac p.7-679
- 1500034000 ④ YODER ALLEN W. AND ERMA
223-400 4/30/1984
0.91 ac p.8-556
- 1500963000 ⑤ COBLENTZ JEFFERY J. AND LEAH
OR.0176-2263 11/24/2004
1.322 ac p.7-578
- 1500467000 ⑥ MAST JON M. AND CASSE R.
OR.0173-541 6/18/2004
Lot 27 = 0.959 ac Lot 28 = 0.307 ac
1.266 ac total p.18-102
- 1500463001 ⑦ MAST JON M. AND CASSE R.
OR.0173-541 6/18/2004
Lot 27 = 0.051 ac Lot 28 = 0.401 ac
0.452 ac total p.18-102
- 1500049000 ⑧ COBLENTZ ROBERT AND FANNIE
165-521 2/26/1968
0.053 ac calc.
- 1500049001 ⑨ COBLENTZ ROBERT AND FANNIE
165-521 2/26/1968
0.333 ac calc.
- 1500509000 ⑩ SPRUNGER, JONATHAN W. and BERG, STEPHEN
213-372 6/19/1981
1.267 ac p.8-498
- 1501043000 ⑪ SWARTZENTRUBER JUNIOR TRUSTEE
OR.0120-130 8/13/2002
0.602 ac p.9-64
- 1500474000 ⑫ SWARTZENTRUBER JUNIOR TRUSTEE
OR.0120-130 8/13/2002
0.819 ac p.9-64
- 1500416000 ⑬ PLEASANT VIEW CONSERVATIVE
Mennonite Church
149-445 1/31/1963
0.35 ac p.3-828
- 1500964001 ⑭ TROYER CONRAD C. AND RUTH A.
OR.0177-80 12/13/2004
1.059 ac p.12-628
- 1500415001 ⑮ Melvin M. and Mary R. Miller
OR.178-1094 2/17/2005
1.358 ac p.19-314
- 1500582000 ⑯ WARNES ROGER AND DIANNE
207-17 8/13/1979
0.447 ac p.8-470
- 1500944004 ⑰ HOLMES COUNTY BOARD OF COMMISSIONERS
DEDICATED C.H. 672
248-886 10/10/1990
270-164 9/6/1995
1.153 ac p.13-120
- 1500944017 ⑱ Allen R. and Ros Anna H. Troyer
OR.185-2048 12/20/2005
0.333 ac p.19-582
- ⑲ Not used
- 1500964008 ⑳ COBLENTZ OWEN L. AND LINDA O.
282-597 12/6/1993
0.336 ac p.14-376
- 1500519004 ㉑ N.J.M. FURNITURE OUTLET, INC.
262-666 12/13/1993
0.16 ac p.14-381
- 1500473001 ㉒ MILLER, PAUL J. TRUSTEE 1/2
MILLER, ANNA TRUSTEE 1/2
OR.0157-163 7/18/2003
OR.0157-166 7/18/2003
0.839 ac p.14-339
- 1500944009 ㉓ HOLMES COUNTY BOARD OF COMMISSIONERS
281-489 11/21/1997
1.912 ac p.16-586
- 1500048001 ㉔ SWARTZENTRUBER FANNIE
OR.030-20 4/21/1999
0.165 ac p.17-71



- ① Seven Lick Estates
Plat 13-172 Platted 10/16/1992
- 1500964002 ② COBLENTZ OWEN L. AND LINDA O.
282-597 12/6/1993
1.028 ac
- 1500964003 ③ KANDEL ROMAN L. JR. AND NAOMI J.
279-936 9/15/1997
1.042 ac
- 1500964004 ④ STUTZMAN HAL V. AND SHANNON M.
260-531 7/1/1993
1.094 ac
- 1500964005 ⑤ KANDEL ROMAN L. JR. AND NAOMI
OR.0053-355 6/7/2000
1.077 ac
- 1500964006 ⑥ MILLER MARVIN H. AND AMANDA
257-659 10/26/1992
1.009 ac
- ⑦ Blackberry Acres Subdivision
Plat 18-148 Platted 12/12/2001
- 1500520011 ⑧ MILLER MARION RAY AND RUBY
OR.0096-288 12/14/2001
3.094 ac
- ⑨ Coblentz Cove
Plat 18-214 Platted 2/26/2002
- 1501042002 ⑩ COBLENTZ MICHAEL R. AND MARIE M.
OR.0087-405 9/14/2001
3.63 ac
- ⑪ East Holmes Industrial Park Allotment No.1
Plat 2-224 Platted 11/14/1990
- 1500519002 ⑫ Spt M.C.I. CORP.
249-469 11/15/1990
4.993 ac
- 1500519003 ⑬ Nwp1 SWARTZENTRUBER FANNIE
251-885 6/21/1991
0.008 ac p.12-889
- ⑭ East Holmes Industrial Park Allotment No.3
Plat 13-197 Platted 7/16/1993
- 1500944006 ⑮ N.J.M. FURNITURE OUTLET, INC.
260-804 7/21/1993
Lot 28 = 0.844 ac Lot 29 = 1.057 ac
Lot 31 = 0.098 ac 2.0 ac total
- ⑯ East Holmes Industrial Park Allotment No.5
Plat 2-329 Platted 2/15/2001
- 1500520002 ⑰ TIMBERSTONE LTD.
OR.0068-1 2/20/2001
1.903 ac
- 1500520007 ⑱ WINESBURG HARDWOOD LUMBER
OR.0072-1 4/11/2001
3.64 ac
- 1500520004 ⑲ MILLER MICHAEL W. AND CATHY J.
OR.0073-1 4/23/2001
4.6 ac
- 1500520003 ⑳ AL YODER ESTATES, LTD.
OR.0104-828 2/22/2002
4.0 ac
- 1500520005 ㉑ TIMBERSTONE LTD.
OR.0068-1 2/20/2001
2.57 ac
- 1500520006 ㉒ HOMESPLUS TREASURES OF WALNUT CREEK, INC.
OR.0070-674 3/27/2001
3.38 ac
- 1500944010 ㉓ TIMBERSTONE LTD.
OR.0068-1 2/20/2001
2.014 ac
- ⑳ Click Estates
Plat 17-886 Platted 5/8/2001
- 1500944012 ㉔ KLINE JAMES J. AND IVA N.
OR.0170-2351 3/18/2004
1.0 ac
- 1500944013 ㉕ Edwin Raber
OR.183-1812 9/26/2005
- 1500944014 ㉖ R & T MILLER, LTD.
OR.0170-3190 3/25/2004
1.125 ac
- 1500944015 ㉗ R & T MILLER, LTD.
OR.0170-3190 3/25/2004
1.153 ac
- ㉘ Click Estates First Addition
Plat 19-325 Platted 3/8/2005
- 1500520012 ㉙ R & T Miller, Ltd.
OR.179-2487 4/26/2005
3.333 ac

Last Revision: 12/20/2005
 T-10, R-5,
 4th. Qtr. lots 16, 17, 18
 27, 28, 29
 PAINT TWP.
 SCALE: 1" = 200'

LET IT BE KNOWN, THIS MAP HAS BEEN PREPARED AS A REFERENCE GUIDE TO PROPERTY OWNERS. WE BELIEVE THIS INFORMATION TO BE CORRECT AND CURRENT, HOWEVER, IT IS NOT INTENDED FOR ANY LEGAL USE, WHETHER IT BE IN SALES, TRANSFERS, TRADES, LEASES OF ANY TYPE, AND DOES NOT ACCEPT RESPONSIBILITY FOR ERRORS OF ANY NATURE OR OMISSIONS CONTAINED HEREIN.

