

M-17

M-22

H-04

M-16

H-03

M-15

M-20

H-02

Mohler View Farmstead, Ltd.  
OR.0247-1119 11/21/2013  
100.76 ac.  
1400447000

I. Lavonne LH, trustee  
OR.0177-2225 1/14/2005  
OR.0252-6784 7/10/2015  
75.079 ac.  
1400452000

T9 R8 1st Qtr  
Lot 14

T9 R8 1st Qtr  
Lot 1

Elizabeth A. Long  
OR.0208-0886 9/10/2013  
OR.0201-0281 5/29/2022  
24.921 ac. p.018-0075  
1400402001

T9 R8 4th Qtr  
Lot 2

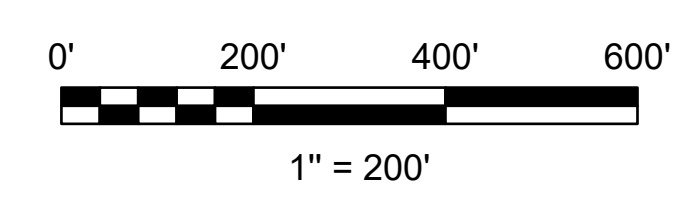
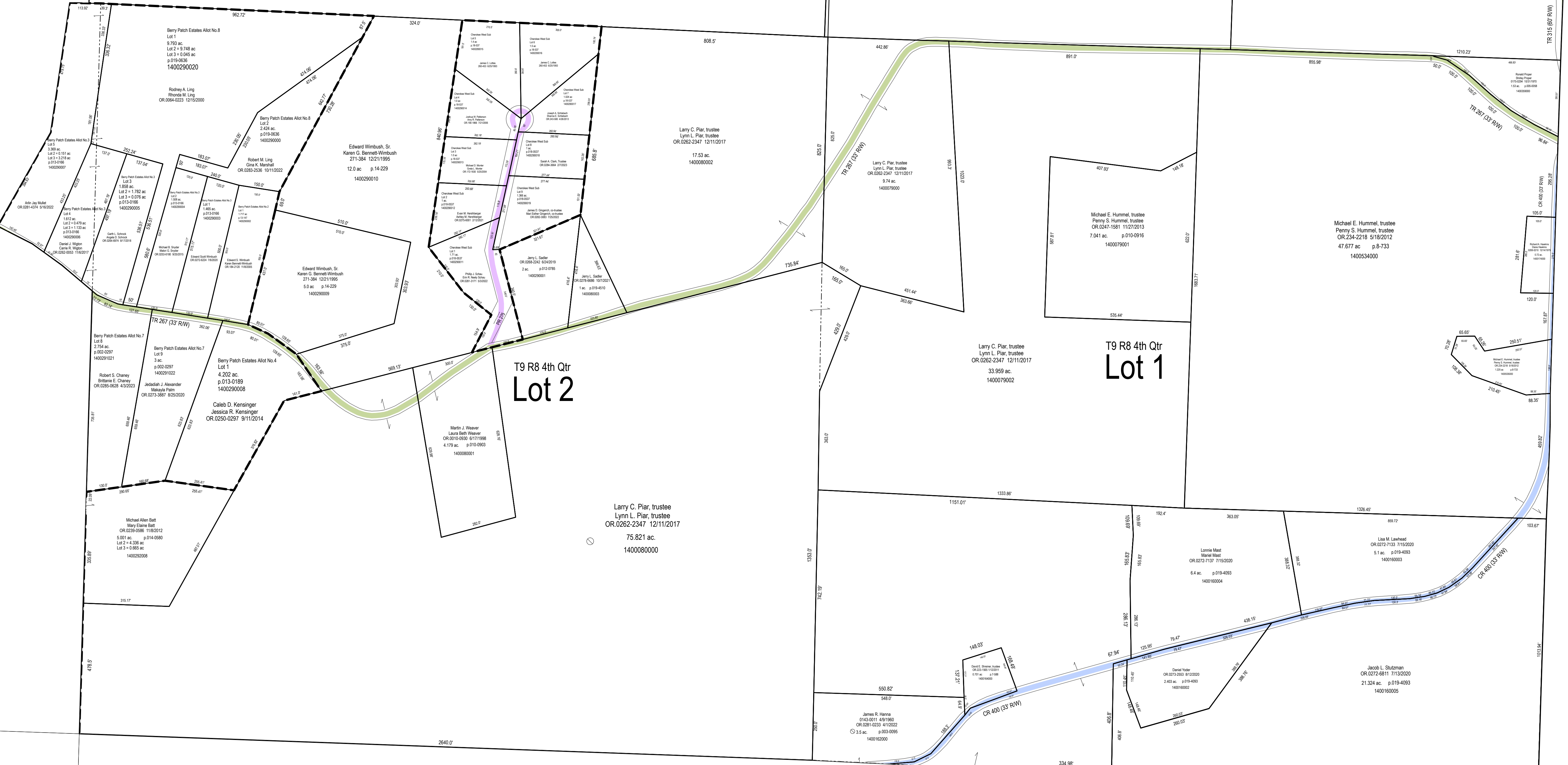
T9 R8 4th Qtr  
Lot 1

Larry C. Plar, trustee  
Lynn L. Plar, trustee  
OR.0262-2347 12/11/2017  
75.821 ac.  
1400060000

Larry C. Plar, trustee  
Lynn L. Plar, trustee  
OR.0262-2347 12/11/2017  
33.959 ac.  
1400079002

Michael E. Hummel, trustee  
Perry S. Hummel, trustee  
OR.0471-0381 1/27/2023  
7.041 ac. p.010-0916  
1400079001

Michael E. Hummel, trustee  
Perry S. Hummel, trustee  
OR.24-2245 5/16/2022  
47.677 ac. p.8-733  
1400034000



LET IT BE KNOWN, THIS MAP HAS BEEN PREPARED AS A REFERENCE GUIDE TO PROPERTY OWNERSHIP. WE BELIEVE THIS INFORMATION TO BE CORRECT AND CURRENT, HOWEVER IT IS NOT INTENDED FOR ANY LEGAL USE, WHETHER IT BE SALES, TRANSFERS, TRADES, LEASES OF ANY TYPE, ETC. AND DO NOT ACCEPT RESPONSIBILITY FOR ERRORS OF ANY NATURE OR OMISSIONS CONTAINED HEREIN.

S.F.T.  
new survey required for next transfer

**Lots 1 & 14, 1st Qtr.  
Lots 1, 2 & Pt 4, 4th Q  
T-9, R-8  
Monroe Twp.  
Holmes County, Ohio**  
**M-21**

Last Revision: 12/29/2023