

RP-16

RP-21

RP-26

M-26

M-27

M-18

M-12

M-17

Sec 23

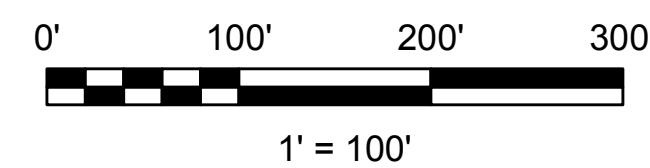
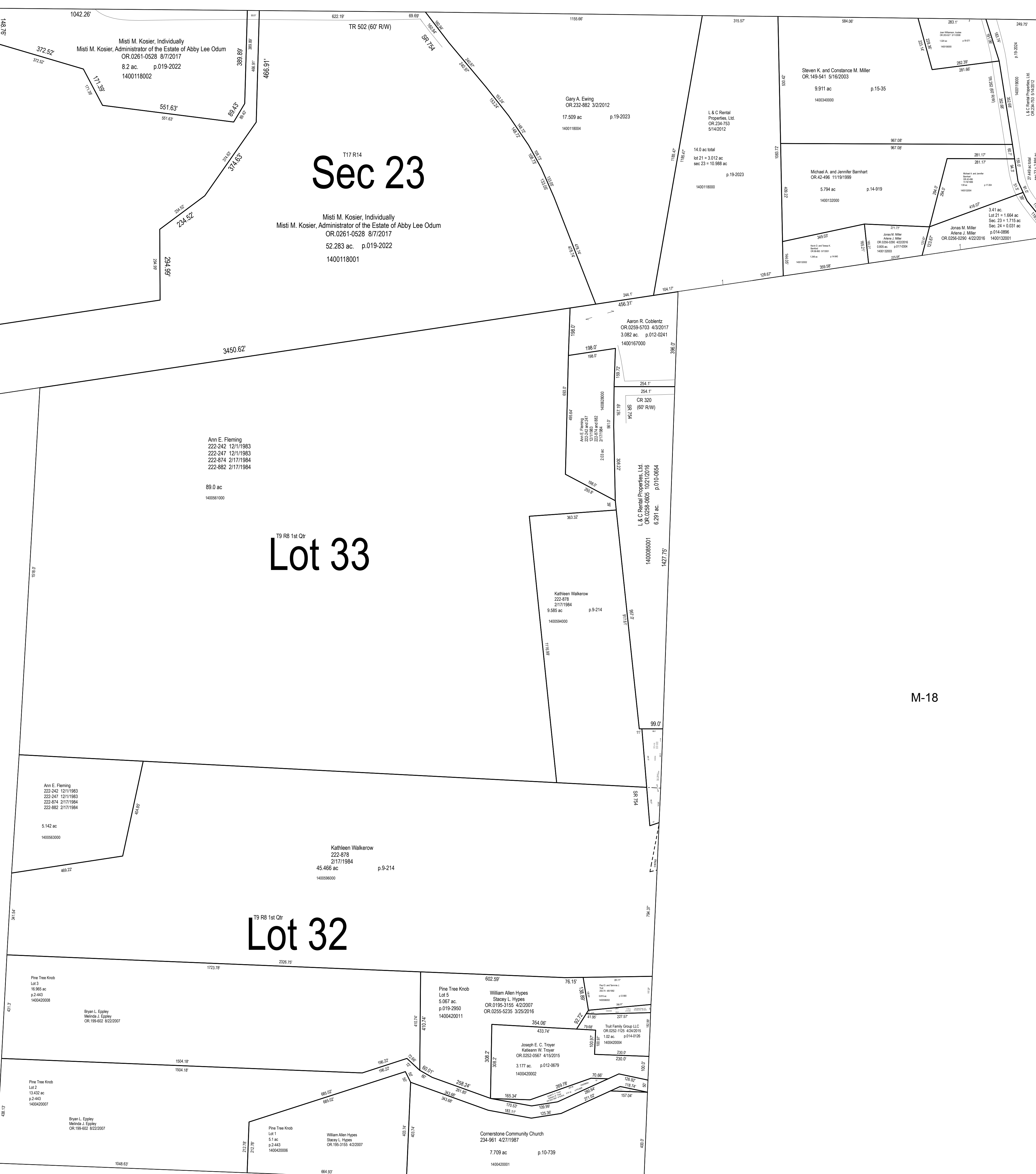
T17 R14
 Misti M. Kosier, Individually
 Misti M. Kosier, Administrator of the Estate of Abby Lee Odum
 OR 0261-0528 8/7/2017
 52.283 ac. p.019-2022
 1400118001

Lot 33

Ann E. Fleming
 222-242 12/1/1983
 222-247 12/1/1983
 222-874 2/17/1984
 222-882 2/17/1984
 89.0 ac
 1400061000

Lot 32

Kathleen Walkew
 222-878
 2/17/1984
 45.466 ac p.9-214
 1400060000



LET IT BE KNOWN, THIS MAP HAS BEEN PREPARED AS A REFERENCE GUIDE TO PROPERTY OWNERSHIP. WE BELIEVE THIS INFORMATION TO BE CORRECT AND CURRENT. HOWEVER IT IS NOT INTENDED FOR ANY LEGAL USE, WHETHER IT BE SALES, TRANSFERS, TRADES, LEASES OF ANY TYPE, ETC. AND DO NOT ACCEPT RESPONSIBILITY FOR ERRORS OF ANY NATURE OR OMISSIONS CONTAINED HEREIN.

S.F.T.
 new survey required for next transfer

Last Revision: 1/2/2018

Lots 32 & 33
1st Qtr., T-9, R-8
Sec. 23, T-17 R-14
Monroe Twp.
Holmes County, Ohio

M-13