

M-16

M-21

H-03

Lot 7

Lot 6

Lot 12

Lot 11

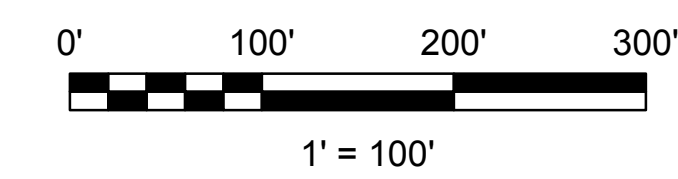
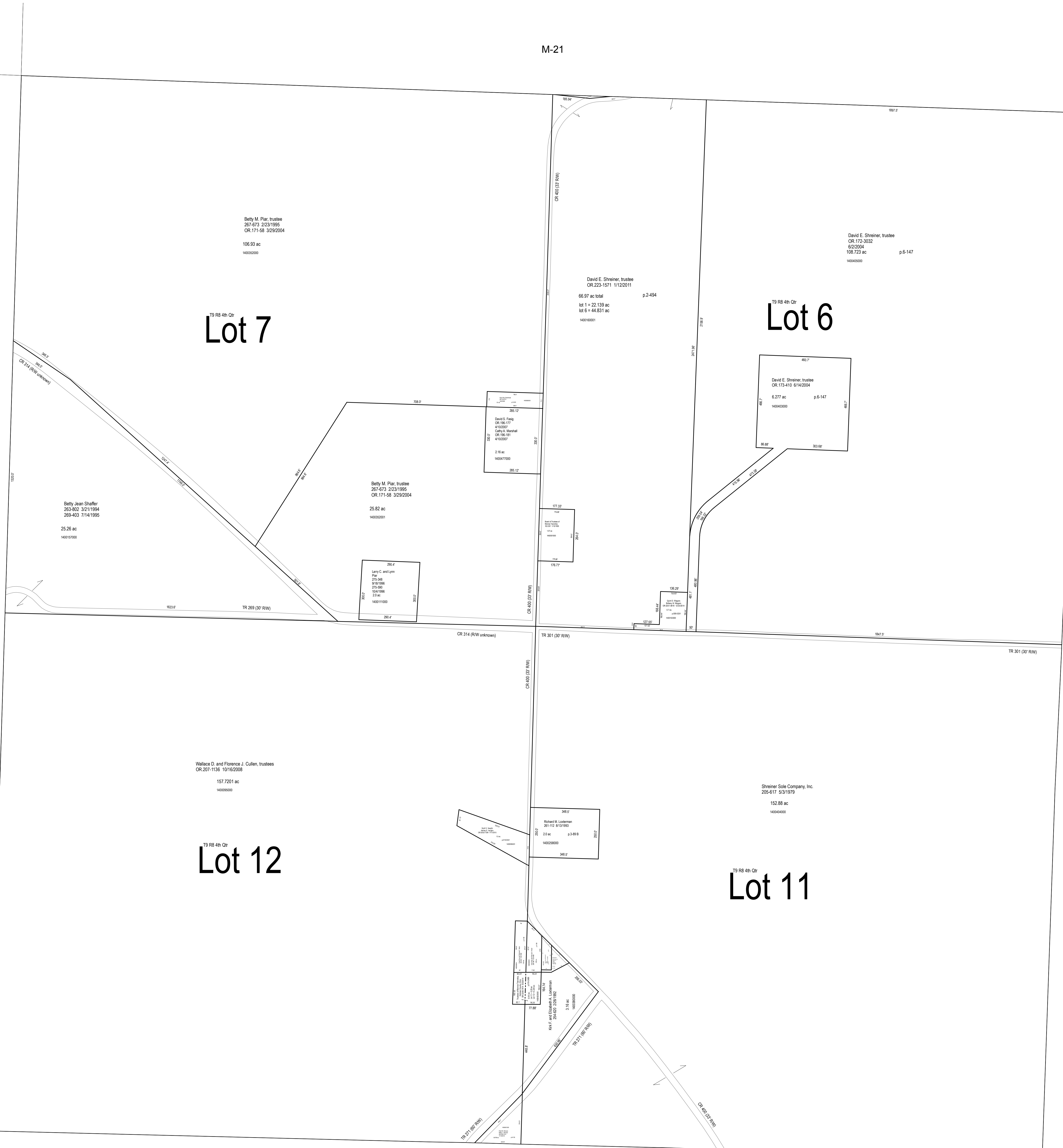
H-02

M-15

M-14

M-19

H-01



LET IT BE KNOWN, THIS MAP HAS BEEN PREPARED AS A REFERENCE GUIDE TO PROPERTY OWNERSHIP. WE BELIEVE THIS INFORMATION TO BE CORRECT AND CURRENT. HOWEVER, IT IS NOT INTENDED FOR ANY LEGAL USE, WHETHER IT BE SALES, TRANSFERS, TRADES, LEASES OF ANY TYPE, ETC. AND DO NOT ACCEPT RESPONSIBILITY FOR ERRORS OF ANY NATURE OR OMISSIONS CONTAINED HEREIN.

S.F.T.
new survey required
for next transfer

Last Revision: 12/31/2015



Lots 6, 7, 11 & 12
4th Qtr., T-9, R-8
Monroe Twp.
Holmes County, Ohio

M-20