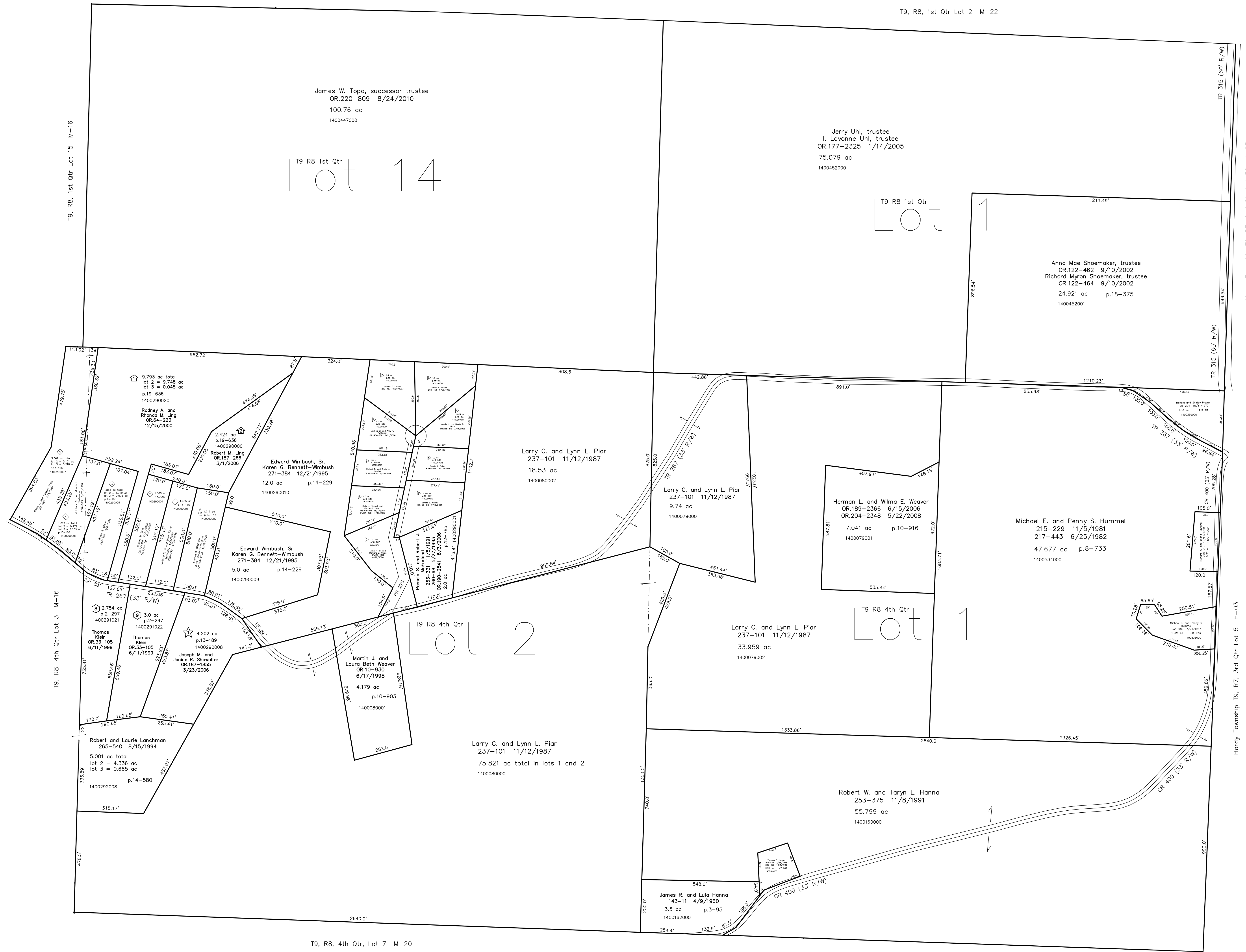


T9, R8, 1st Qtr Lot 13 M-22

T9, R8, 1st Qtr Lot 2 M-22



T9, R8, 1st Qtr Lot 15 M-16

T9, R8, 4th Qtr Lot 3 M-16

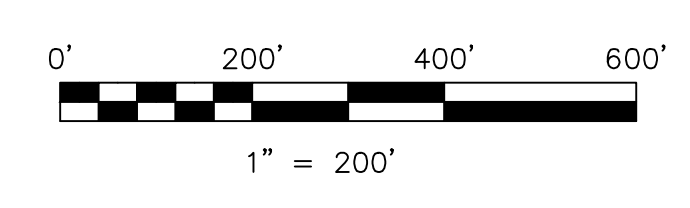
T9, R8, 4th Qtr, Lot 7 M-20

T9, R8, 4th Qtr, Lot 6 M-20

Hardy Township T9, R7, 2nd Qtr Lot 32 H-03

Hardy Township T9, R7, 3rd Qtr Lot 5 H-03

- ▲ Berry Patch Estates Allotment No.2  
Plat 13-147 Platted 1/23/1992
- ◆ Berry Patch Estates Allotment No.3  
Plat 13-166 Platted 8/13/1992
- ☆ Berry Patch Estates Allotment No.4  
Plat 13-189 Platted 5/24/1993
- Berry Patch Estates Allotment No.7  
Plat 2-297 Platted 8/8/1999
- ⬆ Berry Patch Estates Allotment No.8  
Plat 19-636 Platted 2/16/2006
- ▷ Cherokee West Subdivision  
Plat 18-537 Platted 2/28/2003  
OR.140-341 Restrictive Covenants



LET IT BE KNOWN, THIS MAP HAS BEEN PREPARED AS A REFERENCE GUIDE TO PROPERTY OWNERSHIP. WE BELIEVE THIS INFORMATION TO BE CORRECT AND CURRENT. HOWEVER IT IS NOT INTENDED FOR ANY LEGAL USE, WHETHER IT BE IN SALES, TRANSFERS, TRADES, LEASES OF ANY TYPE, ETC. AND DO NOT ACCEPT RESPONSIBILITY FOR ERRORS OF ANY NATURE OR OMISSIONS CONTAINED HEREIN.

new survey required for next transfer

Last Revision: 8/24/2010

**T-9, R-8,  
1st. Qtr. Lots 1,14  
4th. Qtr. Lots 1,2  
Monroe Twp.  
Holmes County, Ohio  
M-21**

