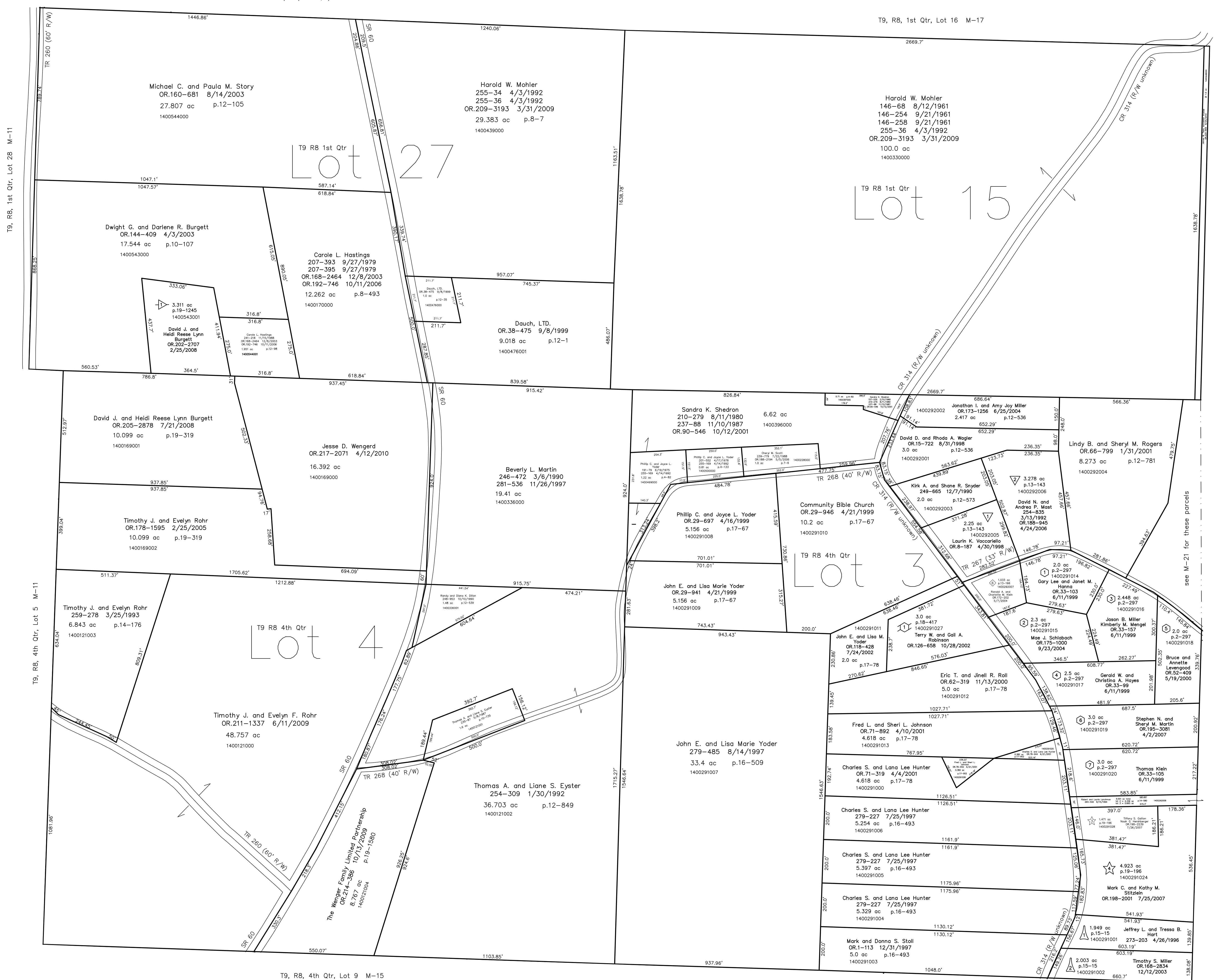


T9, R8, 1st Qtr, Lot 26 M-17

T9, R8, 1st Qtr, Lot 16 M-17



T9, R8, 1st Qtr, Lot 28 M-11

T9, R8, 4th Qtr, Lot 5 M-11

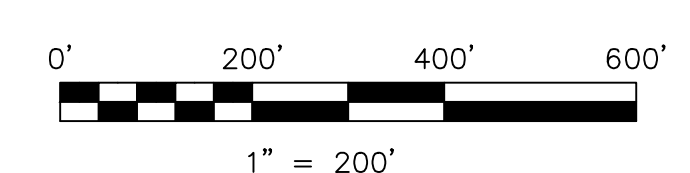
T9, R8, 1st Qtr, Lot 14 M-21

T9, R8, 4th Qtr, Lot 2 M-21

T9, R8, 4th Qtr, Lot 9 M-15

T9, R8, 4th Qtr, Lot 8 M-15

- ▽ Berry Patch Estates Allotment No.1
Plat 13-143 Platted 12/2/1991
- ◇ Berry Patch Estates Allotment No.3
Plat 13-166 Platted 8/13/1992
- ▲ Berry Patch Estates Allotment No.5
Plat 15-15 Platted 9/21/1993
- ☆ Berry Patch Estates Allotment No.6
Plat 19-196 Platted 9/16/2004
- Berry Patch Estates Allotment No.7
Plat 2-297 Platted 6/8/1999
- ▶ Country Lane Subdivision
Plat 19-1245 Platted 2/13/2008
- ◊ Peach Tree Knoll Subdivision
Plat 18-417 Platted 10/23/2002



LET IT BE KNOWN, THIS MAP HAS BEEN PREPARED AS A REFERENCE GUIDE TO PROPERTY OWNERSHIP. WE BELIEVE THIS INFORMATION TO BE CORRECT AND CURRENT. HOWEVER IT IS NOT INTENDED FOR ANY LEGAL USE, WHETHER IT BE IN SALES, TRANSFERS, TRAILS, LEASES OF ANY TYPE, ETC. AND DO NOT ACCEPT RESPONSIBILITY FOR ERRORS OF ANY NATURE OR OMISSIONS CONTAINED HEREIN.

new survey required for next transfer

Last Revision: 8/24/2010

**T-9, R-8,
1st. Qtr. Lots 15,27
4th. Qtr. Lots 3,4
Monroe Twp.
Holmes County, Ohio**

M-16

