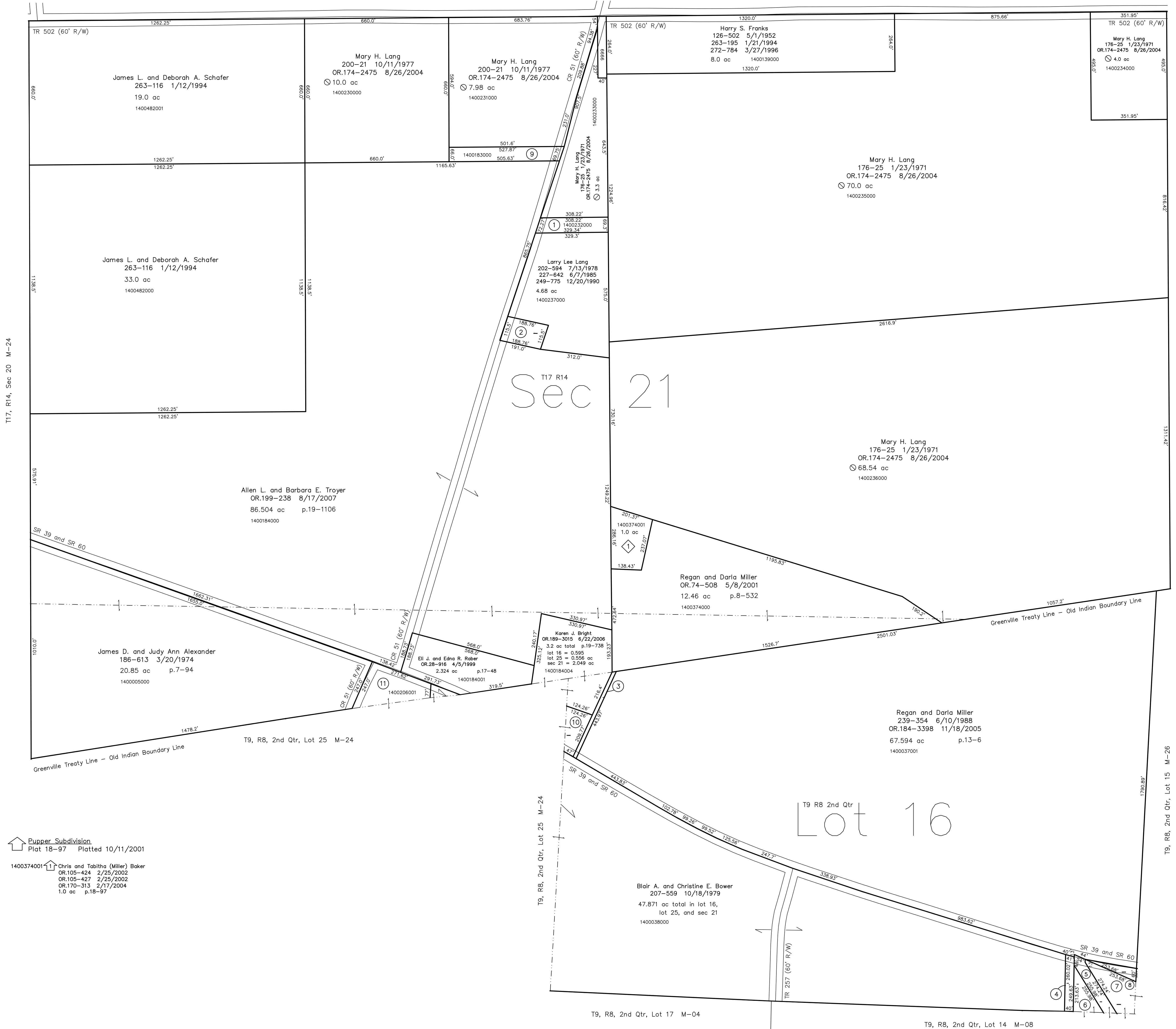
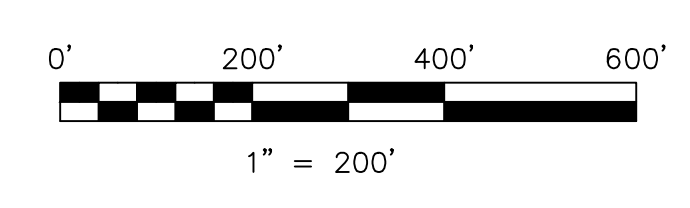


- 1400232000 (1) Mary H. Lang
176-25 1/23/1971
OR.174-2475 8/26/2004
0.5 ac
- 1400635000 (2) Methodist Episcopal Church?
aka Jones Meeting House?
D.V.13-528 1/1/1948
0.5 ac
- 1400625000 (3) Mary H. Lang
176-25 1/23/1971
OR.174-2475 8/26/2004
0.16 ac
- 1400368000 (4) John Dean and Carol Ann Slatos
239-502 6/28/1988
OR.208-314 12/5/2008
0.23 ac p.5-155
- 1400054000 (5) Joseph C. and Geraldine L. Carrigan
OR.9-696 5/26/1996
0.34 ac p.16-728
- 1400053001 (6) Joseph C. and Geraldine L. Carrigan
265-886 9/9/1994
0.341 ac p.14-236
- 1400053003 (7) Chris A. and Kathi D. Hamilton
OR.203-796 3/13/2008
0.648 ac p.16-242
- 1400037002 (8) Chris A. and Kathi D. Hamilton
OR.203-796 3/13/2008
0.165 ac p.19-1269
- 1400183000 (9) Mary H. Lang
OR.199-241 8/17/2007
0.783 ac p.19-1106
- 1400510001 (10) Thomas R. Bright
OR.189-3013 6/22/2006
0.4 ac p.19-728
- 1400206001 (11) Raymond H. and Patricia K. Miller
279-530 8/18/1997
1.08 ac p.6-108



Plat 18-97 Platted 10/11/2001
 1400374001 (11) Chris and Tabitha (Miller) Baker
 OR.105-424 2/25/2002
 OR.105-427 2/25/2002
 OR.170-313 2/17/2004
 1.0 ac p.18-97



LET IT BE KNOWN, THIS MAP HAS BEEN PREPARED AS A REFERENCE GUIDE TO PROPERTY OWNERSHIP. WE BELIEVE THIS INFORMATION TO BE CORRECT AND CURRENT. HOWEVER IT IS NOT INTENDED FOR ANY LEGAL USE, WHETHER IT BE IN SALES, TRANSFERS, TRUSTS, LEASES OF ANY TYPE, ETC. AND DO NOT ACCEPT RESPONSIBILITY FOR ERRORS OF ANY NATURE OR OMISSIONS CONTAINED HEREIN.

new survey required for next transfer

Last Revision: 12/5/2008
T-9, R-8, 2nd. Qtr. Lot 16
T-17, R-14, Sec. 21
Monroe Twp.
Holmes County, Ohio

M-25

T17, R14, Sec 20 M-24
 T17, R14, Sec 22 M-26
 T9, R8, 2nd Qtr, Lot 15 M-26