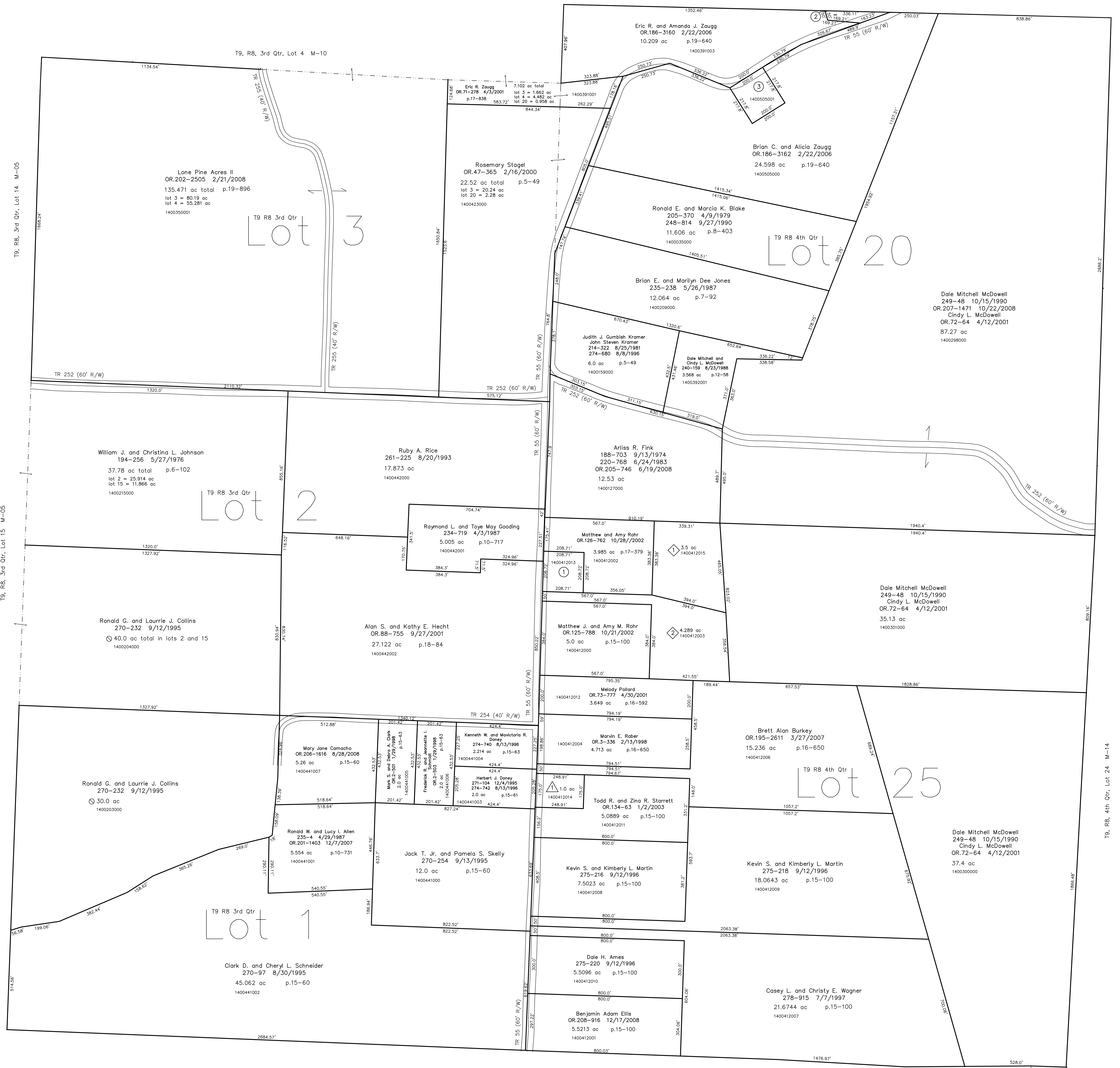


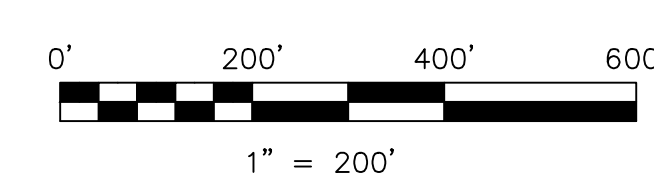
- 1400412013 ① Matthew and Amy Rohr  
OR.126-762 10/28/2002  
1.0 ac p.17-379
- 1400391002 ② Jack Aubrey Collins  
OR.186-3155 2/22/2006  
0.322 ac p.19-640
- 1400505001 ③ Ronnie J. and Denise E. Zaugg  
OR.186-3155 2/22/2006  
1.0 ac p.19-640



T9, R8, 3rd Qtr, Lot 14 M-05  
T9, R8, 3rd Qtr, Lot 15 M-05  
T9, R8, 3rd Qtr, Lot 16 M-05

T9, R8, 4th Qtr, Lot 19 M-14  
T9, R8, 4th Qtr, Lot 24 M-14

- △ Beckett Family Acre Subdivision  
Plat 17-548 Platted 7/7/2000
- 1400412014 △ Wanda F. Grant  
OR.157-65 7/17/2003  
1.0 ac p.17-548
- ◇ Shoe-Brooke Subdivision  
Plat 18-897 Platted 2/25/2004
- 1400412015 ◇ Edward A. and Rachel Miller  
OR.173-573 6/18/2004  
3.5 ac p.18-897
- 1400412003 ◇ Edward A. and Rachel Miller  
OR.173-573 6/18/2004  
4.269 ac p.18-897



LET IT BE KNOWN, THIS MAP HAS BEEN PREPARED AS A REFERENCE GUIDE TO PROPERTY OWNERSHIP. WE BELIEVE THIS INFORMATION TO BE CORRECT AND CURRENT. HOWEVER IT IS NOT INTENDED FOR ANY LEGAL USE, WHETHER IT BE IN SALES, TRANSFERS, TRAILS, LEASES OF ANY TYPE, ETC. AND DO NOT ACCEPT RESPONSIBILITY FOR ERRORS OF ANY NATURE OR OMISSIONS CONTAINED HEREIN.

new survey required for next transfer

Last Revision: 12/17/2008

**T-9, R-8,  
3rd. Qtr. Lots 1,2,3  
4th. Qtr. Lots 20,25  
Monroe Twp.  
Holmes County, Ohio**

**M-09**

Killbuck Township T8, R8, Sec.2 K-10