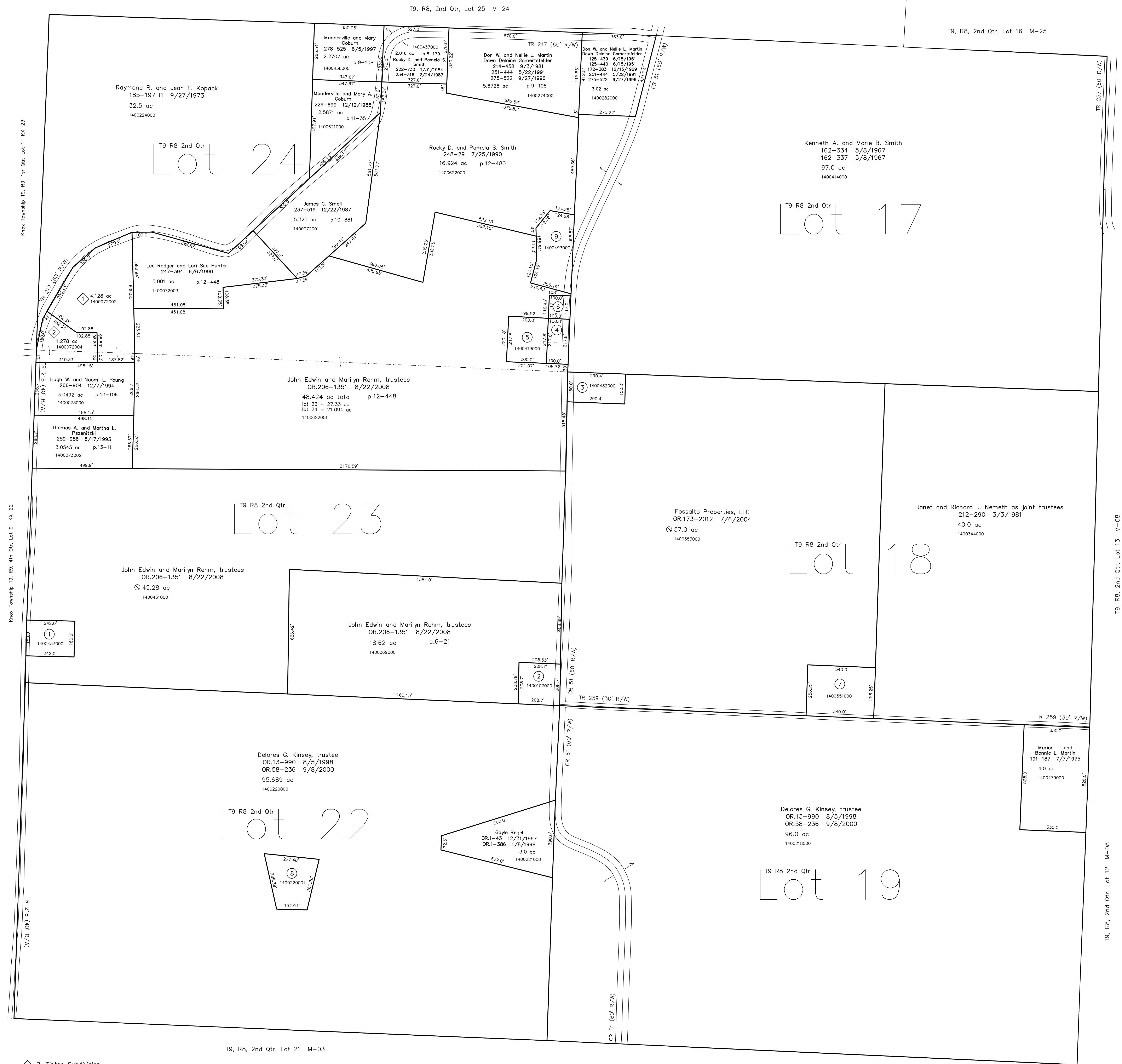
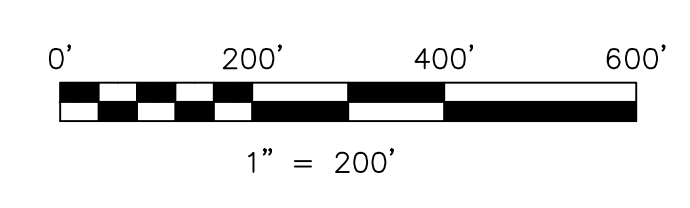


- 1400433000 ① Richard B. and Teresa A.W. Stoner  
200-803 1/11/1978  
1.0 ac p.8-135
- 1400107000 ② Lewis S. Sr. and Betty Jo Crawford  
OR.167-3267 11/6/2003  
OR.184-2528 11/10/2005  
1.0 ac p.18-790
- 1400432000 ③ Eric A. and Laura R. Pierce  
OR.150-308 5/23/2003  
OR.151-103 5/30/2003  
1.0 ac p.7-786
- 1400144000 ④ Keith D. and Goy A. Snyder  
218-194 9/15/1982  
0.5 ac p.5-173
- 1400419000 ⑤ Keith Duane Snyder  
Gay Ann Gloggs  
200-844 1/17/1978  
1.0 ac p.8-140
- 1400146000 ⑥ Timothy M. and Lori J. Boyd  
273-84 4/18/1996  
0.268 ac
- 1400551000 ⑦ David P. Lydic  
221-343 8/25/1983  
2.0 ac p.7-786
- 1400220001 ⑧ Delores G. Kinsey, trustee  
OR.13-990 8/5/1998  
OR.58-236 9/8/2000  
1.31 ac p.16-736
- 1400493000 ⑨ Michael E. and Andrea M. Rogers  
OR.76-83 5/25/2001  
1.5897 ac p.9-108



- ① R. Tipton Subdivision  
Plat 17-885 Platted 6/1/2001
- 1400072002 ① Pearl E. Masters  
OR.186-2584 2/14/2006  
4.128 ac p.17-885
- 1400072004 ② Pearl E. Masters  
OR.186-2585 2/14/2006  
1.278 ac p.17-885



LET IT BE KNOWN, THIS MAP HAS BEEN PREPARED AS A REFERENCE GUIDE TO PROPERTY OWNERSHIP. WE BELIEVE THIS INFORMATION TO BE CORRECT AND CURRENT. HOWEVER IT IS NOT INTENDED FOR ANY LEGAL USE, WHETHER IT BE IN SALES, TRANSFERS, TRADES, LEASES OF ANY TYPE, ETC. AND DO NOT ACCEPT RESPONSIBILITY FOR ERRORS OF ANY NATURE OR OMISSIONS CONTAINED HEREIN.

new survey required for next transfer

Last Revision: 8/22/2008  
**T-9, R-8, 2nd. Qtr.**  
**Lots 17,18,19,22,23,24**  
**Monroe Twp.**  
**Holmes County, Ohio**

**M-04**

T9, R8, 2nd Qtr, Lot 14 M-08  
T9, R8, 2nd Qtr, Lot 13 M-08  
T9, R8, 2nd Qtr, Lot 12 M-08