

Berry Patch Estates Allotment No.1
Plat 13-143 Platted 12/2/1991

VACCARELLO LAURIN K.
OR.0008-187 4/30/1998
2.25 ac
1400292006 David N. and Andrea P. Mast
294-835 3/13/1993
OR.188-945 4/24/2006
3.278 ac p.13-143

Berry Patch Estates Allotment No.3
Plat 13-166 Platted 8/13/1992

BLACK BRYAN A.
263-981 4/6/1994
0.076 ac
STUTZMAN MATTHEW S. AND MARCIA L.
296-893 8/26/1992
1.133 ac
STEIN BRENT L. AND DARLENE
265-467 8/8/1994
3.218 ac
1400292007 KLEN RONALD A. AND CHARLOTTE M.
OR.0172-202 5/7/2004
1.033 ac

Berry Patch Estates Allotment No.5
Plat 15-15 Platted 9/21/1993

HART JEFFREY L. AND TRESSA B.
273-203 4/26/1996
1.949 ac
MILLER TIMOTHY S.
OR.0168-2834 12/12/2003
2.003 ac

Berry Patch Estates Allotment No.6 Replat
Plat 19-593 Platted 12/30/2005

Nicole Horn
OR.185-3434 1/5/2006
1.087 ac
Nicole Horn
OR.185-3434 1/5/2006
5.307 ac

Berry Patch Estates Allotment No.8
Plat 19-636 Platted 2/16/2006

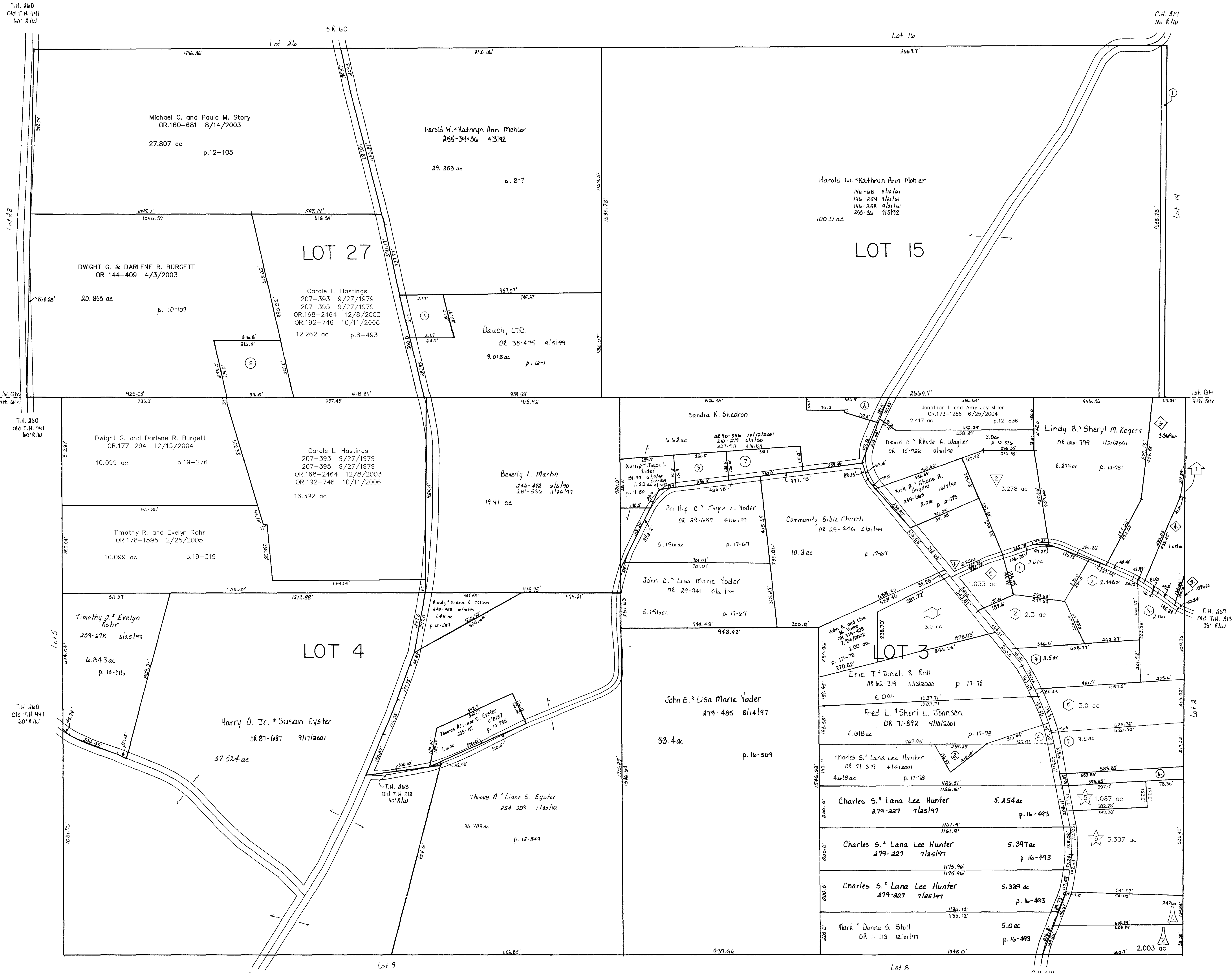
Rodney A. and Rhonda M. Ling
OR.64-223 12/15/2000
9.793 ac p.19-636

Berry Patch Estates Allotment No.7
Plat 2-297 Platted 6/8/1999

HANNA GARY LEE AND JANET M.
OR.0033-103 6/11/1999
2.0 ac
SCHLABACH MAE J.
OR.0175-1000 9/23/2004
2.3 ac
MILLER JASON B.
MENDEL KIMBERLY M.
OR.0033-157 6/11/1999
2.448 ac
HAYES GERALD W. AND CHRISTINA A.
OR.0033-99 6/11/1999
2.5 ac
LEVENGOOD BRUCE AND ANNETTE
OR.0052-408 5/19/2000
2.0 ac
Citibank, Federal Savings Bank
OR.192-3021 11/2/2006
3.0 ac p.2-297
KLEN THOMAS
OR.0033-105 6/11/1999
3.0 ac

Peach Tree Knoll Subdivision
Plat 18-417 Platted 10/23/2002

ROBINSON TERRY W. AND GAIL A.
OR.0126-658 10/28/2002
3.0 ac



- 1 FETTER VIVA A. TRUSTEE
OR.0003-783 2/23/1998
1.0 ac
- 2 SHEDRON SANDRA K.
157-535 2/10/1966
210-279 8/11/1980
237-88 11/10/1987
OR.0090-546 10/12/2001
0.71 ac p.4-82
- 3 YODER PHILLIP C. AND JOYCE L.
201-552 4/17/1978
255-169 4/14/1992
0.81 ac p.4-133
- 4 HUNTER CHARLES S. AND LANA LEE
OR.0078-944 6/21/2001
0.382 ac p.17-902
- 5 DAUCH LTD.
OR.0038-475 9/8/1999
1.0 ac p.12-35
- 6 LANCHMAN ROBERT AND LAURIE
265-540 8/15/1994
0.863 ac p.1-590
- 1400228000 Cheryl M. Scott
OR.78-942 6/21/2001
OR.188-2194 5/5/2006
1.0 ac p.7-6
- 8 JOHNSON FRED L. AND SHERI L.
OR.0078-942 6/21/2001
0.382 ac p.17-902

1400544001 Carole L. Hastings
241-218 11/15/1988
OR.168-2464 12/8/2003
OR.192-746 10/11/2006
1.0 ac p.12-98

Last Revision: 11/2/2006

T-9, R-8
1st. Qtr. lots 15, 27
4th. Qtr. lots 3, 4
MONROE TWP.
SCALE: 1" = 200'

LET IT BE KNOWN, THIS MAP HAS BEEN PREPARED AS A REFERENCE GUIDE TO PROPERTY OWNERSHIP. WE BELIEVE THIS INFORMATION TO BE CORRECT AND CURRENT, HOWEVER, IT IS NOT INTENDED FOR ANY LEGAL USE, WHETHER IT BE IN SALES, TRANSFERS, TRADES, LEASES OF ANY TYPE, ETC. AND DO NOT ACCEPT RESPONSIBILITY FOR ERRORS OF ANY NATURE OR OMISSIONS CONTAINED HEREIN.

M-16