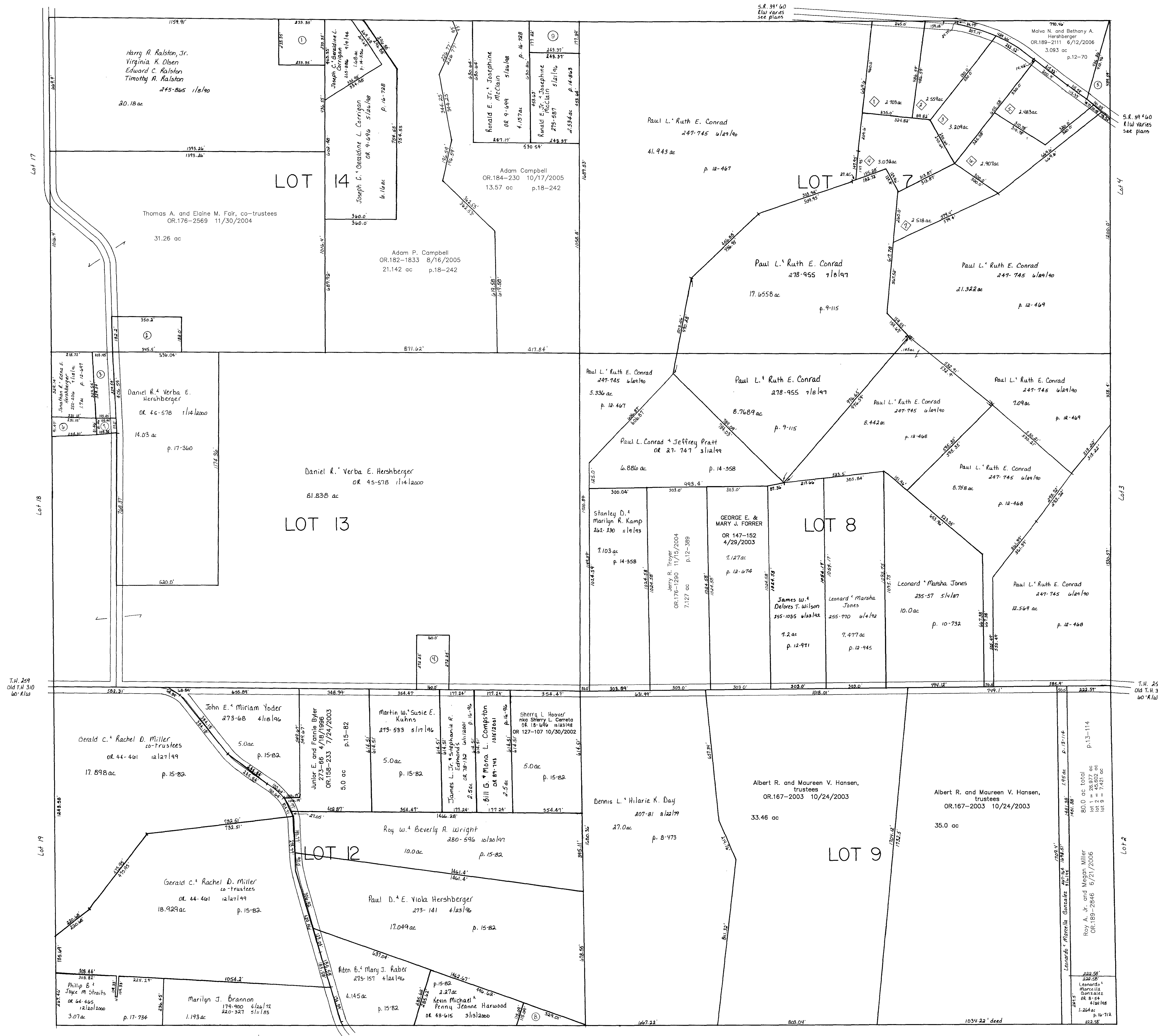


T.H. 257
Old T.H. 452
60' R/W

S.R. 39' 60'
Flow varies
see plans

S.R. 39' 60'
Flow varies
see plans



- ① SLATES JOHN DEAN AND CAROL ANN
239-502 6/28/1988
1.25 ac p. 15-155
- ② SHEDRON RICHARD E.
148-47 5/21/1962
242-525 3/9/1989
1.25 ac p. 3-438
- ③ HERSHBERGER JONATHAN R.
EDNA E. BYLER
229-488 11/25/1985
237-596 12/29/1987
252-204 7/18/1991
0.782 ac p. 12-697
- ④ KUHN'S MARTIN W. AND SUSAN
229-490 11/25/1985
1.0 ac p. 10-497
- ⑤ MCCULLOUGH BEVERLY ANN
221-399 8/31/1983
0.595 ac p. 7-504
- ⑥ MILLER REUBEN E. AND ESTHER E. BYLER
252-29 7/21/1991
271-51 11/28/1995
0.462 ac p. 12-697
- ⑦ MILLER REUBEN E. AND ESTHER E. BYLER
229-488 11/25/1985
237-596 12/29/1987
252-208 7/18/1991
271-51 11/28/1995
0.188 ac p. 12-697

- ⑧ MARTIN, JOHN R.
RIES, HELEN P. AND BRIAN C.
233-221 4/29/1996
0.435 ac p. 15-82
- ⑨ CHARLES L. JR. AND MELISSA M. BOUGHTMAN
1400055000
OR. 186-3364 2/24/2006
0.99 ac p. 16-728

◆ The Graven Form Subdivision No. 1
Plat 2-210 Plotted 12/28/1988

- ① CONRAD PAUL L. AND RUTH E.
247-894 7/16/1990
2.703 ac
- ② CONRAD PAUL L. AND RUTH E.
OR. 0098-370 1/3/2002
2.559 ac
- ③ CONRAD PAUL L. AND RUTH E.
OR. 0098-370 1/3/2002
3.209 ac
- ④ CONRAD PAUL L. AND RUTH E.
OR. 0098-370 1/3/2002
3.032 ac
- ⑤ CONRAD PAUL L. AND RUTH E.
247-745 6/29/1990
2.483 ac
- ⑥ CONRAD PAUL L. AND RUTH E.
247-745 6/29/1990
2.907 ac
- ⑦ CONRAD PAUL L. AND RUTH E.
247-745 6/29/1990
2.518 ac

T-9, R-8, 2nd. Qtr.
lots 7, 8, 9, 12, 13, 14
MONROE TWP.

SCALE: 1" = 200'

Last Revision: 6/21/2006

LET IT BE KNOWN, THIS MAP HAS BEEN PREPARED AS A REFERENCE GUIDE TO PROPERTY OWNERSHIP. WE BELIEVE THIS INFORMATION TO BE CORRECT AND CURRENT, HOWEVER, IT IS NOT INTENDED FOR ANY LEGAL USE, WHETHER IT BE IN SALES, TRANSFERS, TRADES, LEASES OF ANY TYPE, ETC. AND DO NOT ACCEPT RESPONSIBILITY FOR ERRORS OF ANY NATURE OR OMISSIONS CONTAINED HEREIN.

M-88