

**Berry Patch Estates Allotment No.1**  
Plat 13-143 Platted 12/2/1991

- 1 VACCARIELLO LAURIN K.  
OR.0008-187 4/30/1998  
2.25 ac
- 2 MAST DAVID N.  
294-835 3/13/1992  
3.278 ac

**Berry Patch Estates Allotment No.3**  
Plat 13-166 Platted 8/13/1992

- 1 BLACK BRYAN A.  
263-981 4/6/1994  
0.076 ac
- 2 STUTZMAN MATTHEW S. AND MARCIA L.  
236-893 8/26/1992  
1.133 ac
- 3 STEIN BRENT L. AND DARLENE  
265-467 8/8/1994  
3.218 ac
- 4 KLEN RONALD A. AND CHARLOTTE M.  
OR.0172-202 5/7/2004  
1.033 ac

**Berry Patch Estates Allotment No.5**  
Plat 15-15 Platted 9/21/1993

- 1 HART JEFFREY L. AND TRESSA B.  
273-203 4/26/1996  
1.949 ac
- 2 MILLER TIMOTHY S.  
OR.0168-2834 12/12/2003  
2.003 ac

**Berry Patch Estates Allotment No.6 Replat**  
Plat 19-593 Platted 12/30/2005

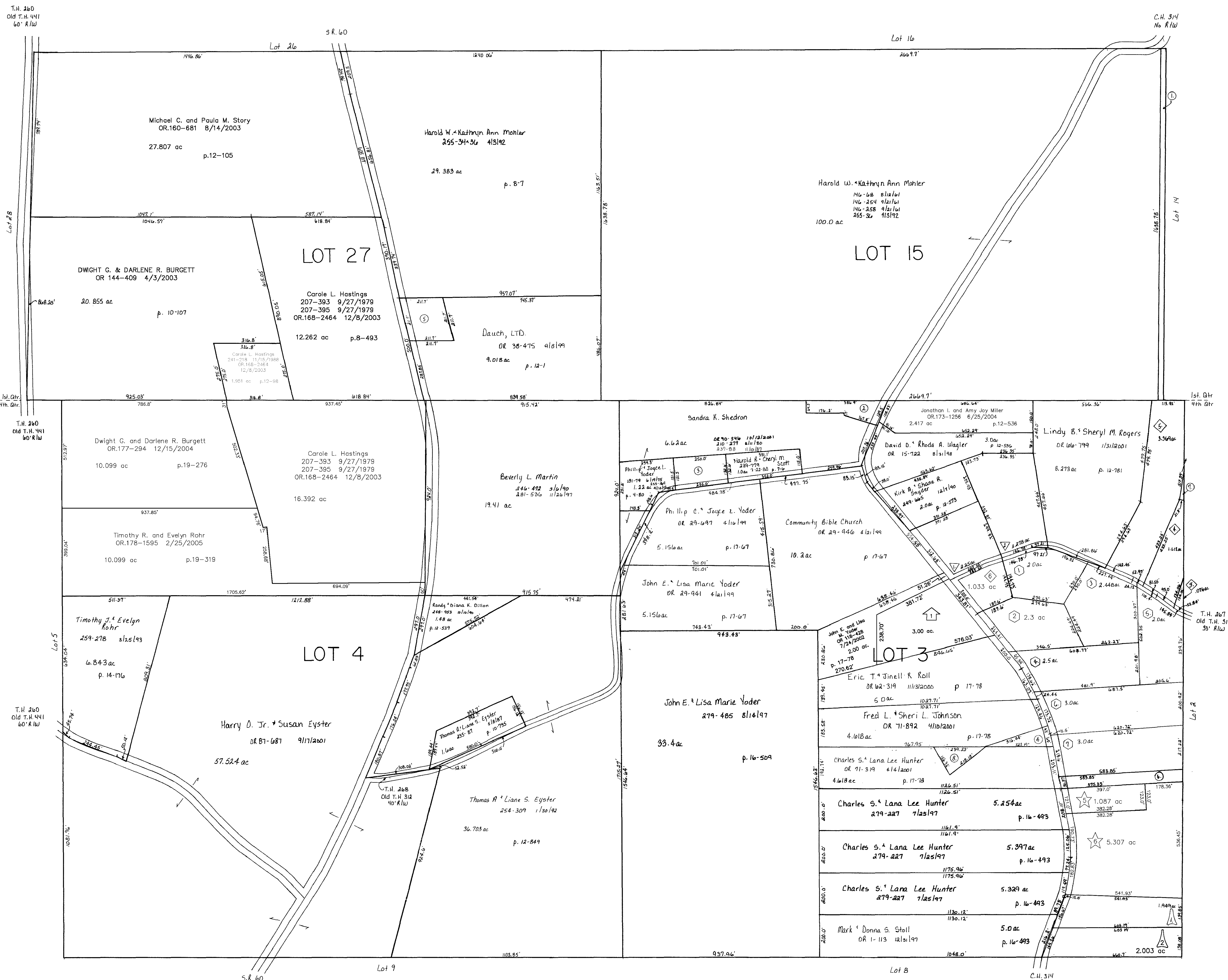
- 1 Nicole Horn  
OR.185-3434 1/5/2006  
1.087 ac
- 2 Nicole Horn  
OR.185-3434 1/5/2006  
5.307 ac

**Berry Patch Estates Allotment No.7**  
Plat 2-297 Platted 6/8/1999

- 1 HANNA GARY LEE AND JANET M.  
OR.0033-103 6/11/1999  
2.0 ac
- 2 SCHLABACH MAE J.  
OR.0175-1000 9/23/2004  
2.3 ac
- 3 MILLER JASON B.  
MENDEL, KIMBERLY M.  
OR.0033-157 6/11/1999  
2.448 ac
- 4 HAYES GERALD W. AND CHRISTINA A.  
OR.0033-99 6/11/1999  
2.5 ac
- 5 LEVENGOOD BRUCE AND ANNETTE  
OR.0052-408 5/19/2000  
2.0 ac
- 6 KELLY CHARLES B. AND DONNA J.  
OR.0062-369 11/13/2000  
3.0 ac
- 7 KLEN THOMAS  
OR.0033-105 6/11/1999  
3.0 ac

**Peach Tree Knoll Subdivision**  
Plat 18-417 Platted 10/23/2002

- 1 ROBINSON TERRY W. AND GAIL A.  
OR.0126-658 10/28/2002  
3.0 ac



- 1 FETTER VIVA A. TRUSTEE  
OR.0003-783 2/23/1998  
1.0 ac
- 2 SHEDRON SANDRA K.  
157-535 2/10/1986  
210-279 8/11/1980  
237-88 11/10/1987  
OR.0090-546 10/12/2001  
0.71 ac p.4-82
- 3 YODER PHILLIP C. AND JOYCE L.  
201-552 4/17/1978  
255-169 4/14/1992  
0.81 ac p.4-133
- 4 HUNTER CHARLES S. AND LANA LEE  
OR.0078-944 6/21/2001  
0.382 ac p.17-902
- 5 DAUCH LTD.  
OR.0038-475 9/8/1999  
1.0 ac p.12-35
- 6 LANCHMAN ROBERT AND LAURIE  
265-540 8/15/1994  
0.865 ac p.11-590
- 7 LING RODNEY A. AND RHONDA M.  
OR.0064-223 12/15/2000  
0.045 ac p.15-119
- 8 JOHNSON FRED L. AND SHERI L.  
OR.0078-942 6/21/2001  
0.382 ac p.17-902

Last Revision: 1/5/2006

T-9, R-8  
1st. Qtr. lots 15, 27  
4th. Qtr. lots 3, 4  
MONROE TWP.  
SCALE: 1" = 200'

LET IT BE KNOWN, THIS MAP HAS BEEN PREPARED AS A REFERENCE GUIDE TO PROPERTY OWNERSHIP. WE BELIEVE THIS INFORMATION TO BE CORRECT AND CURRENT, HOWEVER, IT IS NOT INTENDED FOR ANY LEGAL USE, WHETHER IT BE IN SALES, TRANSFERS, TRADES, LEASES OF ANY TYPE, ETC. AND DO NOT ACCEPT RESPONSIBILITY FOR ERRORS OF ANY NATURE OR OMISSIONS CONTAINED HEREIN.

M-16