

William Johnson
OR.170-1407 3/1/2004
3.14 ac p.17-396

William Johnson
OR.170-1407 3/1/2004
41.373 ac total p.17-396

38.478 ac
2.895 ac

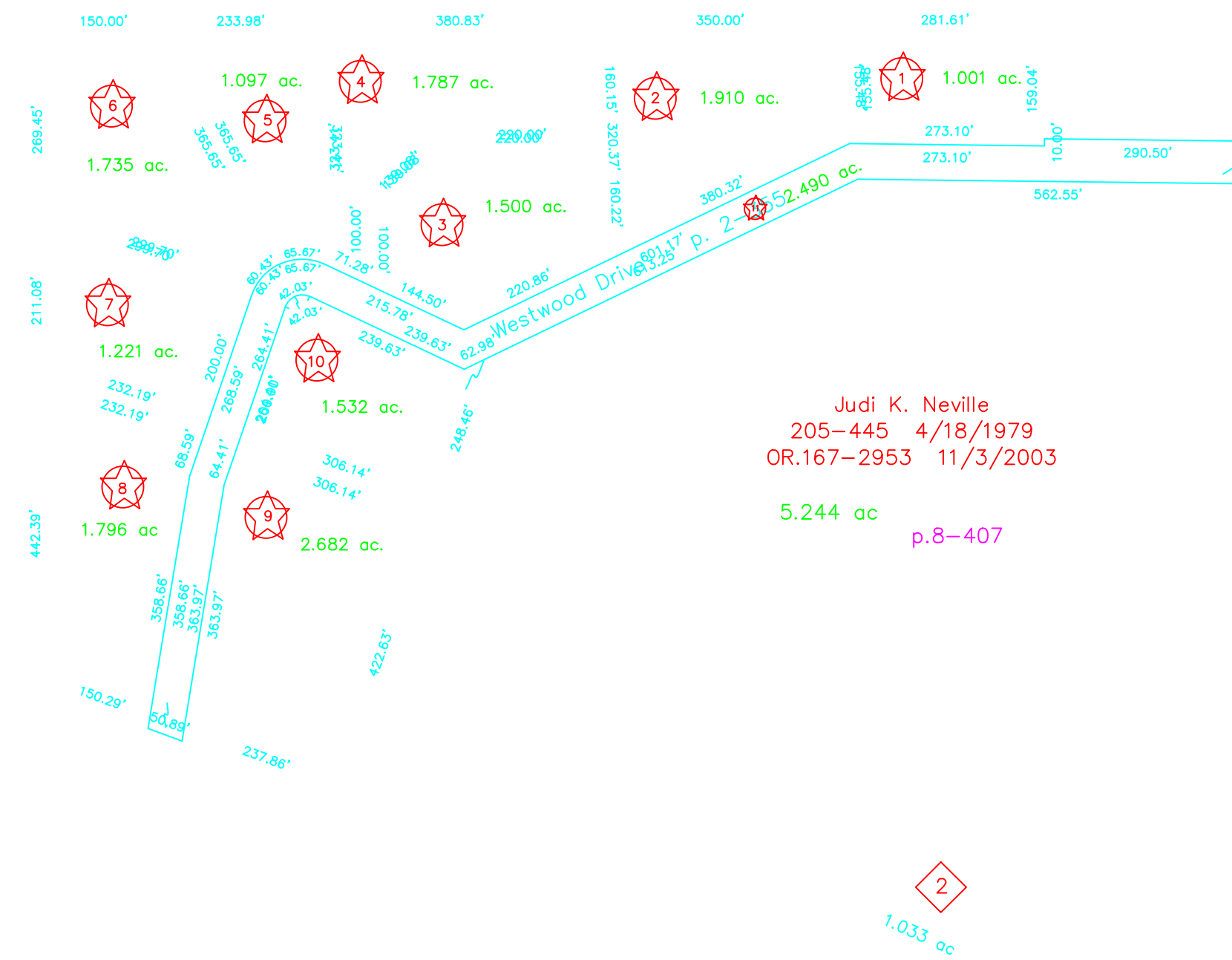
Esther M. & James D. Steele, Ima Geon Franks, Ruth Ann Brenly
120-483 4/26/1948
193-250 2/27/1976
255-659 5/27/1992

2.0 ac

2.0 ac

Charles M. and Gale A. Lenzo
OR 44-456 12/27/1999
OR 45-60 1/6/2000
OR 67-4 2/1/2001
OR 106-224 3/7/2002
OR 136-166 1/22/2003

Kent P. and Sheri L. McGovern
OR 44-458 12/27/1999
OR 45-59 1/6/2000
OR 67-6 2/1/2001
OR 106-226 3/7/2002
OR 136-168 1/22/2003

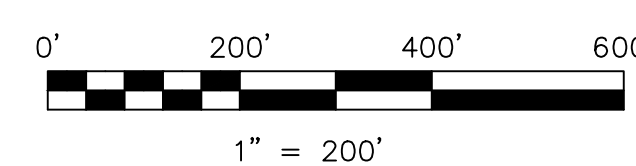


Judith K. Neville
205-445 4/18/1979
OR.167-2953 11/3/2003
5.244 ac p.8-407

Robert A. and Sherry L. Ewing
OR.169-3247 2/3/2004
3.086 ac p.8-241

1.033 ac

Westwood Subdivision M-17A
P. 2-355 12/27/2002



LET IT BE KNOWN, THIS MAP HAS BEEN PREPARED AS A REFERENCE GUIDE TO PROPERTY OWNERSHIP. WE BELIEVE THIS INFORMATION TO BE CORRECT AND CURRENT, HOWEVER IT IS NOT INTENDED FOR ANY LEGAL USE, WHETHER IT BE IN SALES, TRANSFERS, TRADES, LEASES OF ANY TYPE, ETC., AND DO NOT ACCEPT RESPONSIBILITY FOR ERRORS OF ANY NATURE OR OMISSIONS CONTAINED HEREIN.



**T-9, R-8, 1st QTR.
LOTS 16, 17, 18, 24, 25, 26
MONROE TWP.
HOLMES COUNTY, OHIO**

M-17