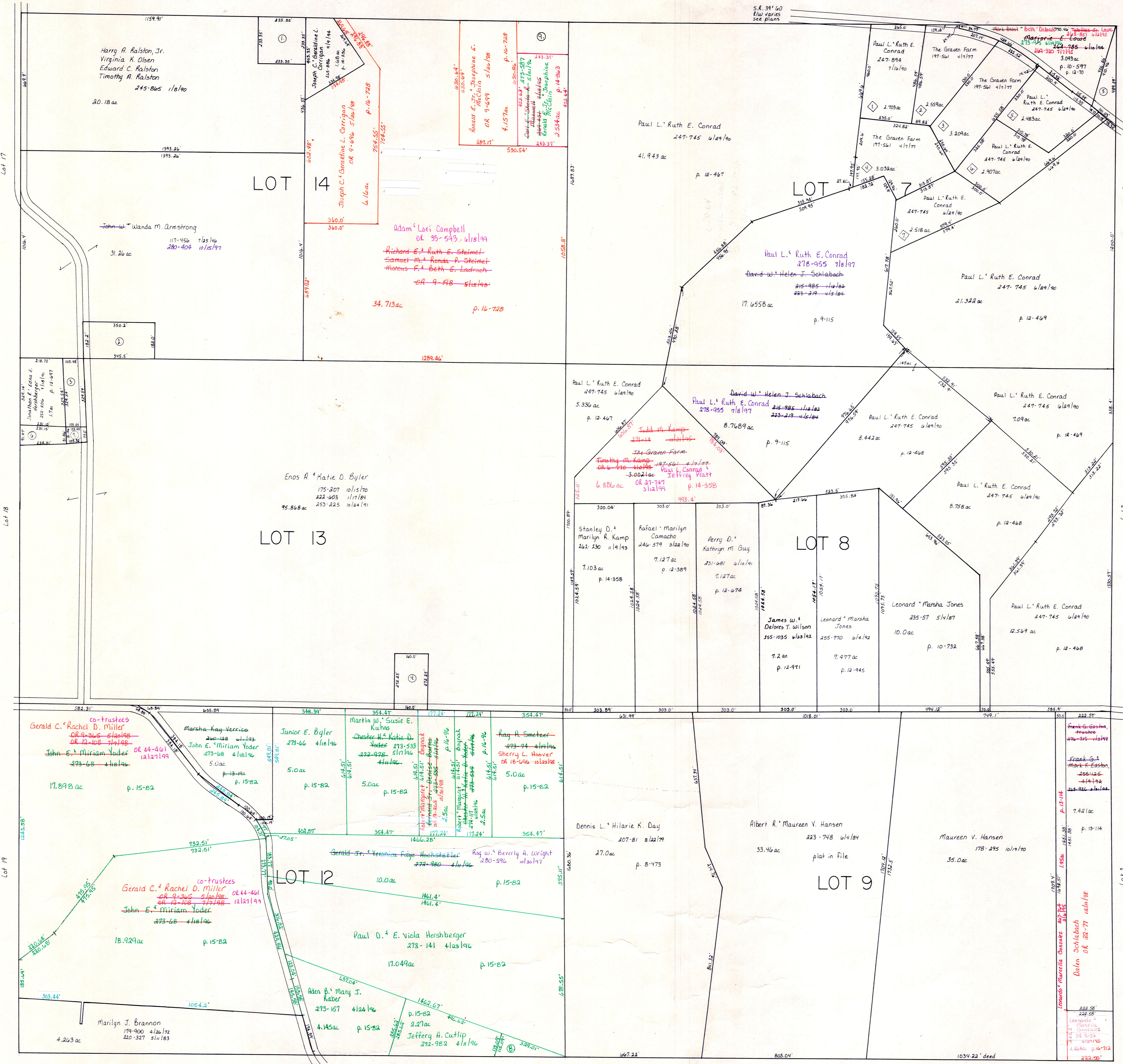


T.H. 257
Old T.H. 452
60' R/W

S.R. 39' 40"
R/W varies
see plans

The Graven Farm Allotment No. 1
plat 2-210 1/2 acres

S.R. 39' 40"
R/W varies
see plans



- ① John Dean + Carol Ann States 239-508 4/28/88 1.25 ac p. 5-155
- ② Richard E. Shelton 198-27 5/6/82, 242-525 2/1/89 1.25 ac p. 3-43 B
- ③ Jonathan R. + Edna (Byler) 229-788 11/25/85 .782 ac p. 12-497
- ④ Martin W. Susan Kuhns 229-490 11/25/85 1.0 ac p. 10-497
- ⑤ Beverly Ann McCullough 221-399 8/15/85 .595 ac p. 7-504
- ⑥ ~~Richard E. Byler 252-28 7/2/81 .462 ac p. 12-497~~
- ⑦ ~~Esther E. Byler 252-488 1/25/85, 237-596 12/29/87 1.88 ac p. 12-497~~
- ⑧ John R. Martin; Helen D. Brian C. Ries 273-221 4/29/96 .435 ac p. 15-82
- ⑨ Lydia J. Brownlee 116-440 3/1/46 .756 ac

T-9, R-8, 2nd. Qtr.
lots 7, 8, 9, 12, 13, 14
MONROE TWP.
SCALE: 1" = 200'

LET IT BE KNOWN, THIS MAP HAS BEEN PREPARED AS A REFERENCE GUIDE TO PROPERTY OWNERSHIP. WE BELIEVE THIS INFORMATION TO BE CORRECT AND CURRENT, HOWEVER, IT IS NOT INTENDED FOR ANY LEGAL USE, WHETHER IT BE IN SALES, TRANSFERS, TRADES, LEASES OF ANY TYPE, ETC., AND DO NOT ACCEPT RESPONSIBILITY FOR ERRORS OF ANY NATURE OR OMISSIONS CONTAINED HEREIN.

