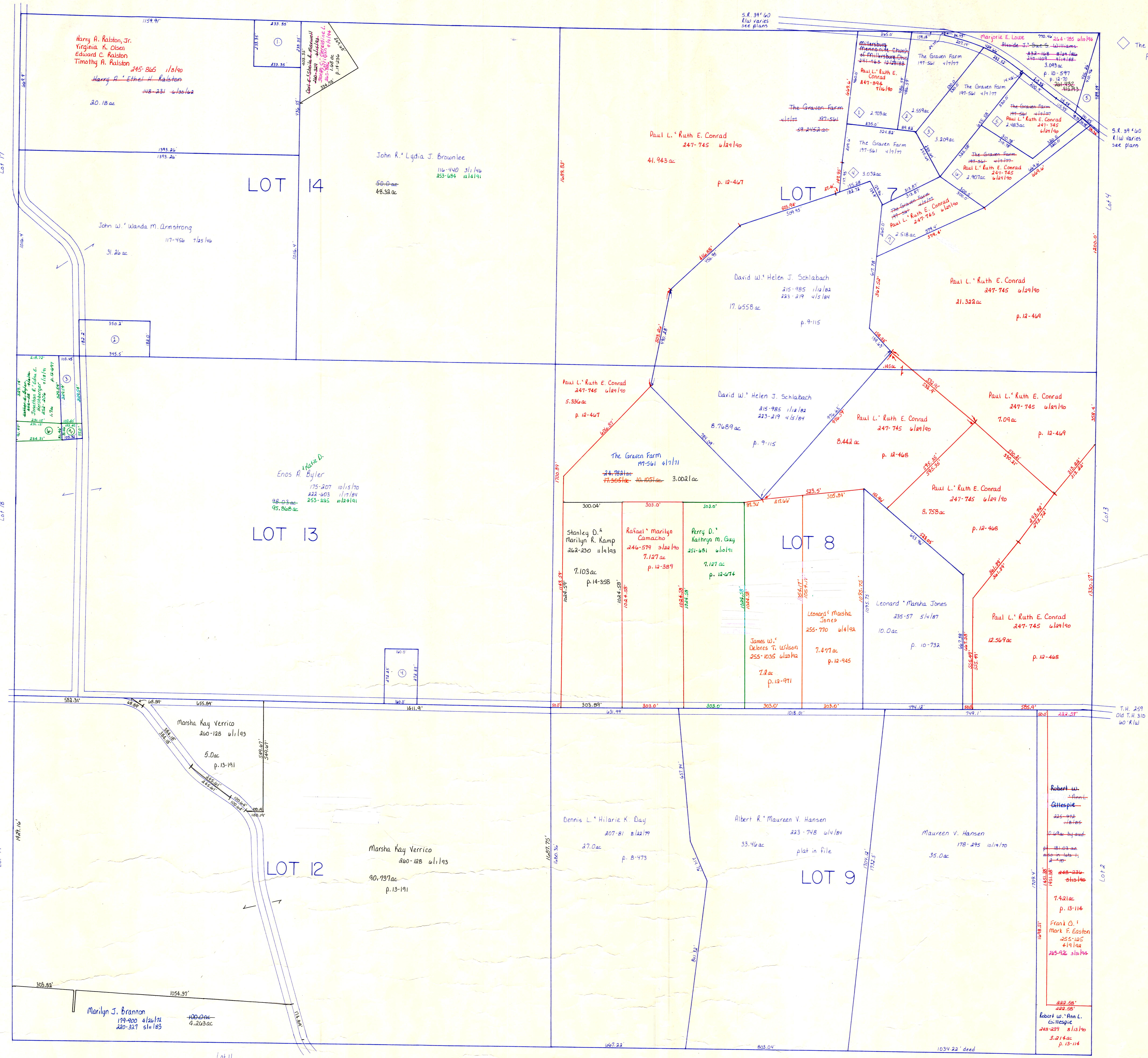


T.H. 257
Old T.H. 452
60' R/W



- ① John Dean & Carol Ann Slates 239-502 4/28/88 1.25 ac p. 5-155
- ② Richard E. Shelton 1827 5/1/82 242-525 5/1/84 1.25 ac p. 3-63 B
- ③ Enos A. Byler 175-207 10/15/70 222-203 1/17/84 253-225 6/12/14 95.80 ac
- ④ Martin W. & Susan Kuhns 229-490 1/25/85 1.0 ac p. 10-497
- ⑤ Beverly Ann McCullough 221-399 8/31/85 .595 ac p. 7-504
- ⑥ Esther E. Byler 252-08 7/1/81 .462 ac p. 10-497
- ⑦ Esther E. Byler 229-488 1/25/85 231-596 1/20/87 .188 ac p. 12-697 252-205 7/1/84

T-9, R-8, 2nd. Qtr.
lots 7, 8, 9, 12, 13, 14
MONROE TWP.

SCALE: 1" = 200'

LET IT BE KNOWN, THIS MAP HAS BEEN PREPARED AS A REFERENCE GUIDE TO PROPERTY OWNERSHIP. WE BELIEVE THIS INFORMATION TO BE CORRECT AND CURRENT, HOWEVER, IT IS NOT INTENDED FOR ANY LEGAL USE, WHETHER IT BE IN SALES, TRANSFERS, TRADES, LEASES OF ANY TYPE, ETC. AND DO NOT ACCEPT RESPONSIBILITY FOR ERRORS OF ANY NATURE OR OMISSIONS CONTAINED HEREIN.

