

H-23

H-28

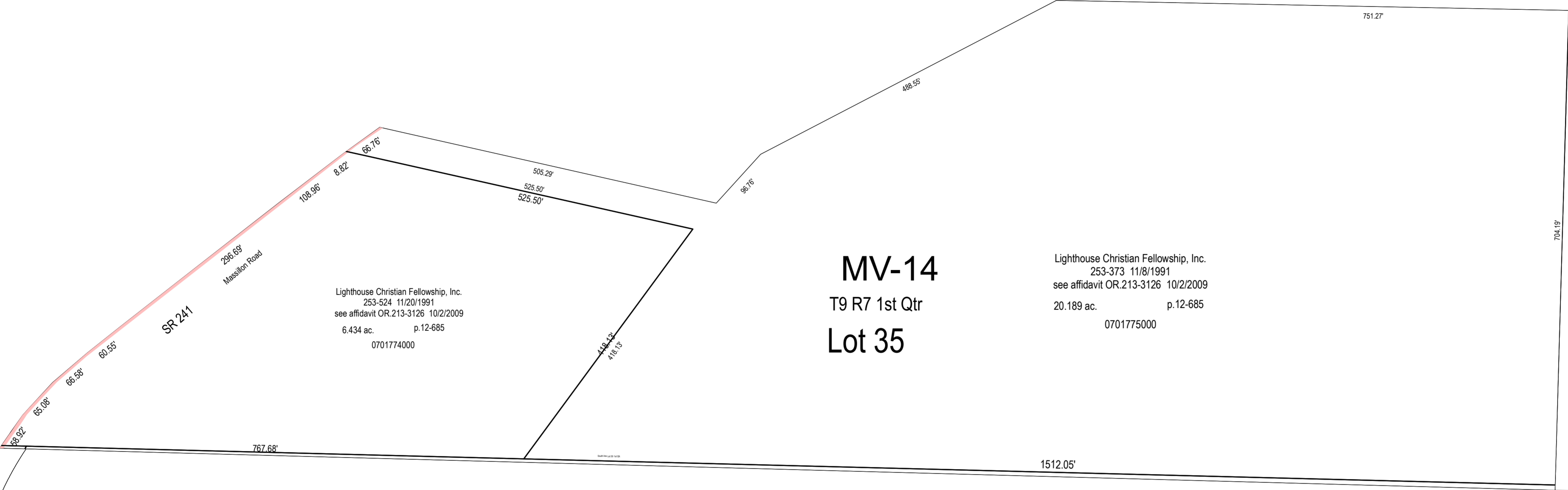
MV-14
T9 R7 1st Qtr
Lot 35

Lighthouse Christian Fellowship, Inc.
253-373 11/8/1991
see affidavit OR.213-3126 10/2/2009
20.189 ac. p.12-685
0701775000

Lighthouse Christian Fellowship, Inc.
253-524 11/20/1991
see affidavit OR.213-3126 10/2/2009
6.434 ac. p.12-685
0701774000

SR 241

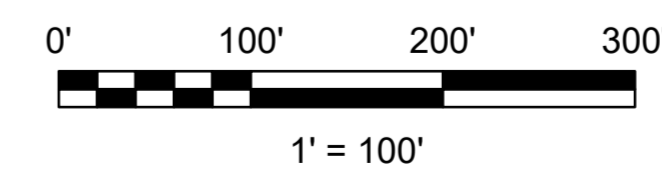
299.88
Mackinon Road



MV-02

H-27

H-22



LET IT BE KNOWN, THIS MAP HAS BEEN PREPARED AS A REFERENCE GUIDE TO PROPERTY OWNERSHIP. WE BELIEVE THIS INFORMATION TO BE CORRECT AND CURRENT. HOWEVER IT IS NOT INTENDED FOR ANY LEGAL USE, WHETHER IT BE SALES, TRANSFERS, TRADES, LEASES OF ANY TYPE, ETC. AND DO NOT ACCEPT RESPONSIBILITY FOR ERRORS OF ANY NATURE OR OMISSIONS CONTAINED HEREIN.

S.F.T.
new survey required
for next transfer

Last Revision: 1/3/2023

Village of Millersburg
.Lot 35
1st Qtr., T-9, R-7
Hardy Twp.
Holmes County, Ohio

MV-14