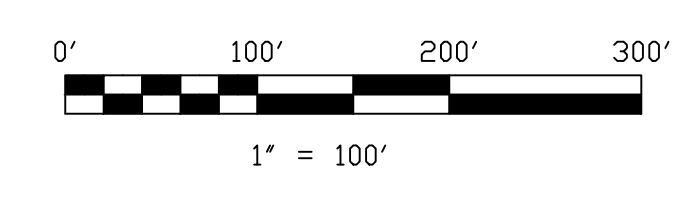


NOTE:
See p.2-223 for correct location of the corporation line for the area annexed 1/12/1987.
Correction resolution 9-24-90-1 recorded 10/11/1990 DV.248-958

Last Revision: 9/17/2008

Incorporated
Village of Millersburg
part Lot 41 and Lot 46
T-9, R-7, 1st Qtr.
Hardy Twp.
Holmes County, Ohio

MV-02



LET IT BE KNOWN, THIS MAP HAS BEEN PREPARED AS A REFERENCE GUIDE TO PROPERTY OWNERSHIP. WE BELIEVE THIS INFORMATION TO BE CORRECT AND CURRENT, HOWEVER IT IS NOT INTENDED FOR ANY LEGAL USE, WHETHER IT BE IN SALES, TRANSFERS, TRAILS, LEASES OF ANY TYPE, ETC., AND DO NOT ACCEPT RESPONSIBILITY FOR ERRORS OF ANY NATURE OR OMISSIONS CONTAINED HEREIN.

S.F.T. new survey required for next transfer