

MC-15

MC-09

William V. Dugan, trustee
OR.0250-3597 10/23/2014
100.0 ac.
1300077000

T8 R6 2nd Qtr
Lot 32

Mark M. Maxwell
Mary M. Maxwell
196-284 6/14/1976
Craze E. Maxwell, trustee
CR.27-941 3/17/1999

103.49 ac.
130029000

T8 R6 2nd Qtr
Lot 19

Janet L. Bremer
OR.0252-6204 7/1/2015
94.0 ac.
1300115000

T8 R6 2nd Qtr
Lot 33

Dan S. and Clara
Yocum
155-348 4/30/1965
155-349 4/30/1965
50.0 ac.
130028000

T8 R6 2nd Qtr
Lot 18

Paul J. and Sara Ann
Hesslinger
CR.184-2108
11/1/2005
15.001 ac.
130018001

Neil D. and Amanda N.
Yocum
OR.188-2875 5/15/2006
19.125 ac.
130018002

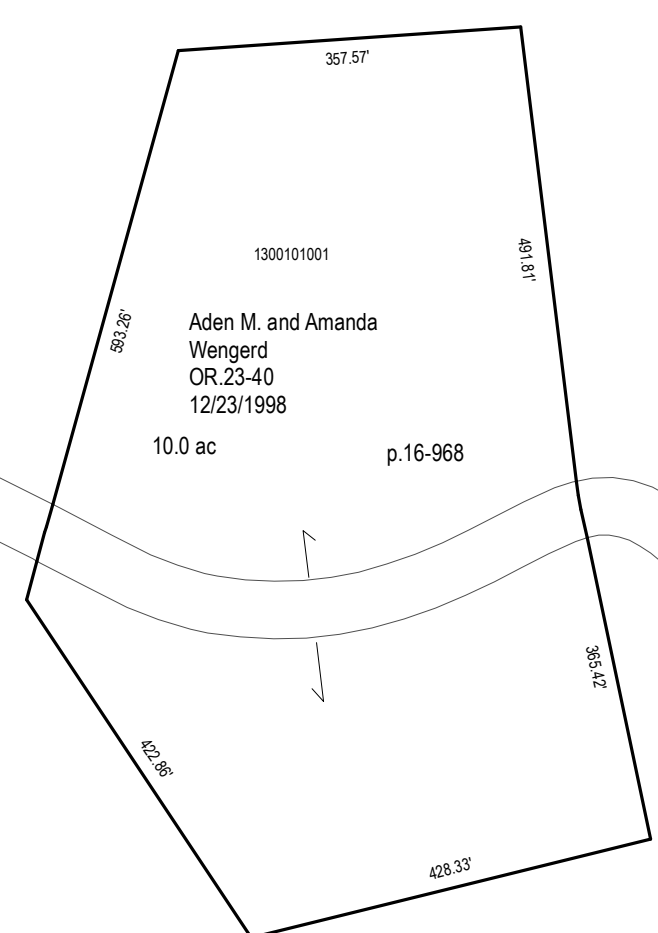
Adrian H. Burkholder
Esther D. Burkholder
CR.331-540
1/28/2012
5.616 ac.
130018000

David Lee Fisher
Bernice Fisher
CR.246-9797 1/25/2013
8.948 ac.
130018003

MC-08

Ivan A. and Esther I. Erb
OR.228-580 9/8/2011
90.0 ac.
1300101000

T8 R6 3rd Qtr
Lot 27



John D. and Mary
Miller
234-863 4/16/1987
10.0 ac.
130020000

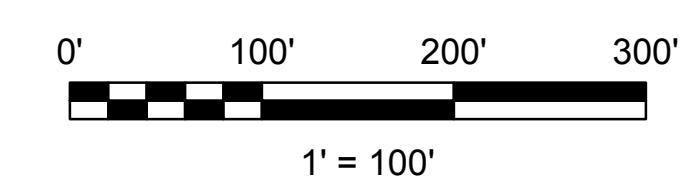
T8 R6 3rd Qtr
Lot 26

Ivan A. and Esther I. Erb
OR.56-227 8/1/2000
90.0 ac.
130026000

MC-20

MC-19

MC-13



LET IT BE KNOWN, THIS MAP HAS BEEN PREPARED AS A REFERENCE GUIDE TO PROPERTY OWNERSHIP. WE BELIEVE THIS INFORMATION TO BE CORRECT AND CURRENT. HOWEVER, IT IS NOT INTENDED FOR ANY LEGAL USE, WHETHER IT BE SALES, TRANSFERS, TRADES, LEASES OF ANY TYPE, ETC. AND DO NOT ACCEPT RESPONSIBILITY FOR ERRORS OF ANY NATURE OR OMISSIONS CONTAINED HEREIN.

S.F.T.
new survey required
for next transfer

Last Revision: 12/31/2015



**Lots 18, 19, 32, 33 2nd
Lots 26 & 27 3rd Qtr
T-8, R-6
Mechanic Twp.
Holmes County, Ohio**

MC-14