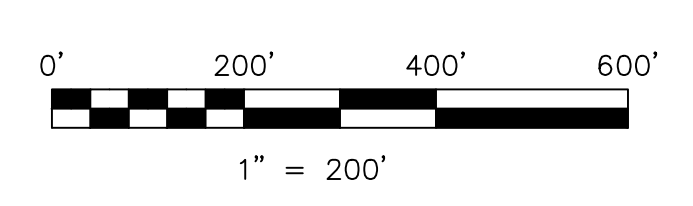


T8, R6, Sec 12 MC-30

Clerk Township T8, R6, Sec 15 C-03

- 1300095004 ① John V.J. and Mattie Erb
OR.177-870 12/22/2004
0.013 ac p.2-390
- 1300610002 ② Abe A. Jr. and Erma Troyer
256-275 7/20/1992
0.062 ac p.2-233
- 1300519001 ③ Mathion A. and Martha J. Yoder
OR.209-2431 3/18/2009
0.06 ac

- ▽ N. & M. Raber Subdivision
Plat 2-333 Platted 6/19/2001
- Twin Valley Subdivision
Plat 2-488 Platted 6/23/2010



LET IT BE KNOWN, THIS MAP HAS BEEN PREPARED AS A REFERENCE GUIDE TO PROPERTY OWNERSHIP. WE BELIEVE THIS INFORMATION TO BE CORRECT AND CURRENT, HOWEVER IT IS NOT INTENDED FOR ANY LEGAL USE, WHETHER IT BE IN SALES, TRANSFERS, TRAVEL, LEASES OF ANY TYPE, ETC. AND DO NOT ACCEPT RESPONSIBILITY FOR ERRORS OF ANY NATURE OR OMISSIONS CONTAINED HEREIN.

⊙ new survey required for next transfer

Last Revision: 8/2/2011

T-8, R-6, Sec.11
Mechanic Twp.
Holmes County, Ohio

MC-35