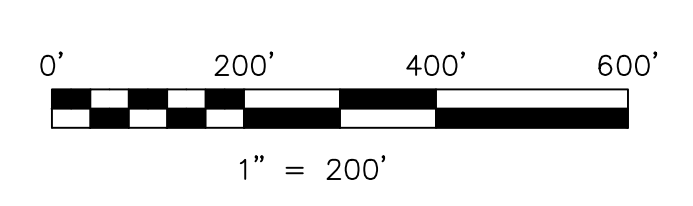


T8, R6, Sec 9 MC-31

Clerk Township T8, R5, Sec 6 C-04

Doughty Rim Subdivision  
Plat 19-1577 Platted 10/2/2009



LET IT BE KNOWN, THIS MAP HAS BEEN PREPARED AS A REFERENCE GUIDE TO PROPERTY OWNERSHIP. WE BELIEVE THIS INFORMATION TO BE CORRECT AND CURRENT, HOWEVER IT IS NOT INTENDED FOR ANY LEGAL USE, WHETHER IT BE IN SALES, TRANSFERS, TRUSTS, LEASES OF ANY TYPE, ETC. AND DO NOT ACCEPT RESPONSIBILITY FOR ERRORS OF ANY NATURE OR OMISSIONS CONTAINED HEREIN.

new survey required  
for next transfer

Last Revision: 11/10/2010

**T-8, R-6, Sec.10**  
**Mechanic Twp.**  
**Holmes County, Ohio**

# MC-36