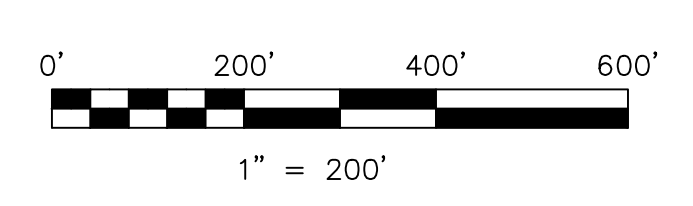


- 1300112002 ① Bands Company, Inc.
OR.20-179 11/13/1998
0.079 ac p.16-915
- 1300607001 ② Dana Egger
248-431 8/27/1990
0.027 ac p.12-508
- 1300133000 ③ Ruth Heinbuch
133-270 10/16/1956
202-659 7/18/1978
202-662 7/18/1978
OR.221-2176 10/25/2010
0.071 ac



LET IT BE KNOWN, THIS MAP HAS BEEN PREPARED AS A REFERENCE GUIDE TO PROPERTY OWNERSHIP. WE BELIEVE THIS INFORMATION TO BE CORRECT AND CURRENT, HOWEVER IT IS NOT INTENDED FOR ANY LEGAL USE, WHETHER IT BE IN SALES, TRANSFERS, TRUSTS, LEASES OF ANY TYPE, ETC. AND DO NOT ACCEPT RESPONSIBILITY FOR ERRORS OF ANY NATURE OR OMISSIONS CONTAINED HEREIN.

⊙ new survey required for next transfer

Last Revision: 10/25/2010

**T-8, R-7, Sec.10
Mechanic Twp.
Holmes County, Ohio**

MC-09