

T8, R6, 2nd Qtr. Lot 17 MC-20

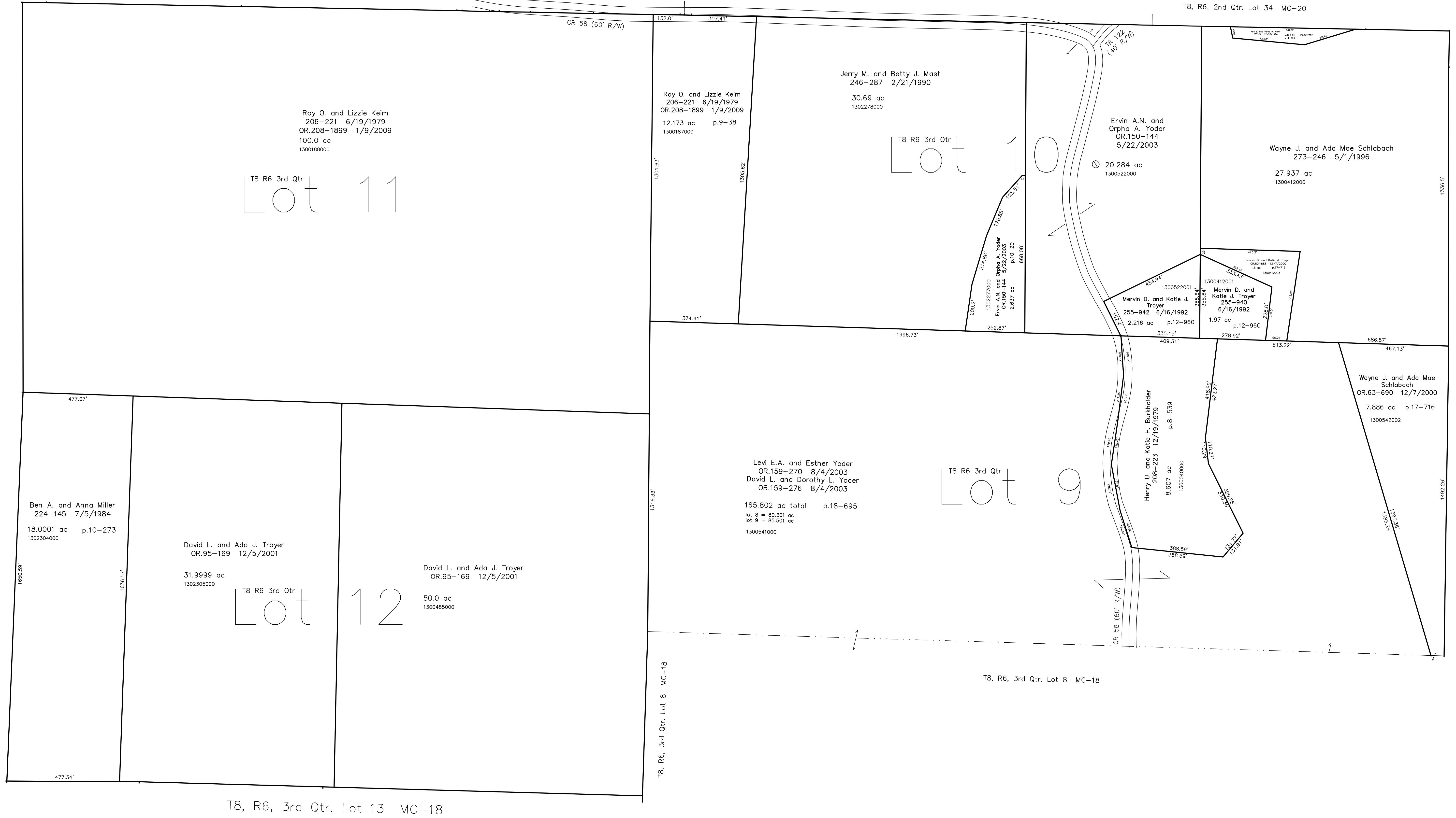
T8, R6, 2nd Qtr. Lot 1 MC-20

T8, R6, 2nd Qtr. Lot 34 MC-20

T8, R6, 3rd Qtr. Lot 26 MC-14

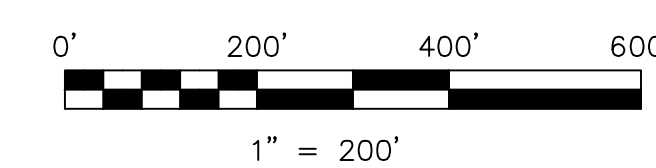
T8, R6, 3rd Qtr. Lot 25 MC-13

T8, R6, Sec 13 MC-25



Last Revision: 1/9/2009

**T-8, R-6, 3rd.Qtr.
Lots 9,10,11,12
Mechanic Twp.
Holmes County, Ohio**



LET IT BE KNOWN, THIS MAP HAS BEEN PREPARED AS A REFERENCE GUIDE TO PROPERTY OWNERSHIP. WE BELIEVE THIS INFORMATION TO BE CORRECT AND CURRENT, HOWEVER IT IS NOT INTENDED FOR ANY LEGAL USE, WHETHER IT BE IN SALES, TRANSFERS, TRAILS, LEASES OF ANY TYPE, ETC. AND DO NOT ACCEPT RESPONSIBILITY FOR ERRORS OF ANY NATURE OR OMISSIONS CONTAINED HEREIN.

⊕ new survey required for next transfer

MC-19