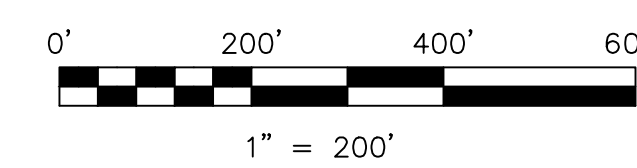


Killbuck Township T8, R7, Sec. 13 K-28

T8, R7, Sec. 11 MC-08

# Sec 12

- 1300468000 ① Household Realty Corp.  
OR.207-1532 10/23/2008  
0.2 ac p.5-66
- 1300469000 ② Household Realty Corp.  
OR.207-1532 10/23/2008  
0.895 ac p.4-66
- 1300453000 ③ Charles V. and Janet J. Straits  
153-41 6/11/1964  
1.0 ac
- 1300407000 ④ James L. and Deborah A. Schafer  
172-451 12/29/1969  
1.0 ac p.4-144
- 1300454000 ⑤ Shelly Costello  
OR.39-122 9/20/1999  
1.0 ac p.4-144
- 1300455000 ⑥ Shelly Costello  
OR.39-124 9/20/1999  
1.0 ac
- 1300418000 ⑦ Helena M. Barnett  
261-891 10/13/1993  
1.82 ac p.4-144
- 1300080000 ⑧ Gladis Gafford  
260-417 6/22/1993  
263-177 1/20/1994  
1.64 ac p.5-107
- 1300452000 ⑨ Charles V. and Janet J. Straits  
172-485 1/5/1970  
1.78 ac p.5-25
- 1300453001 ⑩ Charles V. and Janet J. Straits  
260-327 6/15/1993  
260-336 6/17/1993  
1.682 ac p.14-235



LET IT BE KNOWN, THIS MAP HAS BEEN PREPARED AS A REFERENCE GUIDE TO PROPERTY OWNERSHIP. WE BELIEVE THIS INFORMATION TO BE CORRECT AND CURRENT, HOWEVER IT IS NOT INTENDED FOR ANY LEGAL USE, WHETHER IT BE IN SALES, TRANSFERS, TRADES, LEASES OF ANY TYPE, ETC., AND DO NOT ACCEPT RESPONSIBILITY FOR ERRORS OF ANY NATURE OR OMISSIONS CONTAINED HEREIN.

⊙ new survey required for next transfer

Last Revision: 10/23/2008

**T-8, R-7, Sec.12**  
**Mechanic Twp.**  
**Holmes County, Ohio**

# MC-03