

T8, R6, 3rd Qtr. Lot 27 MC-14

T8, R6, 3rd Qtr. Lot 26 MC-14

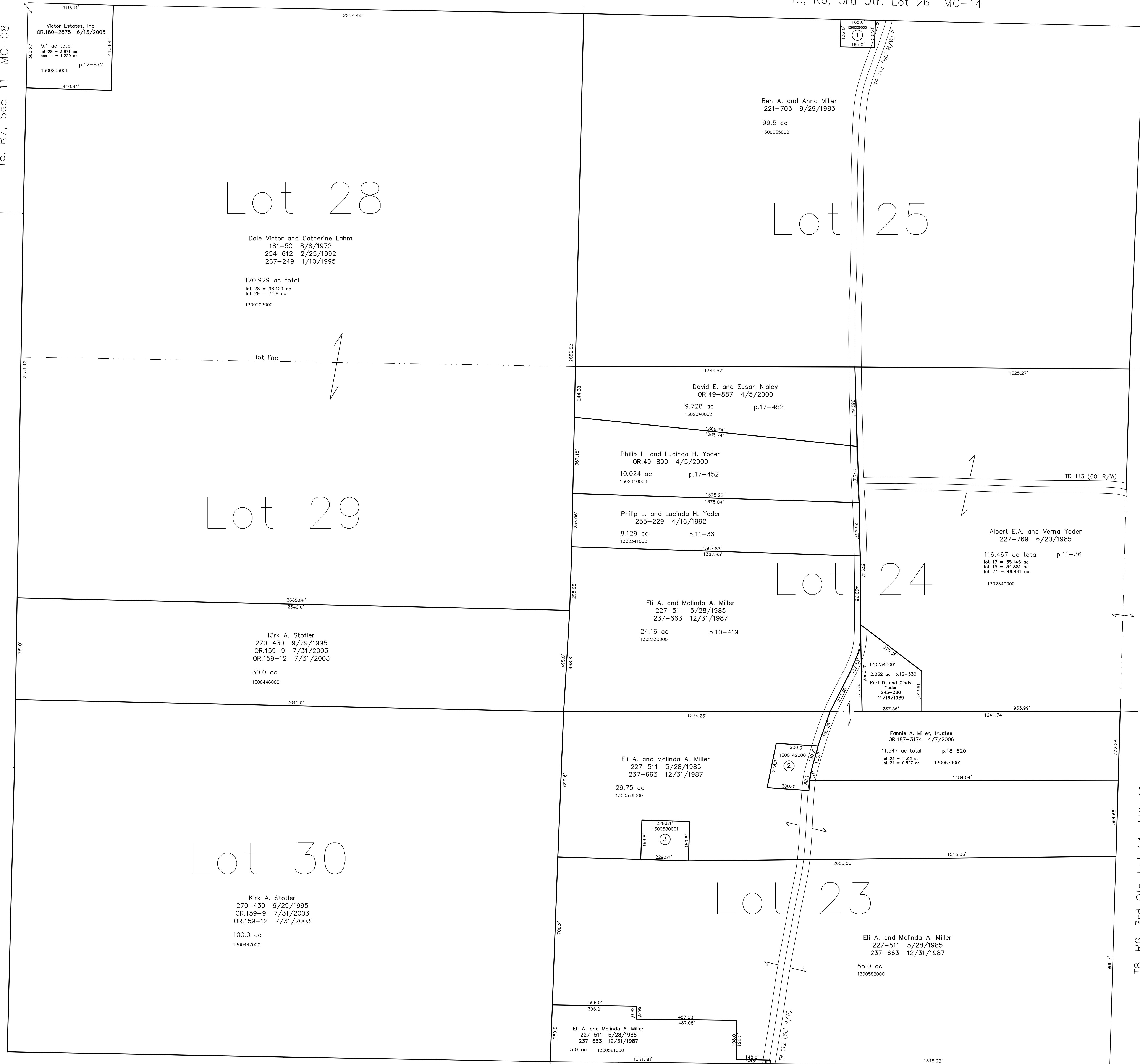
T8, R7, Sec. 11 MC-08

T8, R7, Sec. 20 MC-07

T8, R6, 3rd Qtr. Lot 12 MC-19

T8, R6, 3rd Qtr. Lot 13 MC-18

T8, R6, 3rd Qtr. Lot 14 MC-18



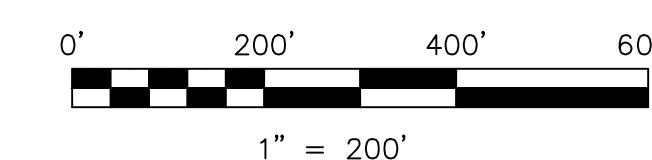
T8, R6, 3rd Qtr. Lot 31 MC-12

T8, R6, 3rd Qtr. Lot 22 MC-12

- 136006000 ① Mechanic Township Trustees, et al  
OR.127-199 10/31/2002  
0.5 ac p.18-424
- 1300142000 ② David H. and Leona K. Hershberger  
203-73 8/16/1978  
203-75 8/16/1978  
219-820 3/17/1983  
269-854 8/15/1995  
1.0 ac p.3-46
- 1300580001 ③ David H. and Leona K. Hershberger  
270-101 8/30/1995  
1.0 ac p.14-909

Last Revision: 4/7/2006

**T-8, R-6, 3rd.Qtr.  
Lots 23,24,25,28,29,30  
Mechanic Twp.  
Holmes County, Ohio**



LET IT BE KNOWN, THIS MAP HAS BEEN PREPARED AS A REFERENCE GUIDE TO PROPERTY OWNERSHIP. WE BELIEVE THIS INFORMATION TO BE CORRECT AND CURRENT, HOWEVER IT IS NOT INTENDED FOR ANY LEGAL USE, WHETHER IT BE IN SALES, TRANSFERS, TRADES, LEASES OF ANY TYPE, ETC., AND DO NOT ACCEPT RESPONSIBILITY FOR ERRORS OF ANY NATURE OR OMISSIONS CONTAINED HEREIN.

new survey required for next transfer

**MC-13**