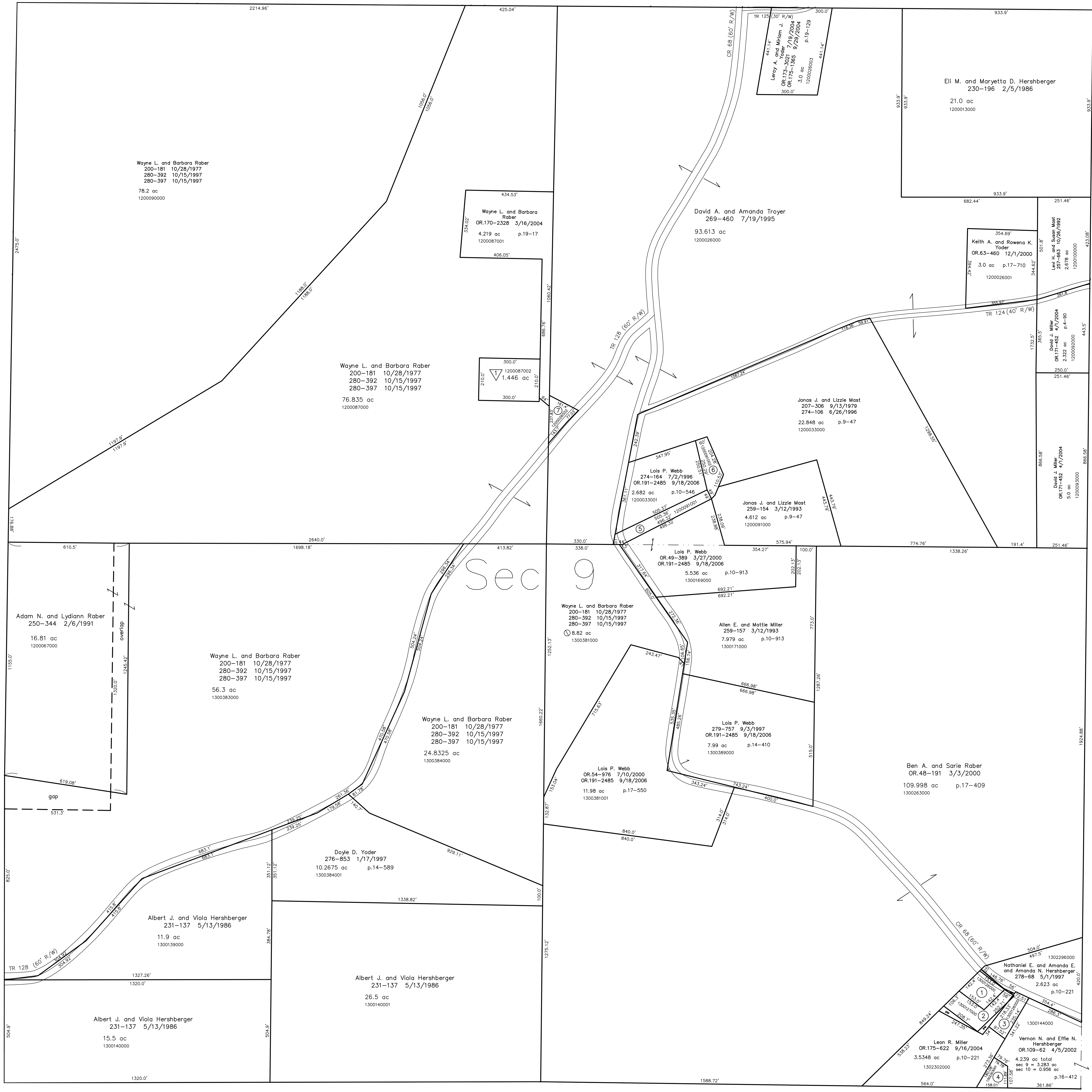


Sec 8 MC-26

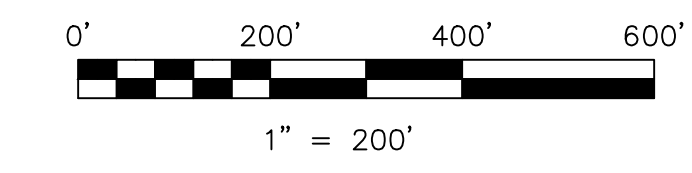
T8, R6, Sec 10 MC-36



- 1300126000 ① Clifford E. and Lou Anne Wray
OR.187-2655 4/3/2006
0.5 ac p.4-7
- 1300127000 ② Clifford E. and Lou Anne Wray
OR.187-2655 4/3/2006
0.656 ac p.7-674
- 1302302001 ③ Leon R. Miller
OR.175-622 9/16/2004
0.439 ac p.10-940
- 1302303001 ④ Leon R. Miller
OR.175-622 9/16/2004
0.369 ac p.10-840
- 1200091001 ⑤ Lois P. Webb
274-167 7/2/1996
OR.191-2485 9/18/2006
0.658 ac p.16-140
- 1200091002 ⑥ Lois P. Webb
OR.46-840 2/8/2000
OR.191-2485 9/18/2006
0.49 ac p.17-380
- 1200026002 ⑦ Wayne L. and Barbara Rober
OR.170-2328 3/16/2004
0.387 ac p.19-16

▽ The Rober Estate Subdivision
Plot 19-822 Platted 10/5/2006

1200087002 ▽ Holmes County Habitat for Humanity, Inc.
OR.192-2799 11/2/2006
1.446 ac p.19-822



LET IT BE KNOWN, THIS MAP HAS BEEN PREPARED AS A REFERENCE GUIDE TO PROPERTY OWNERSHIP. WE BELIEVE THIS INFORMATION TO BE CORRECT AND CURRENT, HOWEVER IT IS NOT INTENDED FOR ANY LEGAL USE, WHETHER IT BE IN SALES, TRANSFERS, TRADES, LEASES OF ANY TYPE, ETC., AND DO NOT ACCEPT RESPONSIBILITY FOR ERRORS OF ANY NATURE OR OMISSIONS CONTAINED HEREIN.

new survey required for next transfer

Last Revision: 11/2/2006

**T-8, R-6, Sec.9
Mechanic Twp.
Holmes County, Ohio**

MC-31