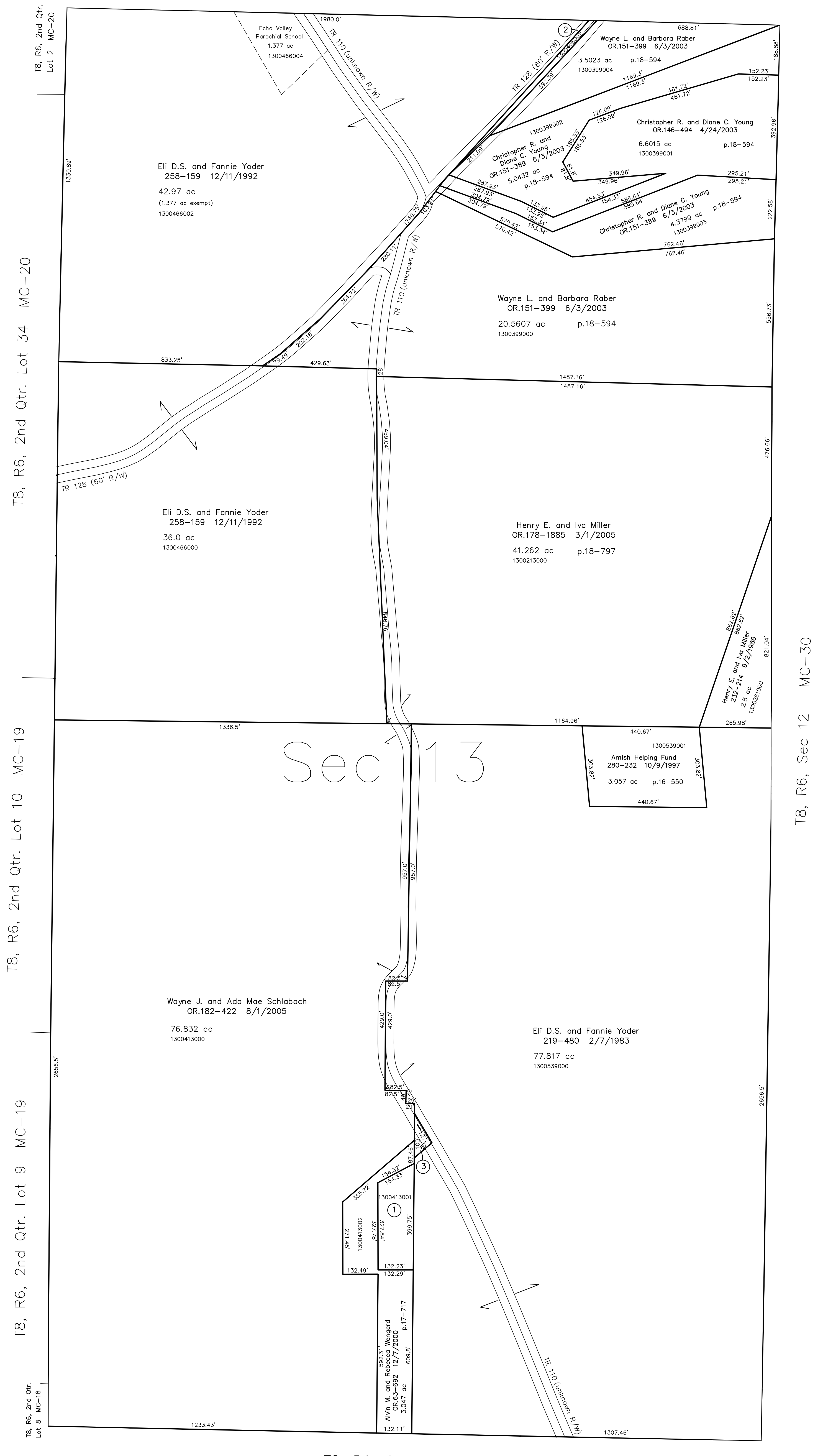
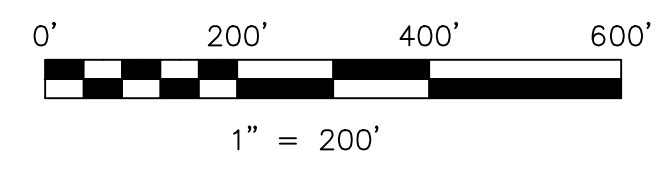


T8, R6, Sec 8 MC-26



T8, R6, Sec 18 MC-24

- 1300413001 ① Alvin M. and Rebecca Wengert
253-688 12/5/1991
1.121 ac p.11-136
- 1300466001 ② Eli D.S. and Fannie Yoder
258-159 12/11/1992
0.29 ac
- 1300539002 ③ Alvin M. and Rebecca Wengert
OR.63-695 12/7/2000
0.126 ac p.17-717



LET IT BE KNOWN, THIS MAP HAS BEEN PREPARED AS A REFERENCE GUIDE TO PROPERTY OWNERSHIP. WE BELIEVE THIS INFORMATION TO BE CORRECT AND CURRENT, HOWEVER IT IS NOT INTENDED FOR ANY LEGAL USE, WHETHER IT BE IN SALES, TRANSFERS, TRUSTS, LEASES OF ANY TYPE, ETC., AND DO NOT ACCEPT RESPONSIBILITY FOR ERRORS OF ANY NATURE OR OMISSIONS CONTAINED HEREIN.

new survey required for next transfer

Last Revision: 12/20/2006

T-8, R-6, Sec.13
Mechanic Twp.
Holmes County, Ohio

MC-25

