

T8, R6, 3rd Qtr. Lot 27 MC-14

T8, R6, 3rd Qtr. Lot 26 MC-14

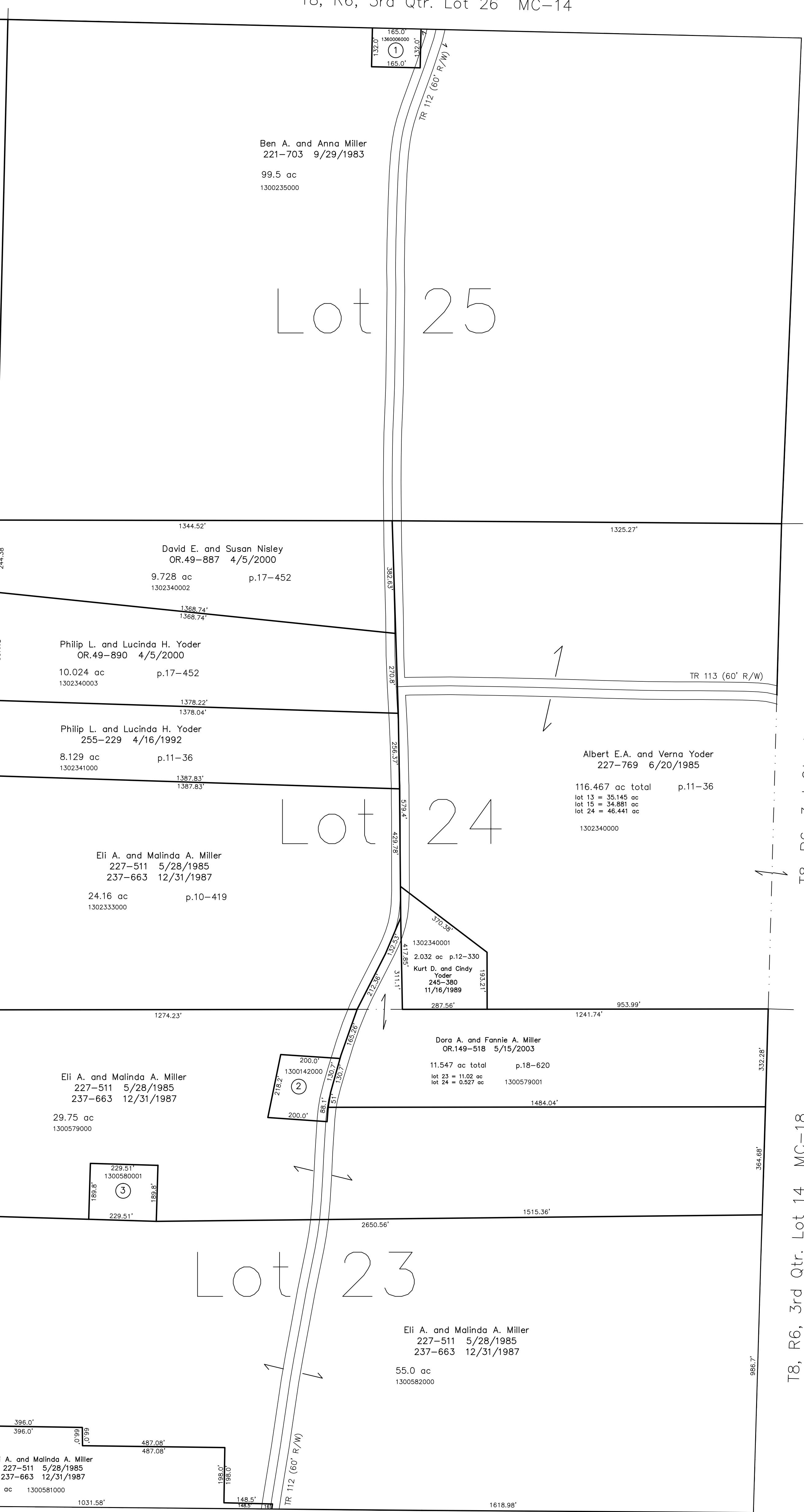
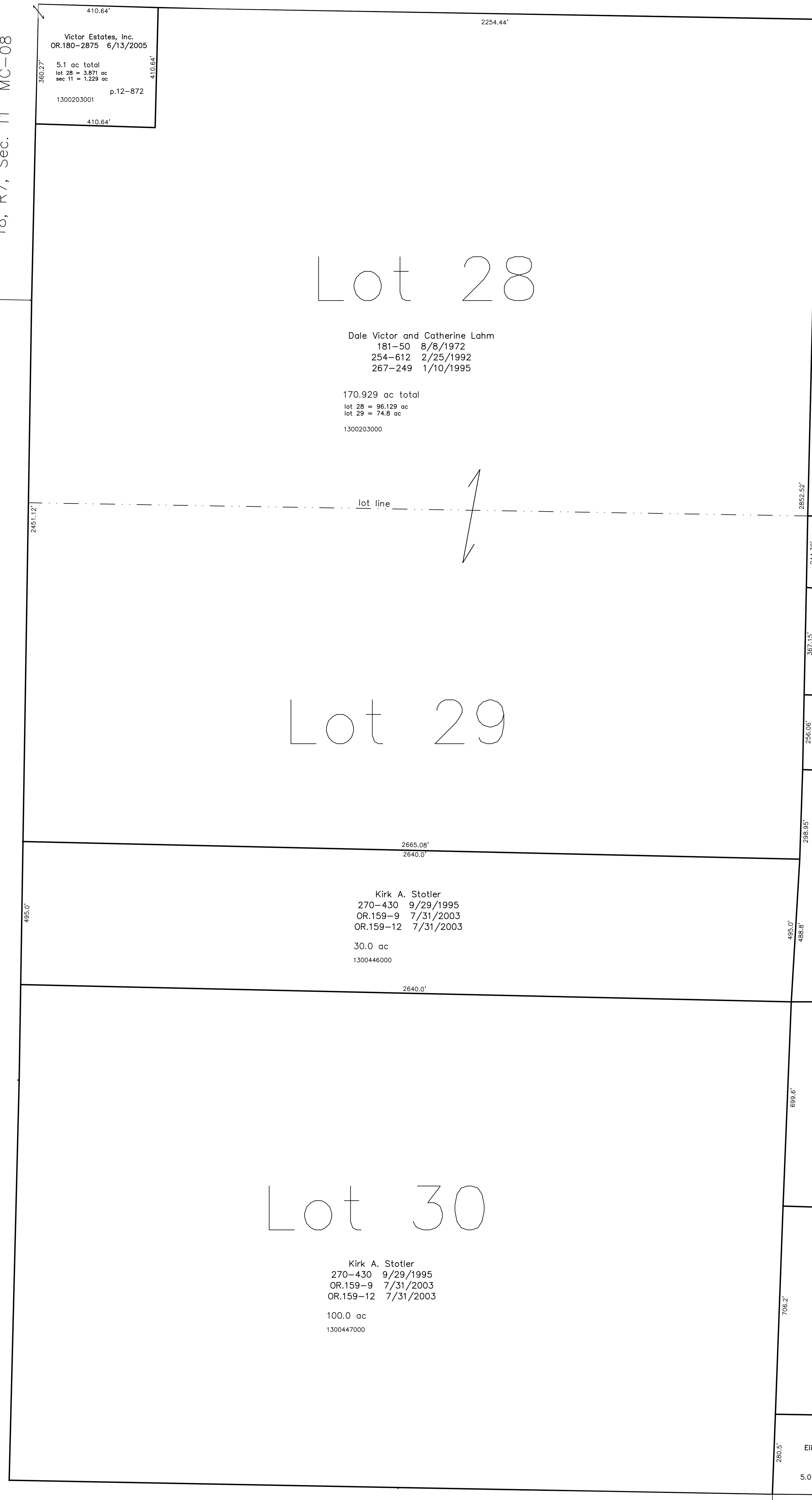
T8, R7, Sec. 11 MC-08

T8, R7, Sec. 20 MC-07

T8, R6, 3rd Qtr. Lot 12 MC-19

T8, R6, 3rd Qtr. Lot 13 MC-18

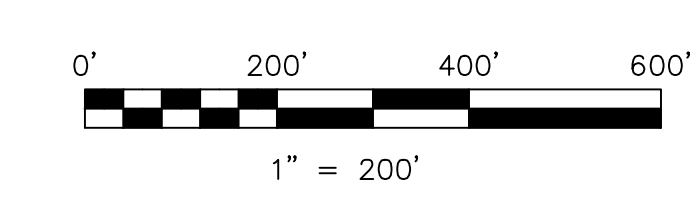
T8, R6, 3rd Qtr. Lot 14 MC-18



T8, R6, 3rd Qtr. Lot 31 MC-12

T8, R6, 3rd Qtr. Lot 22 MC-12

- 1360006000 ① Mechanic Township Trustees, et al
 OR.127-199 10/31/2002
 0.5 ac p.18-424
- 1300142000 ② David H. and Leona K. Herahberger
 203-73 8/16/1978
 203-75 8/16/1978
 219-820 3/17/1983
 269-854 8/15/1995
 1.0 ac p.3-49
- 1300580001 ③ David H. and Leona K. Herahberger
 270-101 8/20/1995
 1.0 ac p.14-909



LET IT BE KNOWN, THIS MAP HAS BEEN PREPARED AS A REFERENCE GUIDE TO PROPERTY OWNERSHIP. WE BELIEVE THIS INFORMATION TO BE CORRECT AND CURRENT, HOWEVER IT IS NOT INTENDED FOR ANY LEGAL USE, WHETHER IT BE IN SALES, TRANSFERS, TRUSTS, LEASES OF ANY TYPE, ETC. AND DO NOT ACCEPT RESPONSIBILITY FOR ERRORS OF ANY NATURE OR OMISSIONS CONTAINED HEREIN.

⊙ new survey required for next transfer

Last Revision: 6/13/2005
T-8, R-6, 3rd.Qtr.
Lots 23,24,25,28,29,30
Mechanic Twp.
Holmes County, Ohio

MC-13