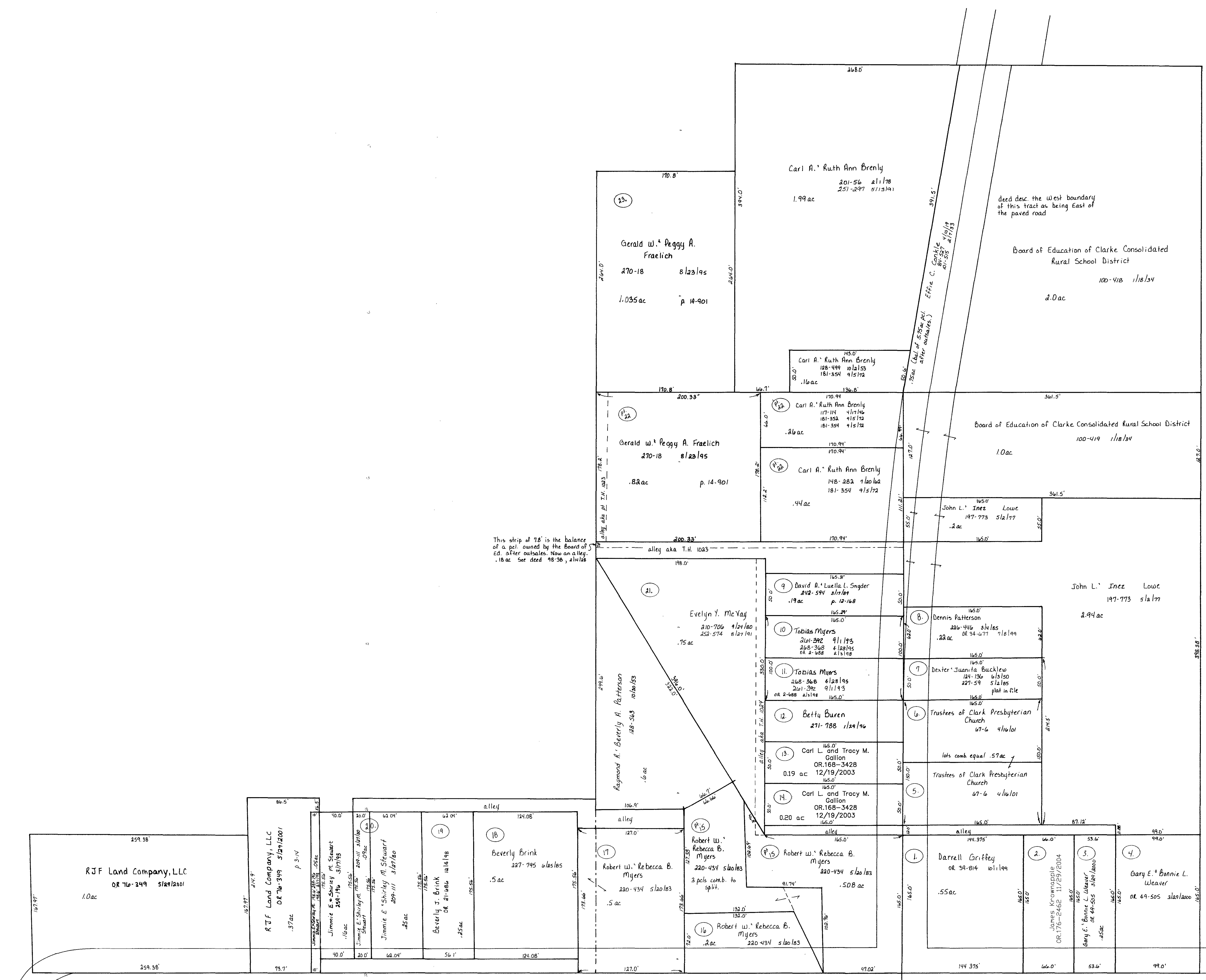


S. R. 83
R/W varies
see plans



This strip of 78' is the balance of a pt. owned by the Board of Ed. after outsales. Now an alley. .18 ac See deed 98-38, 2/12/28'

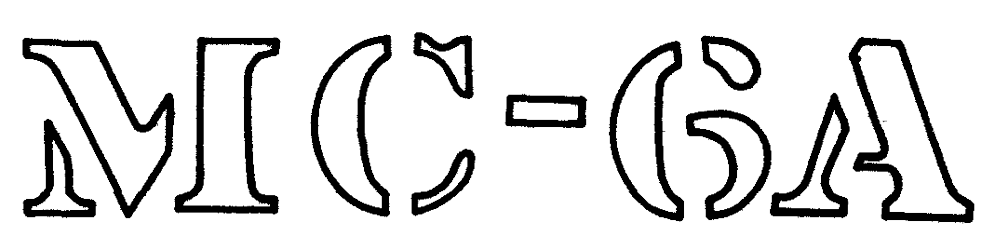
This strip of 78' is the balance of a pt. owned by the Board of Ed. after outsales. Now an alley. .18 ac See deed 98-38, 2/12/28'

Coshocton County Road #19

S. R. 83
R/W varies
see plans

**CLARK VILLAGE
MECHANIC TWP.
T-8, R-7, Sec. 21
SCALE 1" = 50'**

Last Revision: 11/29/2004



T.H. 105
Old T.H. 6A
NO R/W

LET IT BE KNOWN, THIS MAP HAS BEEN PREPARED AS A REFERENCE GUIDE TO PROPERTY OWNERSHIP. WE BELIEVE THIS INFORMATION TO BE CORRECT FOR ANY LEGAL USE, WHETHER IT BE IN SALES, TRANSFERS, TRADES, LEASES OF ANY TYPE, ETC., AND DO NOT ACCEPT RESPONSIBILITY FOR ERRORS OF ANY NATURE OR OMISSIONS CONTAINED HEREIN.