

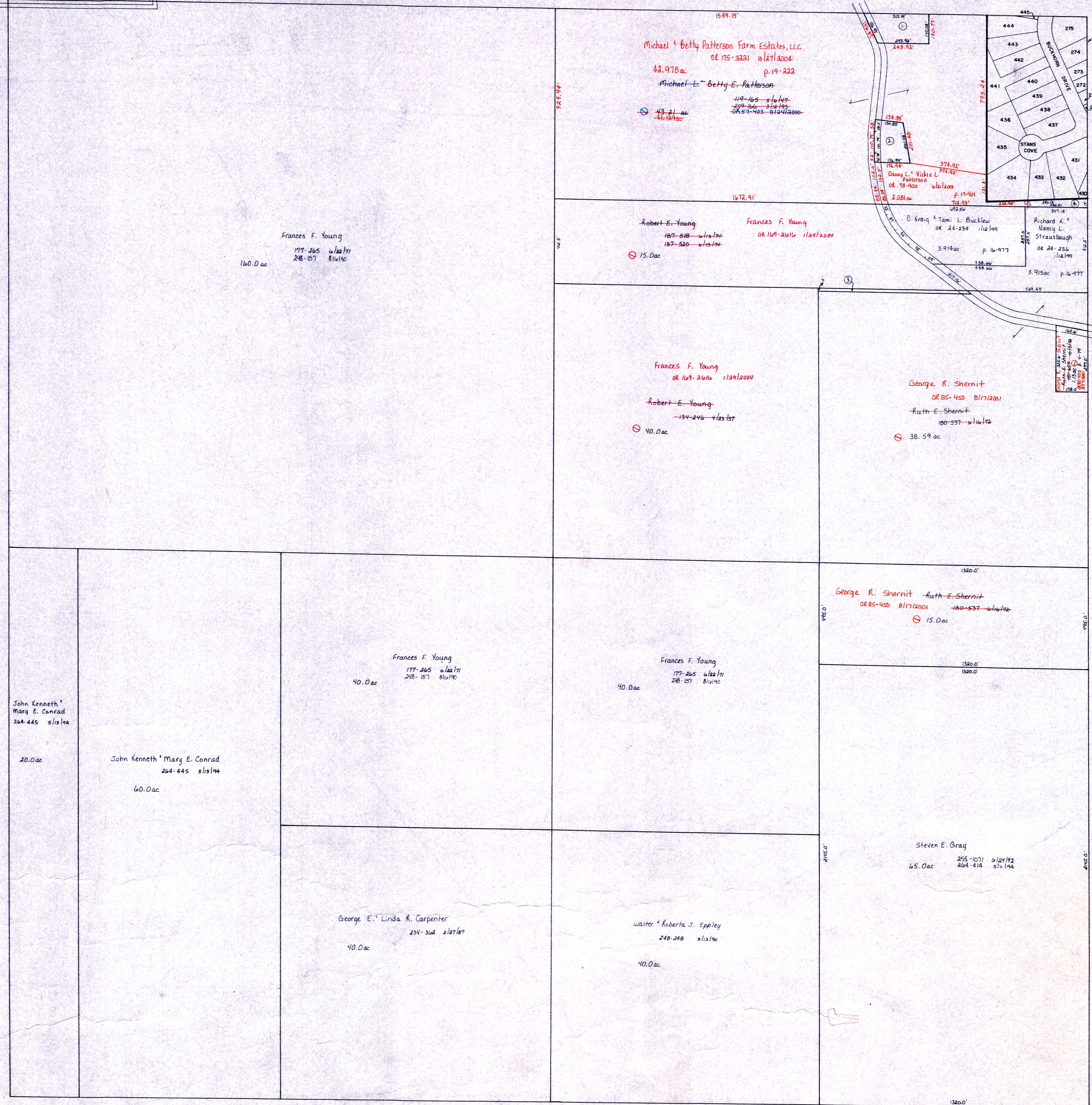
T.H. 80  
Old T.H. 43  
40' R/W

T.H. 80  
Old T.H. 43  
40' R/W

Sec. 19

C.H. 150  
60' R/W

Killbuck Twp.



Lake Buckhorn Property Owners Association, Inc.  
108-284 10/1/10  
all roads late dam basins in subdivision  
175.58 ac in lake  
134.84 ac in roads

- ⊕ Roger Patterson 200-355 1/12/79 9ac p. 8-104
- ⊕ Danny L. Vicki L. Patterson 170-405 1/12/79 200-56 1/12/79 200-56 1/12/79 200-56 1/12/79 p. 5-75
- ⊕ Robert E. Young 187-518 1/12/79 187-520 1/12/79 200-56 1/12/79 200-56 1/12/79
- ⊕ Richard L. Nancy K. Strausbaugh 24-435 7/12/97 1012 p. 11-772

Coshocton County

T-8, R-7, Sec. 22  
MECHANIC TWP.  
SCALE: 1"=200'

MIC-1

LET IT BE KNOWN, THIS MAP HAS BEEN PREPARED AS A REFERENCE GUIDE TO PROPERTY OWNERSHIP. WE BELIEVE THIS INFORMATION TO BE CORRECT AND CURRENT. HOWEVER, IT IS NOT INTENDED FOR ANY LEGAL USE, WHETHER IT BE IN SALES, TRANSFERS, TRUSTS, LEASES OF ANY TYPE, ETC., AND DO NOT ACCEPT RESPONSIBILITY FOR ERRORS OF ANY NATURE OR OMISSIONS CONTAINED HEREIN.