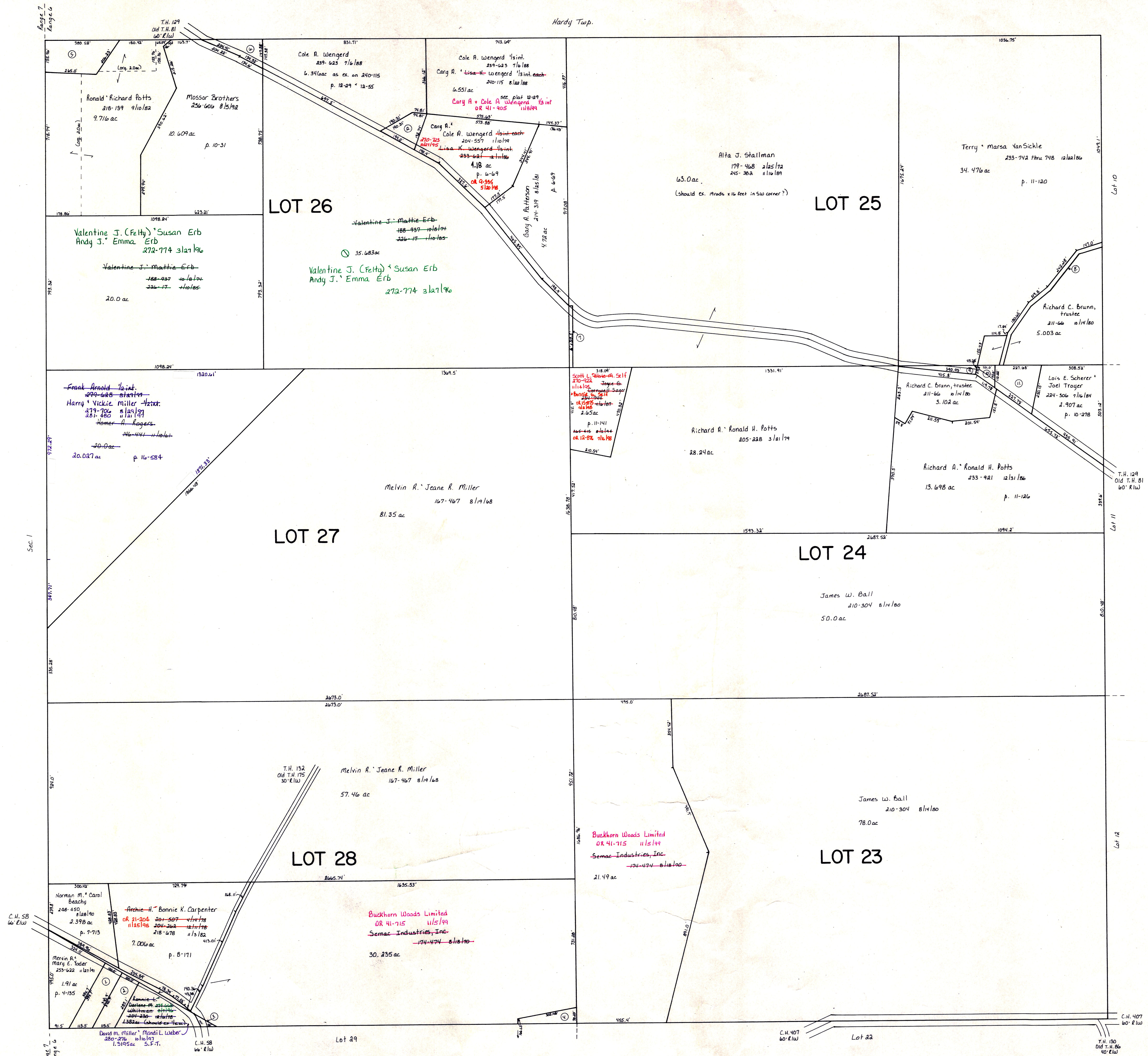


Hardy Twp.



- ① Nathaniel & Lorie Ann Morehouse 280-143 4/21/17
- ② Frank Jr. & Kris Arnold 222-580 1/21/16 .506 ac p. 4-135
- ③ Nathaniel & Lorie Ann Morehouse 280-143 4/21/17
- ④ Frank Jr. & Kris Arnold 222-580 1/21/16 .752 ac p. 4-135
- ⑤ Buckhorn Woods Limited OR 41-715 1/15/19
- ⑥ Sema Industries, Inc. 174-474 8/18/10 .0625 ac
- ⑦ Adam T. & Lorian A. Weisgarber 231-425 3/15/17 .361 ac p. 8-173
- ⑧ David S. Jr. Rekus 255-252 4/1/16, 203-260 5/11/19 1.209 ac p. 10-290
- ⑨ Robert C. & Nancy K. Kupper 225-671 4/24/16 .502 ac p. 13-76
Marian L. Steffen 210-303 4/22/15
- ⑩ Joyce G. & Corneille Sager 234-704 4/1/17 1/15 ac p. 11-141
Seth L. & Emma S. Serr 228-922 2/2/15 7/16/18 - Bonnie S. Siff 4/15/19 4/1/16
- ⑪ Valint. Ronald H. & Richard A. Potts 133-545 2/13/17 } .39 ac
Valint. Hope Hummel 240-504 4/1/18 }
242-976 4/1/18 }
- ⑫ Terry & Marsa VanSickle 255-792 thru 798 12/21/16 .201 ac p. 11-120
- ⑬ Richard C. Bruno, Trustee 211-66 10/1/18 .13 ac
- ⑭ Eileen B. & DeHass 220-766 4/24/16 .2811 ac p. 8-761
Richard C. Bruno, Trustee OR 41-715 1/15/19
- ⑮ Cole A. Wengert 204-557 1/16/19, 240-111 1/15 8/12/18 .52 ac p. 12-55

T-8, R-6, 2nd. Qtr.
Lots 23, 24, 25, 26, 27, 28
MECHANIC TWP.
SCALE: 1" = 200'

LET IT BE KNOWN, THIS MAP HAS BEEN PREPARED AS A REFERENCE GUIDE TO PROPERTY OWNERSHIP. WE BELIEVE THIS INFORMATION TO BE CORRECT AND CURRENT, HOWEVER, IT IS NOT INTENDED FOR ANY LEGAL USE, WHETHER IT BE IN SALES, TRANSFERS, TRADES, LEASES OF ANY TYPE, ETC., AND DO NOT ACCEPT RESPONSIBILITY FOR ERRORS OF ANY NATURE OR OMISSIONS CONTAINED HEREIN.

MC-16