

T.H. 80  
Old T.H. 43  
40' R/W

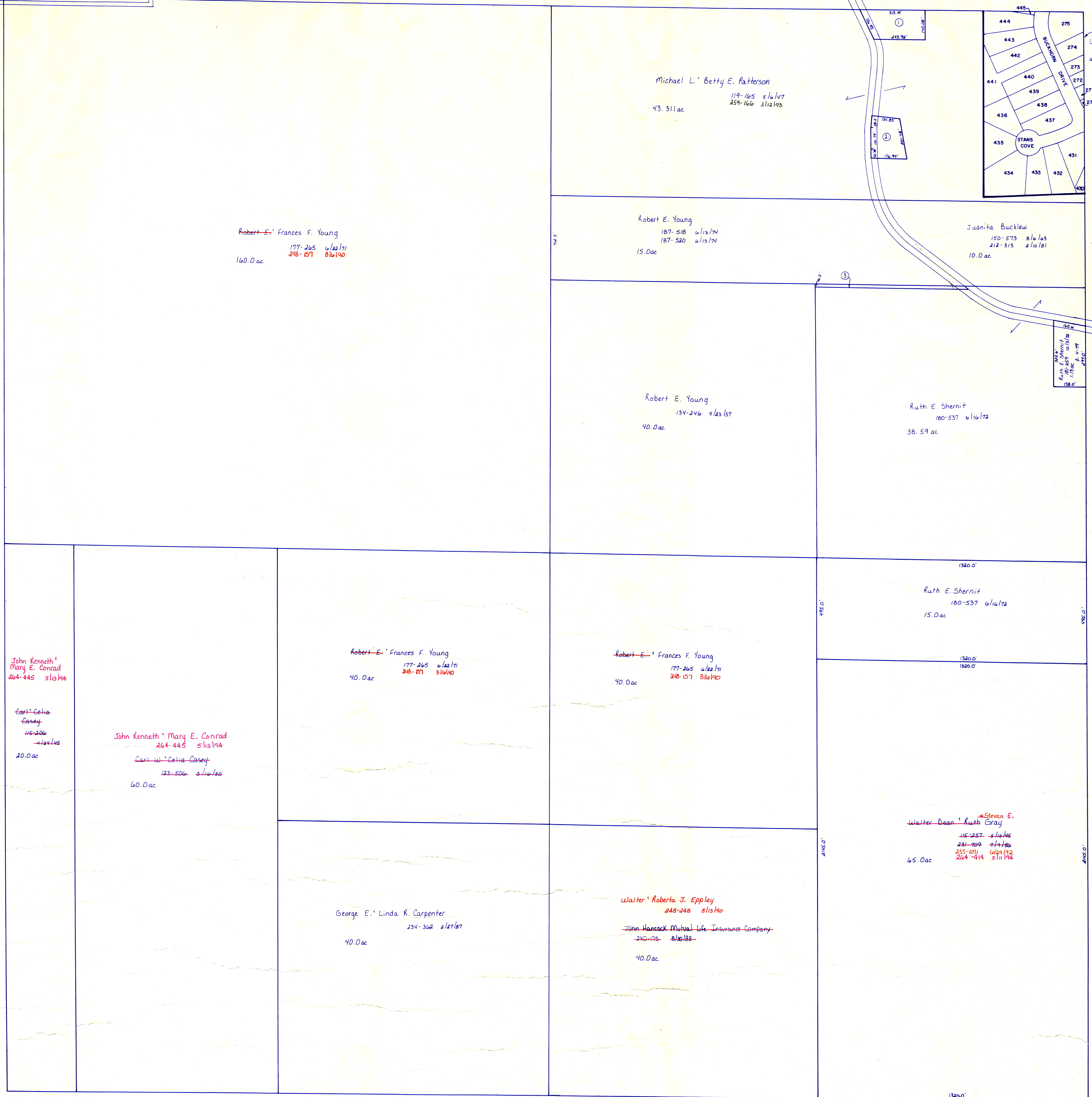
T.H. 80  
Old T.H. 43  
40' R/W

Sec. 19

C.H. 150  
60' R/W

Killbuck Twp.

Lake Buckhorn Property Owners Association, Inc.  
168-284 10/18/88  
all roads lake dam & basin area in subdivision  
175.38 ac in lake & 134.84 ac in roads & auditors acreages



- ① Roger Patterson 200-355 11/13/77 .9 ac p. 8-104
- ② Danny L. & Vicki L. Patterson 176-445 4/13/71, 220-35 4/13/83 .73 ac p. 5-75
- ③ Robert E. Young 187-518 6/13/71, 187-520 6/13/71 .28 ac cal.

Coshocot County

T-8, R-7, Sec. 22  
MECHANIC TWP.

SCALE: 1" = 200'

MC-1

LET IT BE KNOWN, THIS MAP HAS BEEN PREPARED AS A REFERENCE GUIDE TO PROPERTY OWNERSHIP AND CURRENT, HOWEVER, IT IS NOT INTENDED FOR ANY LEGAL USE, WHETHER IT BE IN SALES, TRANSFERS, TRADES, LEASES OF ANY TYPE, ETC., AND DO NOT ACCEPT RESPONSIBILITY FOR ERRORS OF ANY NATURE OR OMISSIONS CONTAINED HEREIN.