

Hardy Twp.

Berlin Twp.

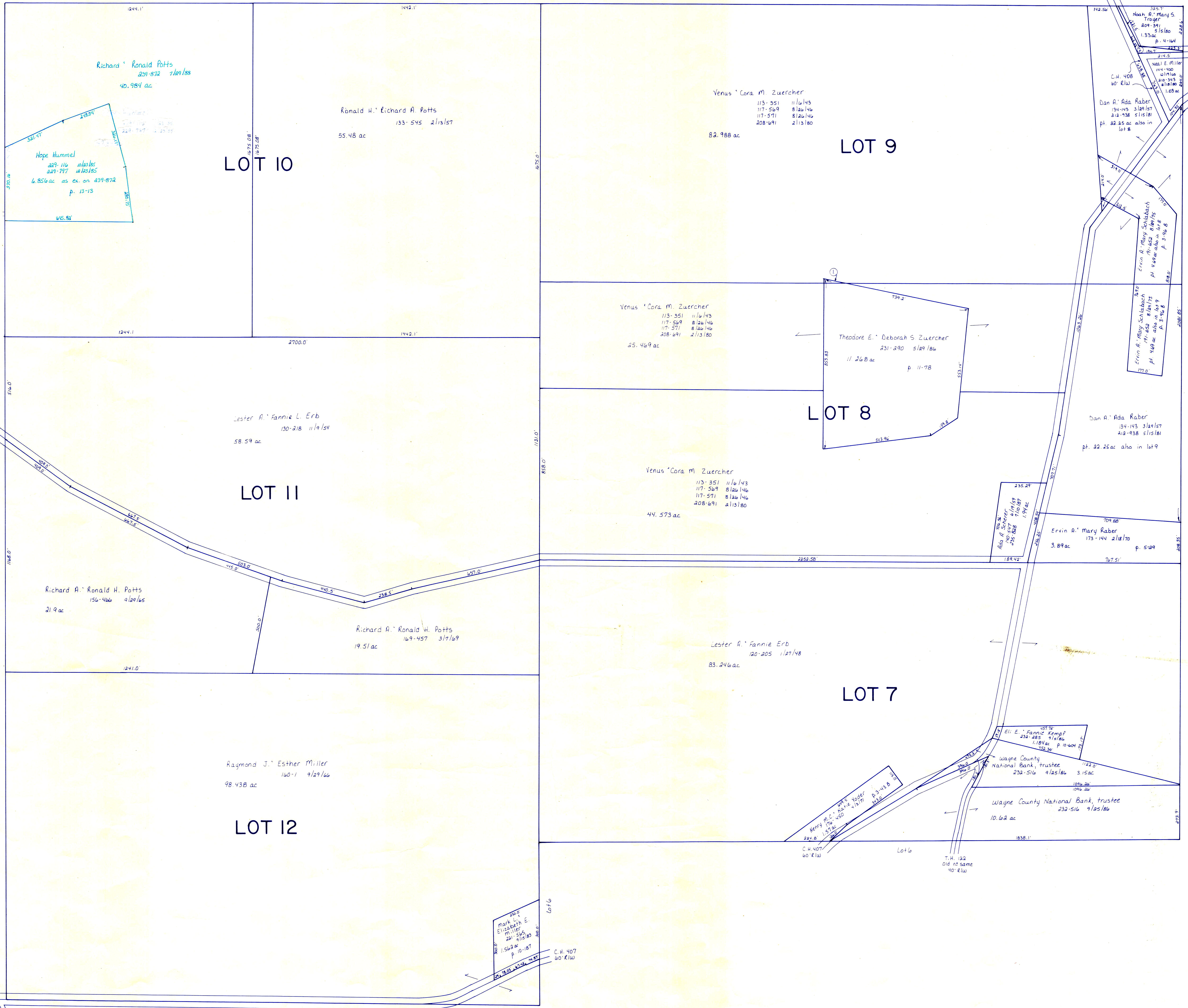
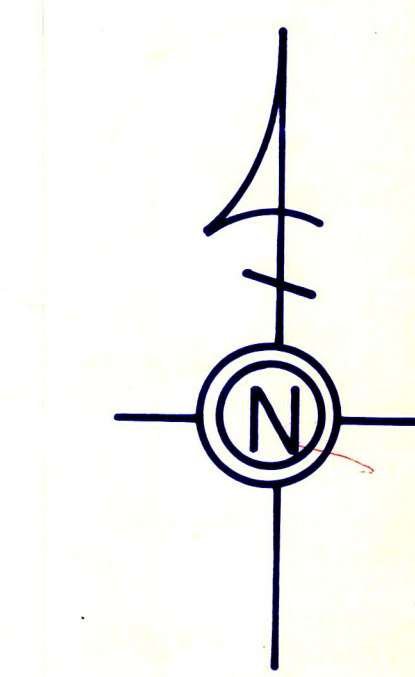
C.H. 68
60' R/W

C.H. 68
60' R/W

C.H. 408
60' R/W

C.H. 407
60' R/W

Sec. 3



Richard A. Ronald Potts
229-872 7/29/88
40.984 ac

Hope Hummel
229-116 10/21/85
229-797 10/21/85
6.856 ac as ex. on 439-872
p. 13-13

Ronald H. Richard A. Potts
133-545 2/11/87
55.48 ac

Venus Cora M. Zuercher
113-351 11/6/43
117-569 8/26/46
117-571 8/26/46
208-691 2/13/80
82.988 ac

LOT 9

LOT 10

Venus Cora M. Zuercher
113-351 11/6/43
117-569 8/26/46
117-571 8/26/46
208-691 2/13/80
25.469 ac

Theodore E. Deborah S. Zuercher
231-290 5/29/84
11.268 ac
p. 11-78

LOT 8

Venus Cora M. Zuercher
113-351 11/6/43
117-569 8/26/46
117-571 8/26/46
208-691 2/13/80
44.573 ac

Lester A. Fannie L. Erb
130-218 11/9/54
58.59 ac

LOT 11

Richard A. Ronald H. Potts
156-426 4/26/65
21.9 ac

Richard A. Ronald H. Potts
169-457 3/7/69
19.51 ac

LOT 7

Lester A. Fannie Erb
120-205 1/27/48
83.246 ac

Raymond J. Esther Miller
160-1 9/29/66
98.438 ac

LOT 12

Eli E. Fannie Kempf
232-285 9/15/86
1186 ac p. 10-401
152 ac

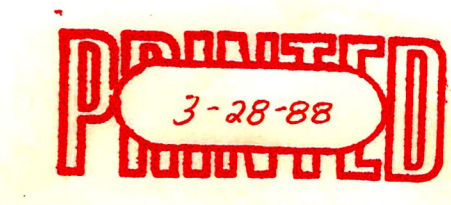
Wayne County National Bank, trustee
232-516 9/25/86 3.15 ac

Wayne County National Bank, trustee
232-516 9/25/86 10.62 ac

- ① Theodore E. Deborah S. Zuercher 231-290 5/29/84 .432 ac p. 11-78
- ② Noah S. Mary E. Miller 235-608 6/16/89 .05 ac

T-8, R-6, 2nd. Qtr.
Lots 7, 8, 9, 10, 11, 12
MECHANIC TWP.

SCALE 1"=200'



MIC-22

LET IT BE KNOWN, THIS MAP HAS BEEN PREPARED AS A REFERENCE GUIDE TO PROPERTY OWNERSHIP. WE BELIEVE THIS INFORMATION TO BE CORRECT AND CURRENT. HOWEVER, IT IS NOT INTENDED FOR ANY LEGAL USE, WHETHER IT BE IN SALES, TRANSFERS, TRADES, LEASES OF ANY TYPE, ETC., AND DO NOT ACCEPT RESPONSIBILITY FOR ERRORS OR OMISSIONS CONTAINED HEREIN.