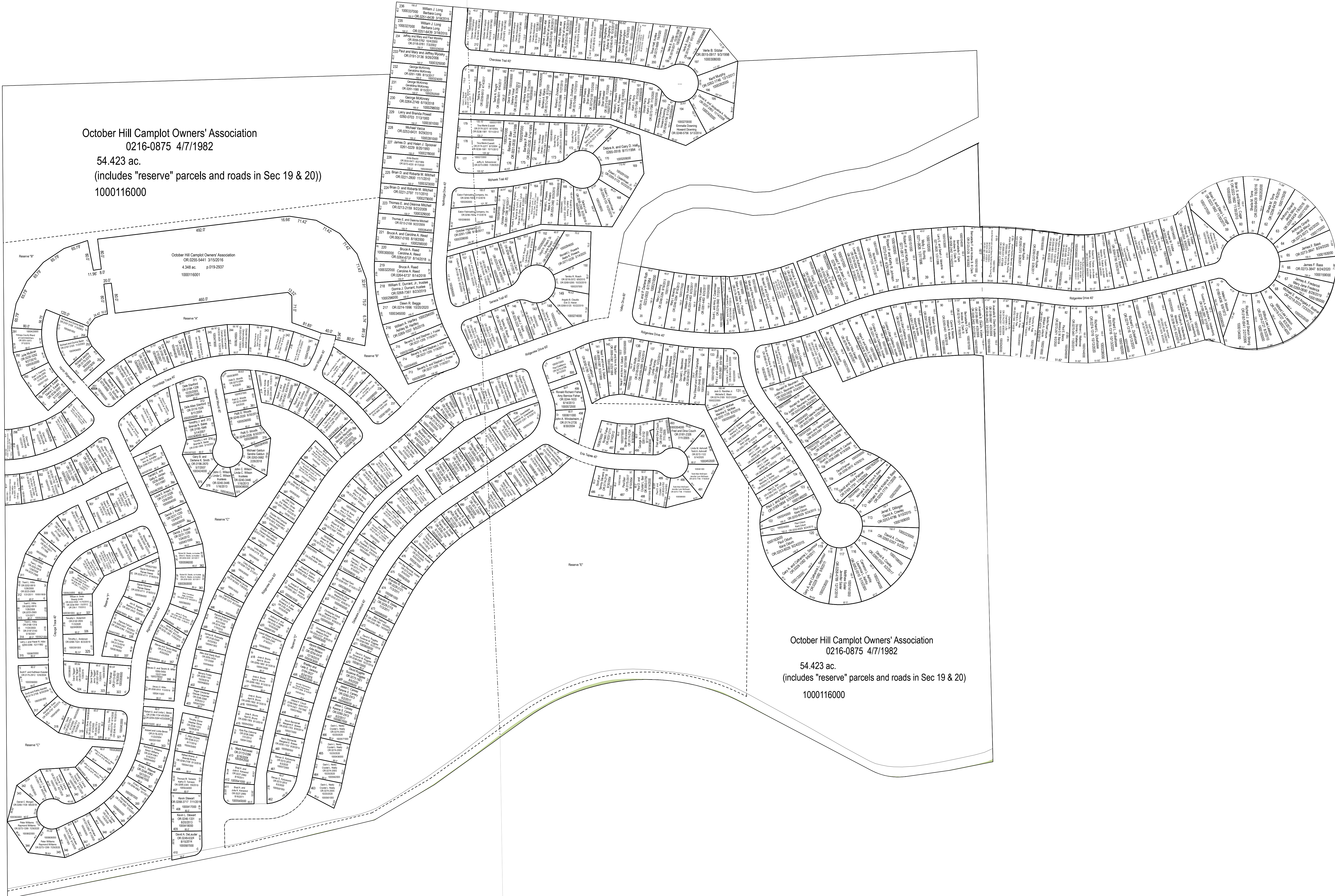


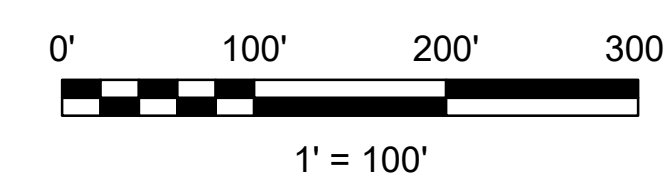
KX-26

October Hill Camplot Owners' Association
0216-0875 4/7/1982
54.423 ac.
(includes "reserve" parcels and roads in Sec 19 & 20)
1000116000



October Hill Camplot Owners' Association
0216-0875 4/7/1982
54.423 ac.
(includes "reserve" parcels and roads in Sec 19 & 20)
1000116000

KX-28



LET IT BE KNOWN, THIS MAP HAS BEEN PREPARED AS A REFERENCE GUIDE TO PROPERTY OWNERSHIP. WE BELIEVE THIS INFORMATION TO BE CORRECT AND CURRENT, HOWEVER IT IS NOT INTENDED FOR ANY LEGAL USE, WHETHER IT BE SALES, TRANSFERS, TRADES, LEASES OF ANY TYPE, ETC. AND DO NOT ACCEPT RESPONSIBILITY FOR ERRORS OF ANY NATURE OR OMISSIONS CONTAINED HEREIN.

S.F.T.
new survey required
for next transfer

Last Revision: 1/4/2021

October Hill and
Wally Highland
Part Sec. 19 & 20, T-19, R-15
Knox Twp.
Holmes County, Ohio

KX-28A