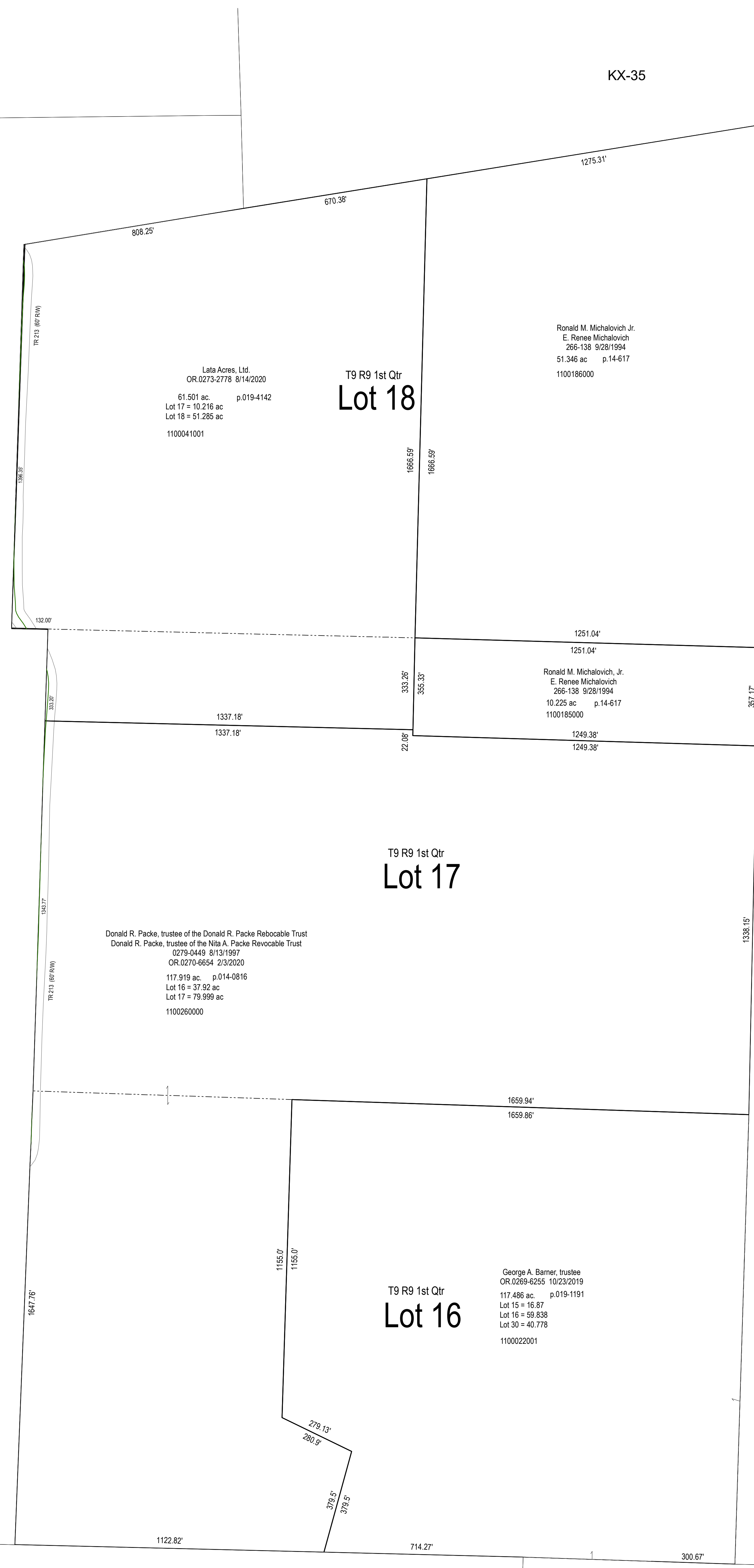


KX-34

KX-35



Lata Acres, Ltd.
 OR.0273-2778 8/14/2020
 p.019-4142
 Lot 17 = 10.216 ac
 Lot 18 = 51.285 ac
 1100041001

T9 R9 1st Qtr
Lot 18

Ronald M. Michalovich Jr.
 E. Renee Michalovich
 266-138 9/28/1994
 51.346 ac p.14-617
 1100186000

Donald R. Packe, trustee of the Donald R. Packe Revocable Trust
 Donald R. Packe, trustee of the Nita A. Packe Revocable Trust
 0279-0449 8/13/1997
 OR.0270-6654 2/3/2020
 p.014-0816
 Lot 16 = 37.92 ac
 Lot 17 = 79.999 ac
 1100260000

T9 R9 1st Qtr
Lot 17

Ronald M. Michalovich Jr.
 E. Renee Michalovich
 266-138 9/28/1994
 10.225 ac p.14-617
 1100185000

T9 R9 1st Qtr
Lot 16

George A. Bamer, trustee
 OR.0269-6255 10/23/2019
 p.019-1191
 Lot 15 = 16.87
 Lot 16 = 59.838
 Lot 30 = 40.778
 1100022001

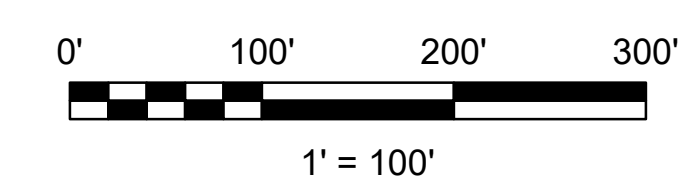
KX-12

KX-18

KX-17

KX-11

KX-16



LET IT BE KNOWN, THIS MAP HAS BEEN PREPARED AS A REFERENCE GUIDE TO PROPERTY OWNERSHIP. WE BELIEVE THIS INFORMATION TO BE CORRECT AND CURRENT. HOWEVER, IT IS NOT INTENDED FOR ANY LEGAL USE, WHETHER IT BE SALES, TRANSFERS, TRADES, LEASES OF ANY TYPE, ETC. AND DO NOT ACCEPT RESPONSIBILITY FOR ERRORS OF ANY NATURE OR OMISSIONS CONTAINED HEREIN.

S.F.T.
 new survey required for next transfer

Last Revision: 1/4/2021



Lots 16, 17 & 18
1st Qtr., T-9, R-9
Knox Twp.
Holmes County, Ohio

KX-13