

KX-02

KX-06

KX-10

KX-01

KX-09

R-05

R-10

R-15

J. Donald Stitzlein  
Patricia A. Stitzlein, co-trustees  
OR 195-1351 3/7/2007  
p. 18 ac  
1100521000

Shawn A. Young  
262-513 12/1/1993  
74.802 ac  
1100530000

Shawn A. Young  
OR 147 12/31/1997  
3.099 ac total  
sec 28 = 2.528 ac  
sec 29 = 0.571 ac  
p. 16-620

Christopher Drake  
Gina M. Drake  
OR 227-2133 8/2/2011  
1315.0' 4.98 ac  
p. 19-1120  
1100298000

Shawn A. Young  
262-513 12/1/1993  
35.0 ac  
1100528000

Christopher Drake  
Gina M. Drake  
OR 227-2133 8/2/2011  
40.0 ac  
1100295000

Brenda Doty  
OR 225-1187 4/19/2011  
40.0 ac  
1100034000

Shawn A. Young  
262-513 12/1/1993  
15.0 ac  
1100528001

Mildred I. Gandee, trustee  
Janis L. Donley and Bethany S. Dye successor co-trustees of the Mildred I. Gandee Trust  
0271-0528 12/29/1995  
OR 0259-7078 4/24/2017  
40.0 ac  
1100133001

Mildred I. Gandee, trustee  
Dye successor co-trustees of the Mildred I. Gandee Trust  
0271-0528 12/29/1995  
OR 0259-7078 4/24/2017  
40.0 ac  
1100134000

J. Donald Stitzlein and  
Patricia A. Stitzlein as co-trustees  
OR 233-1736 4/16/2012  
25.0 ac  
1100442000

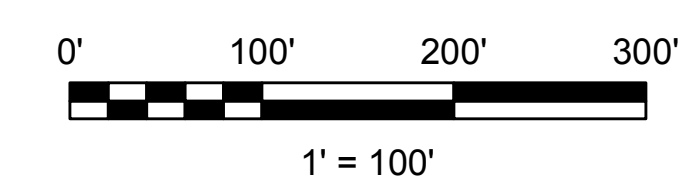
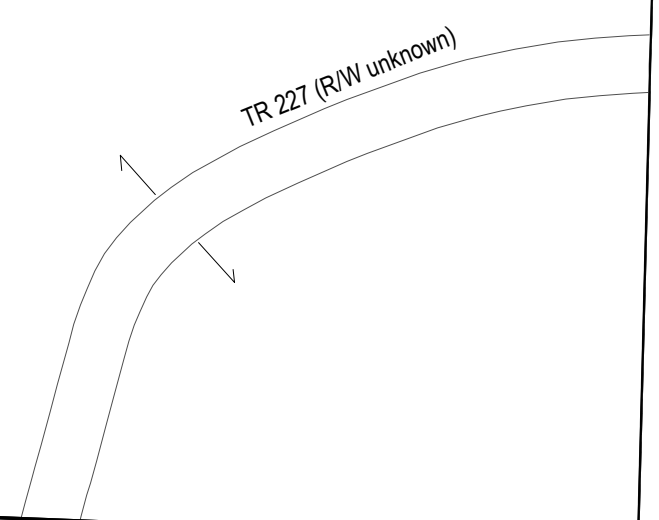
Mildred I. Gandee, trustee  
Janis L. Donley and Bethany S. Dye successor co-trustees of the Mildred I. Gandee Trust  
0271-0528 12/29/1995  
OR 0259-7078 4/24/2017  
80.0 ac  
1100133000

Mildred I. Gandee, trustee  
Dye successor co-trustees of the Mildred I. Gandee Trust  
0271-0528 12/29/1995  
OR 0259-7078 4/24/2017  
80.0 ac  
1100132000

J. Donald Stitzlein  
Patricia A. Stitzlein  
co-trustees  
OR 195-1351 3/7/2007  
p. 4-201  
1100456000

J. Donald Stitzlein  
Patricia A. Stitzlein, co-trustees  
OR 195-1351 3/7/2007  
143.54 ac  
1100455000

T9 R9  
**Sec 24**



LET IT BE KNOWN, THIS MAP HAS BEEN PREPARED AS A REFERENCE GUIDE TO PROPERTY OWNERSHIP. WE BELIEVE THIS INFORMATION TO BE CORRECT AND CURRENT. HOWEVER, IT IS NOT INTENDED FOR ANY LEGAL USE, WHETHER IT BE SALES, TRANSFERS, TRADES, LEASES OF ANY TYPE, ETC. AND DO NOT ACCEPT RESPONSIBILITY FOR ERRORS OF ANY NATURE OR OMISSIONS CONTAINED HEREIN.

S.F.T.  
new survey required  
for next transfer

Last Revision: 1/2/2018



**Sec. 24, T-9, R-9**  
**Knox Twp.**  
**Holmes County, Ohio**

**KX-05**