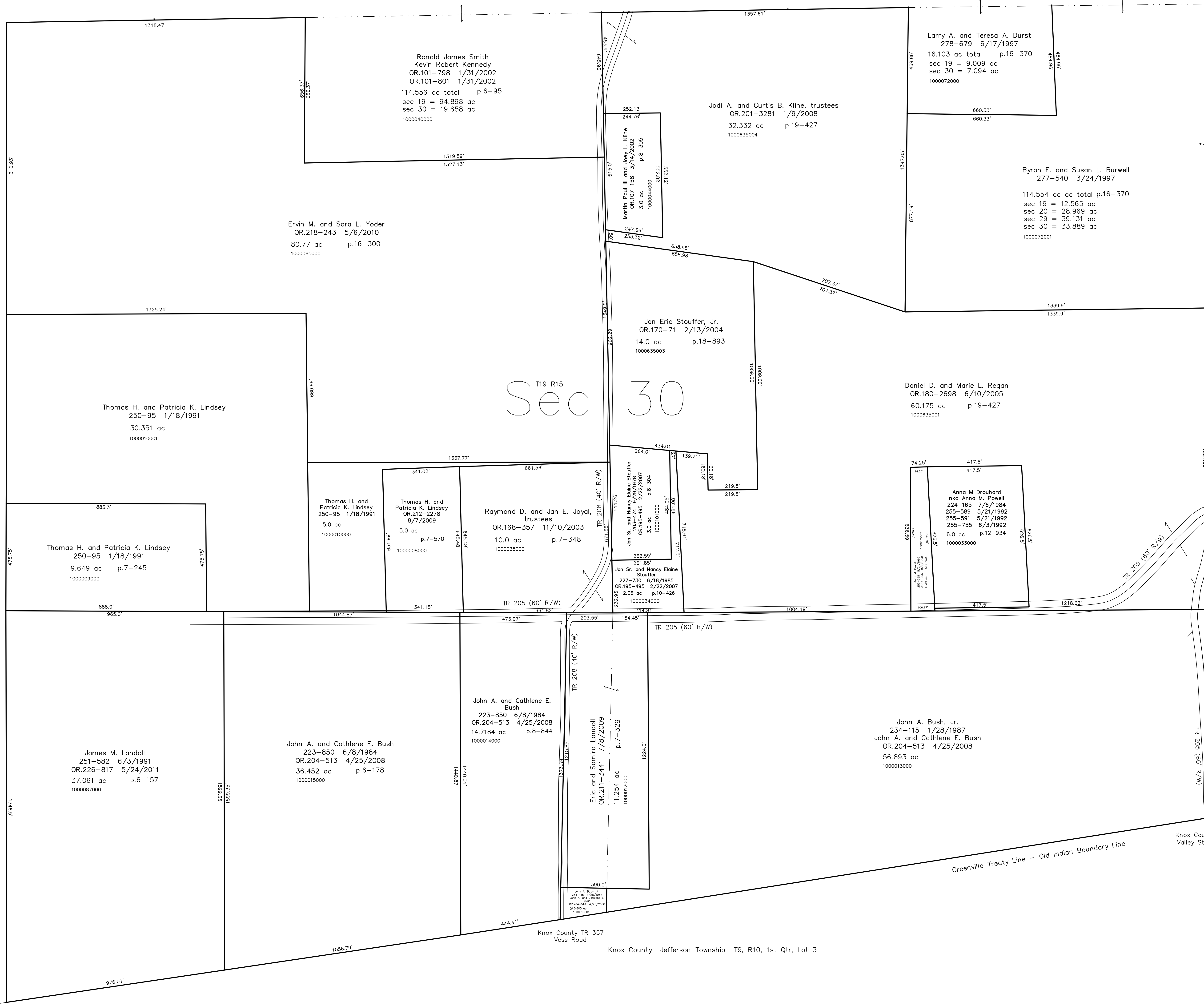


T19, R15, Sec.19 KX-26

Ashland County Hanover Township T19, R16, Sec.25

T19, R15, Sec.20 KX-28



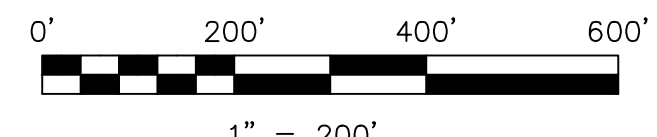
# T19 R15 Sec 30

Ashland County Hanover Township  
T19, R16, Sec.25

Knox County Jefferson Township  
T9, R10, 1st Qtr, Lot 3

nw corner ne qtr, se qtr, T9, R10, Sec 13  
Knox County Jefferson Township

Last Revision: 5/24/2011  
**T-19, R-15, Sec. 30**  
**Knox Twp.**  
**Holmes County, Ohio**



LET IT BE KNOWN, THIS MAP HAS BEEN PREPARED AS A REFERENCE GUIDE TO PROPERTY OWNERSHIP. WE BELIEVE THIS INFORMATION TO BE CORRECT AND CURRENT. HOWEVER IT IS NOT INTENDED FOR ANY LEGAL USE, WHETHER IT BE IN SALES, TRANSFERS, TRADES, LEASES OF ANY TYPE, ETC., AND DO NOT ACCEPT RESPONSIBILITY FOR ERRORS OF ANY NATURE OR OMISSIONS CONTAINED HEREIN.

new survey required  
for next transfer

# KX-25