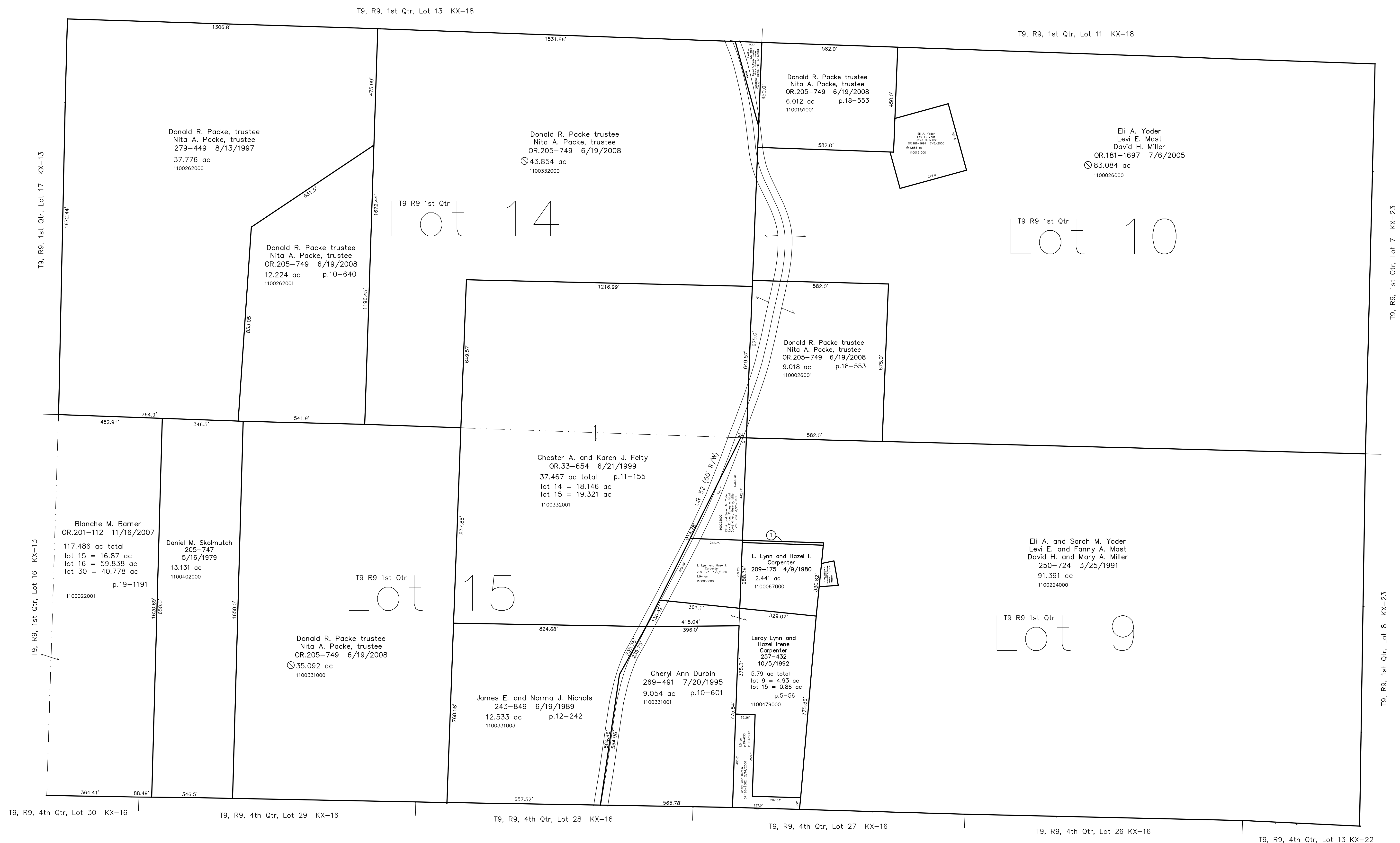


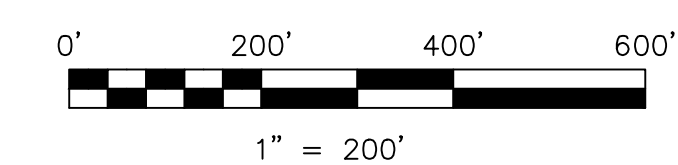
1100067001 Eli A. and Sarah M. Yoder
Levi E. and Fanny A. Mast
David H. and Mary A. Miller
OR 30-238 4/26/1999
0.079 ac p.17-76



Last Revision: 6/19/2008

**T-9, R-9, 1st. Qtr.
Lots 9,10,14,15
Knox Twp.
Holmes County, Ohio**

KX-17



LET IT BE KNOWN, THIS MAP HAS BEEN PREPARED AS A REFERENCE GUIDE TO PROPERTY OWNERSHIP. WE BELIEVE THIS INFORMATION TO BE CORRECT AND CURRENT. HOWEVER IT IS NOT INTENDED FOR ANY LEGAL USE, WHETHER IT BE IN SALES, TRANSFERS, TRADES, LEASES OF ANY TYPE, ETC., AND DO NOT ACCEPT RESPONSIBILITY FOR ERRORS OF ANY NATURE OR OMISSIONS CONTAINED HEREIN.

new survey required
for next transfer