

Nelson E. Abrahamsen, Jr.
246-59 1/29/1990
60.0 ac
1100001000

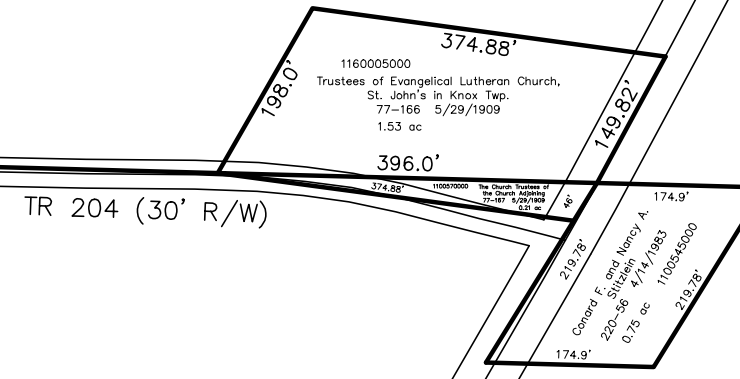
Conard F. and Nancy A. Stitzlein
197-35 1/13/1977
113.75 ac
1100436000

Conard F. and Nancy A. Stitzlein
197-35 1/13/1977
80.0 ac
1100437000

Conard and Nancy Stitzlein
203-522 10/5/1978
80.0 ac
1100440000

Nelson E. Abrahamsen, Jr.
246-59 1/29/1990
Ben E. Strobel, as trustee
OR.206-472 7/23/2008
60.0 ac
1100469000

T9 R9 Sec 16



Conard F. and Nancy A. Stitzlein
193-35 1/26/1976
228-589 8/30/1985
200.687 ac
1100435000

Shawn A. Young
193-296 3/2/1976
262-513 12/1/1993
40.0 ac
1100527000

Gary and Carolyn McKelvey
266-369 10/19/1994
OR.167-1282 10/15/2003
Virginia G. Cary, trustee
OR.156-596 7/15/2003
40.0 ac
1100073000

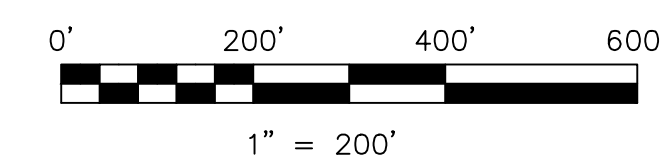
Jahn M. Young
176-715 5/10/1971
42.277 ac p.5-81
1100533000

J. Donald and Patricia A. Stitzlein,
co-trustees
OR.195-1351 3/7/2007
62.75 ac
1100459000

J. Donald and Patricia A. Stitzlein,
co-trustees
OR.195-1351 3/7/2007
10.0 ac
1100461000

Last Revision: 5/7/2009

T-9, R-9, Sec. 16
Knox Twp.
Holmes County, Ohio



LET IT BE KNOWN, THIS MAP HAS BEEN PREPARED AS A REFERENCE GUIDE TO PROPERTY OWNERSHIP. WE BELIEVE THIS INFORMATION TO BE CORRECT AND CURRENT. HOWEVER IT IS NOT INTENDED FOR ANY LEGAL USE, WHETHER IT BE IN SALES, TRANSFERS, TRADES, LEASES OF ANY TYPE, ETC., AND DO NOT ACCEPT RESPONSIBILITY FOR ERRORS OF ANY NATURE OR OMISSIONS CONTAINED HEREIN.

new survey required for next transfer

KX-02