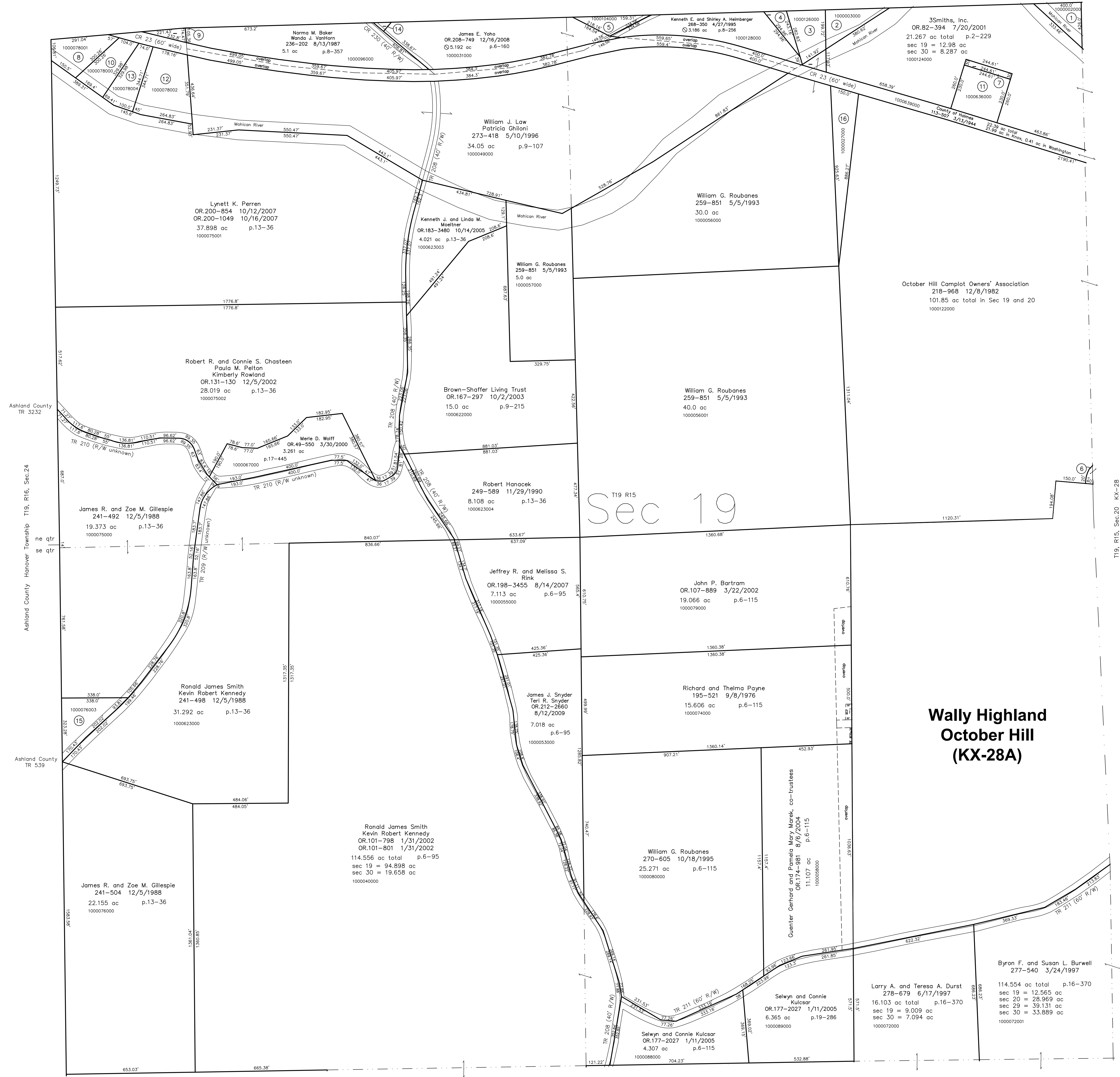
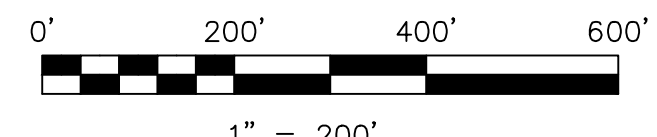


- 100002000 ① Carla J. Gaudy, trustee  
OR.209-1893 3/6/2009  
0.19 ac
- 100003000 ② Carla J. Gaudy, trustee  
OR.209-1893 3/6/2009  
0.15 ac
- 1000126000 ③ Loudonville Canoe Rentals, Inc.  
278-119 5/6/1997  
0.89 ac p.8-116
- 1000125000 ④ Loudonville Canoe Rentals, Inc.  
278-119 5/6/1997  
0.312 ac p.8-214
- 1000104000 ⑤ Carol L. Wilson  
253-288 10/31/1991  
268-166 4/12/1995  
OR.205-686 6/16/2008  
0.477 ac p.8-255
- 1000115000 ⑥ October Hill Camplot Owners' Association  
216-875 4/27/1982  
0.052 ac
- 1000124001 ⑦ 3Smiths, Inc.  
OR.195-888 3/1/2007  
0.168 ac p.12-911
- 1000078001 ⑧ Clement E. and Theresa Sofigon  
278-245 5/13/1997  
1.0 ac p.16-423
- 1000078003 ⑨ Danivan K. Switzer II, trustee  
OR.16-381 9/8/1998  
0.194 ac p.16-423
- 1000078000 ⑩ Robert P. and Carol J. Risch  
OR.207-2103 10/31/2008  
0.945 ac p.19-1405
- 1000636000 ⑪ 3Smiths, Inc.  
OR.195-888 3/1/2007  
1.292 ac p.10-473
- 1000078002 ⑫ Kean Farms, LLC.  
OR.197-3197 6/22/2007  
1.925 ac p.16-423
- 1000078004 ⑬ Earl D. Hartman  
Cathleen M. Callahan-Hartman  
OR.207-2101 10/31/2008  
0.944 ac p.19-1405
- 1000031001 ⑭ James Yoho aka  
James E. Yoho  
OR.208-746 12/16/2008  
0.048 ac p.19-1429
- 1000076003 ⑮ James R. and Zoe M. Gillespie  
241-501 12/5/1988  
1.229 ac p.13-36
- 1000027000 ⑯ William G. Roubanes  
259-851 5/5/1993  
1.5 ac



**Wally Highland  
October Hill  
(KX-28A)**

Last Revision: 8/12/2009  
**T-19, R-15, Sec. 19**  
**Knox Twp.**  
**Holmes County, Ohio**



LET IT BE KNOWN, THIS MAP HAS BEEN PREPARED AS A REFERENCE GUIDE TO PROPERTY OWNERSHIP. WE BELIEVE THIS INFORMATION TO BE CORRECT AND CURRENT. HOWEVER IT IS NOT INTENDED FOR ANY LEGAL USE, WHETHER IT BE IN SALES, TRANSFERS, TRADES, LEASES OF ANY TYPE, ETC., AND DO NOT ACCEPT RESPONSIBILITY FOR ERRORS OF ANY NATURE OR OMISSIONS CONTAINED HEREIN.

new survey required for next transfer

**KX-26**