

Nelson E. Abrahamsen, Jr.  
246-59 1/29/1990  
60.0 ac  
1100001000

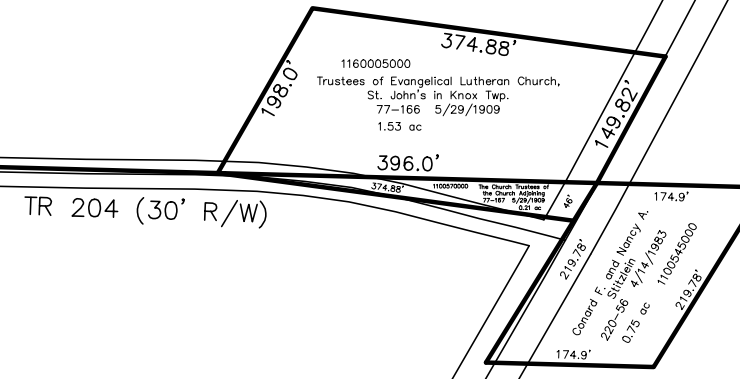
Conard F. and Nancy A. Stitzlein  
197-35 1/13/1977  
113.75 ac  
1100436000

Conard F. and Nancy A. Stitzlein  
197-35 1/13/1977  
80.0 ac  
1100437000

Conard and Nancy Stitzlein  
203-522 10/5/1978  
80.0 ac  
1100440000

Nelson E. Abrahamsen, Jr.  
246-59 1/29/1990  
Ben E. Strobel, as trustee  
OR.206-472 7/23/2008  
60.0 ac  
1100469000

# T9 R9 Sec 16



Conard F. and Nancy A. Stitzlein  
193-35 1/26/1976  
228-589 8/30/1985  
200.687 ac  
1100435000

Shawn A. Young  
193-296 3/2/1976  
262-513 12/1/1993  
40.0 ac  
1100527000

Gary and Carolyn McKelvey  
266-369 10/19/1994  
OR.167-1282 10/15/2003  
Virginia G. Cary, trustee  
OR.156-596 7/15/2003  
40.0 ac  
1100073000

Jahn M. Young  
176-715 5/10/1971  
42.277 ac p.5-81  
1100533000

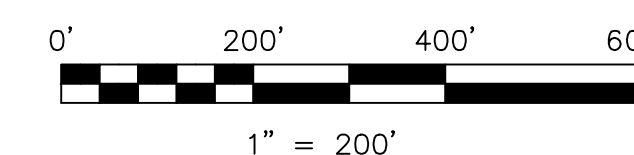
J. Donald and Patricia A. Stitzlein,  
co-trustees  
OR.195-1351 3/7/2007  
62.75 ac  
1100459000

J. Donald and Patricia A. Stitzlein,  
co-trustees  
OR.195-1351 3/7/2007  
10.0 ac  
1100461000



Last Revision: 5/7/2009

**T-9, R-9, Sec. 16**  
**Knox Twp.**  
**Holmes County, Ohio**



LET IT BE KNOWN, THIS MAP HAS BEEN PREPARED AS A REFERENCE GUIDE TO PROPERTY OWNERSHIP. WE BELIEVE THIS INFORMATION TO BE CORRECT AND CURRENT, HOWEVER IT IS NOT INTENDED FOR ANY LEGAL USE, WHETHER IT BE IN SALES, TRANSFERS, TRADES, LEASES OF ANY TYPE, ETC., AND DO NOT ACCEPT RESPONSIBILITY FOR ERRORS OF ANY NATURE OR OMISSIONS CONTAINED HEREIN.

new survey required for next transfer

# KX-02