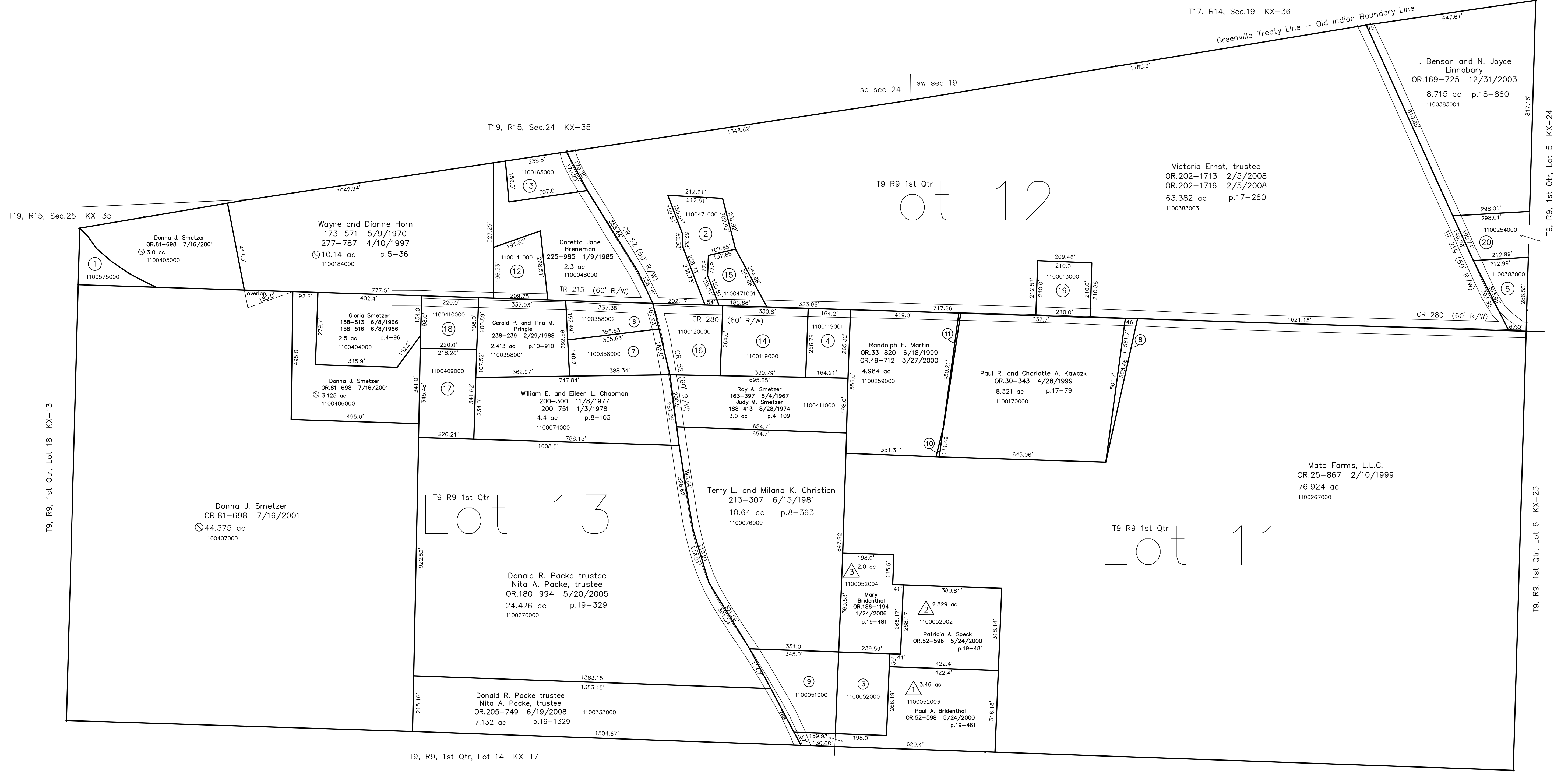
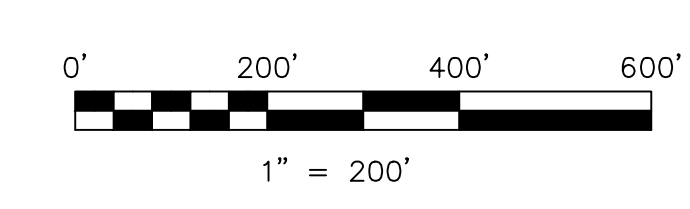


- 1100575000 (1) unknown (Mary E. Cline?)
97-339 8/29/1928
0.5 ac
- 1100471000 (2) Roger L. and Sara A. McClure
OR.173-75 6/11/2004
1.268 ac p.19-869
- 110052000 (3) Mary Bidenthal
OR.186-1190 1/24/2006
1.403 ac
- 110019001 (4) Randy R. Fortune
264-586 5/25/1994
1.003 ac p.14-520
- 1100383000 (5) I. Benson and N. Joyce Linnabary
OR.169-725 12/31/2003
0.903 ac p.17-260
- 1100358002 (6) Douglas V. Pringle
OR.204-2913 5/23/2008
1.002 ac p.17-610
- 1100358000 (7) Willard and Mary C. Huntsberger
OR.200-1471 10/22/2007
1.363 ac p.17-610
- 1100267001 (8) Paul R. and Charlotte A. Kawczk
OR.65-850 1/18/2001
0.301 ac p.17-762
- 110052000 (9) Mary Bidenthal
OR.186-1190 1/24/2006
1.833 ac
- 1100259001 (10) Paul R. and Charlotte A. Kawczk
OR.70-549 3/20/2001
0.016 ac p.17-827
- 1100170001 (11) Randolph E. Martin
OR.72-240 4/5/2001
0.042 ac p.17-846
- 1100141000 (12) Jordan W. Barnett
Nancy M. Christian
OR.167-1030 10/10/2003
1.048 ac p.18-761
- 1100165000 (13) Patty Burke
273-919 6/12/1996
OR.171-3445 4/23/2004
0.998 ac p.19-59
- 110019000 (14) Ralph H. and Carol M. Fortune
143-67 4/25/1960
1.997 ac
- 1100471001 (15) Drexel E. and Lucille A. Hess
OR.172-2204 5/28/2004
0.756 ac p.19-86
- 1100120000 (16) Ralph H. and Carol M. Fortune
143-67 4/25/1960
1.0 ac
- 110049000 (17) Donna J. Smetzer
187-306 5/21/1974
OR.81-698 7/16/2001
1.73 ac p.7-256
- 1100410000 (18) Donna J. Smetzer
158-471 5/31/1966
OR.81-698 7/16/2001
1.0 ac p.4-98
- 110013000 (19) Jacob R. and Nancy Arrholt
209-295 4/22/1980
1.01 ac p.5-44
- 1100254000 (20) I. Benson and N. Joyce Linnabary
OR.125-31 10/10/2002
1.04 ac p.6-168



Coal Bank Subdivision
Plat 19-481 Platted 8/26/2005



LET IT BE KNOWN, THIS MAP HAS BEEN PREPARED AS A REFERENCE GUIDE TO PROPERTY OWNERSHIP. WE BELIEVE THIS INFORMATION TO BE CORRECT AND CURRENT, HOWEVER IT IS NOT INTENDED FOR ANY LEGAL USE, WHETHER IT BE IN SALES, TRANSFERS, TRADES, LEASES OF ANY TYPE, ETC., AND DO NOT ACCEPT RESPONSIBILITY FOR ERRORS OF ANY NATURE OR OMISSIONS CONTAINED HEREIN.

new survey required for next transfer

Last Revision: 6/19/2008
T-9, R-9, 1st. Qtr.
Lots 11,12,13
Knox Twp.
Holmes County, Ohio

KX-18