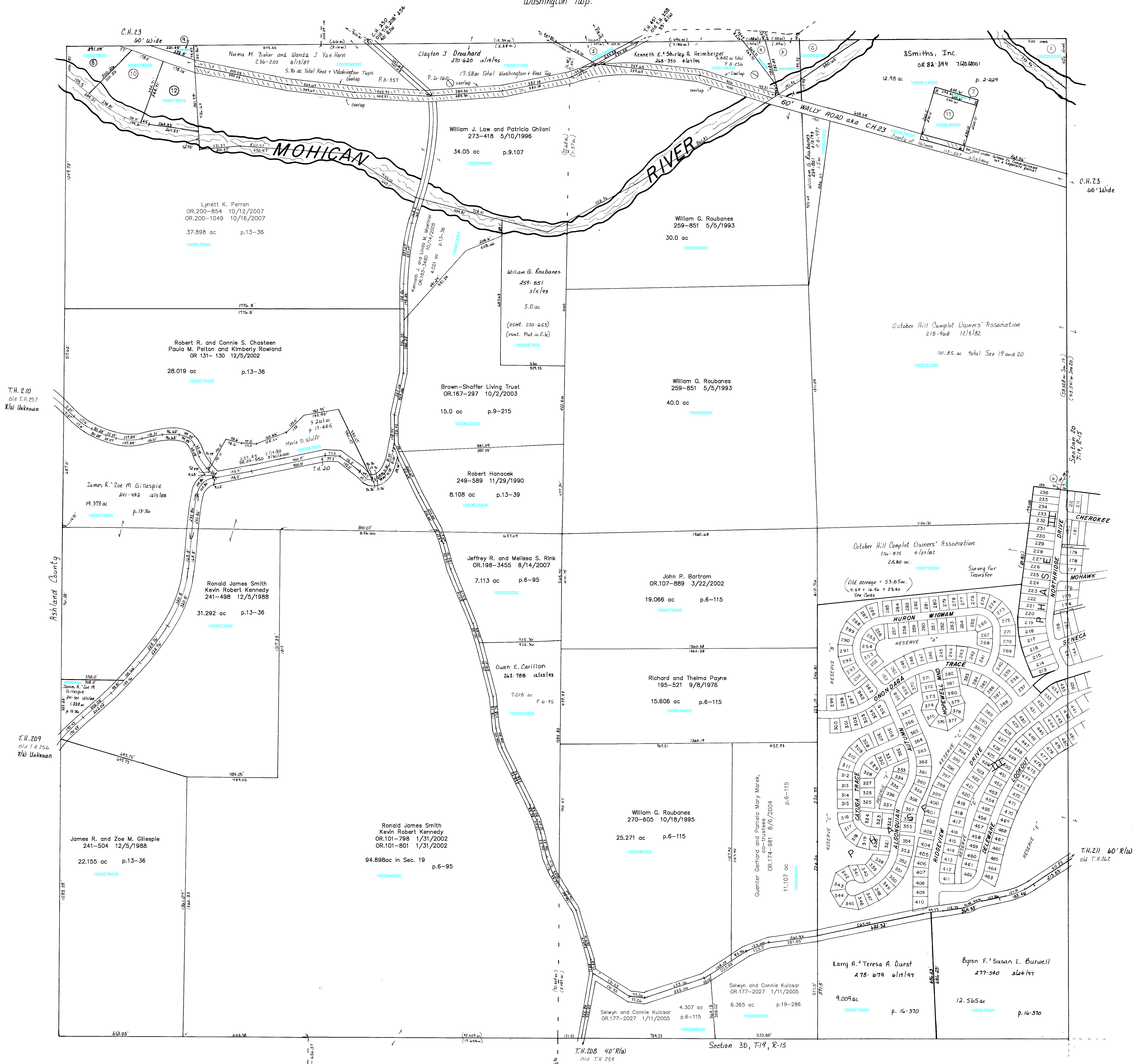
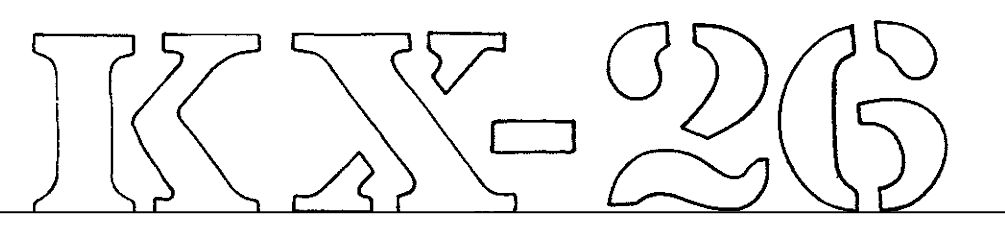


Washington Twp.



100002000	①	BALDNER CARL AND BILLIE B. 168-355 11/7/1968 1.9 ac S.F.T.
100003000	②	BALDNER CARL AND BILLIE B. 168-355 11/7/1968 1.9 ac S.F.T.
1000126000	③	LOUDONVILLE CANOE RENTALS, INC. 278-119 5/6/1997 0.89 ac p.8-116
1000125000	④	LOUDONVILLE CANOE RENTALS, INC. 278-119 5/6/1997 0.312 ac p.8-214
100014000	⑤	WILSON KENNETH L. AND CAROL L. 253-298 10/31/1991 268-166 4/17/1995 0.477 ac p.8-255
1000115000	⑥	OCTOBER HILL CAMPOUT OWNERS' ASSOCIATION 216-875 4/27/1982 0.052 ac
1000124001	⑦	3Smiths, Inc. OR.195-888 3/1/2007 0.188 ac p.12-911
1000078001	⑧	SAFIGAN CLEMENT E. AND THERESA 278-245 5/13/1997 1.0 ac p.16-423
1000078003	⑨	SWITZER DONIVAN K. II TRUSTEE OR.0016-381 9/8/1998 0.194 ac p.16-423
1000078000	⑩	OSBORNE RICKY JAMES AKA RICK OR.0006-162 4/1/1998 OR.0174-2455 8/25/2004 1.889 ac p.16-423
1000636000	⑪	3Smiths, Inc. OR.195-888 3/1/2007 1.292 ac p.10-473
1000078002	⑫	Keon Farms, LLC OR.197-3197 6/22/2007 1.925 ac p.16-423

KNOX TWP.  
T-19, R-15  
Section 19  
SCALE 1" = 200'  
Last Revision: 10/16/2007



LET IT BE KNOWN, THIS MAP HAS BEEN PREPARED AS A REFERENCE GUIDE TO PROPERTY OWNERSHIP. WE BELIEVE THIS INFORMATION TO BE CORRECT AND CURRENT, HOWEVER, IT IS NOT INTENDED FOR ANY CURRENT USE, WHETHER IT BE IN SALES, TRANSFERS, TRADES, LEASES OF ANY TYPE, ETC., AND DO NOT ACCEPT RESPONSIBILITY FOR ERRORS OF ANY NATURE OR OMISSIONS CONTAINED HEREIN.