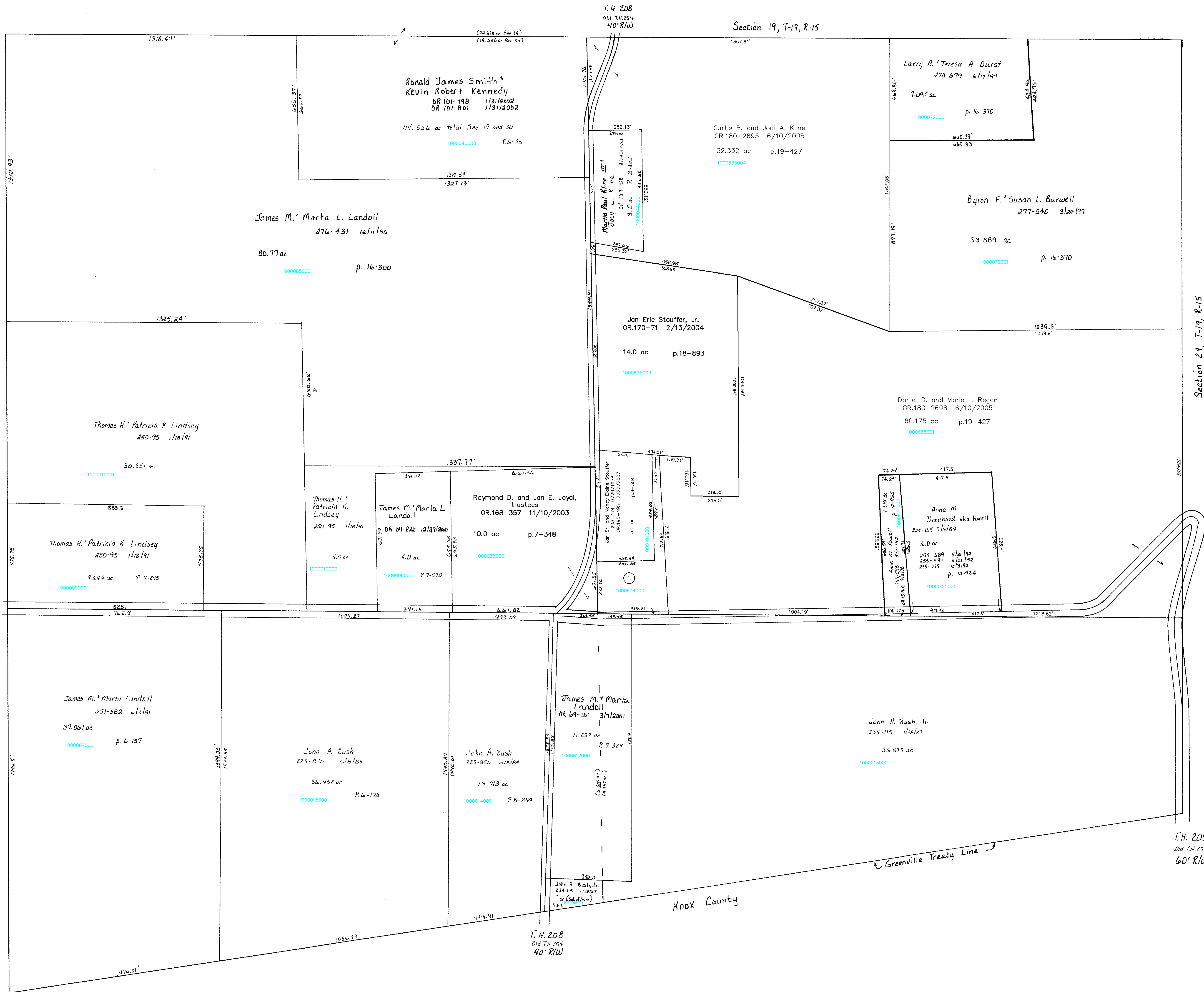


Ashland County

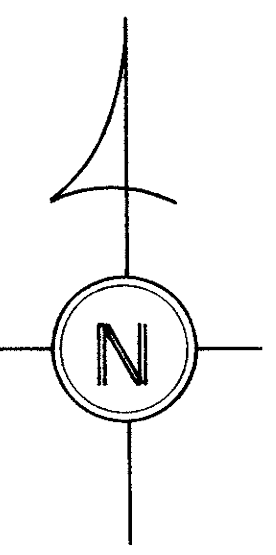
T.H. 205  
Old T.H. 255  
60' R/W



1000634000 (1) Jan Sr. and Nancy Elaine Stouffer  
227-730 6/18/1985  
OR 195-495 2/22/2007  
2.06 ac

Last Revision: 2/22/2007

KNOX TWP.  
T-19, R-15  
Section 30  
SCALE 1"=200'



LET IT BE KNOWN, THIS MAP HAS BEEN PREPARED AS A REFERENCE GUIDE TO PROPERTY OWNERSHIP. WE BELIEVE THIS INFORMATION TO BE CORRECT AND CURRENT. HOWEVER, IT IS NOT INTENDED FOR ANY LEGAL USE, WHETHER IT BE IN SALES, TRANSFERS, TRADES, LEASES OF ANY TYPE, ETC., AND DO NOT ACCEPT RESPONSIBILITY FOR ERRORS OF ANY NATURE OR OMISSIONS CONTAINED HEREIN.

KX-25